

SHOES

that Give Service & Wear



Made in a factory where a poor shoe for women was never constructed. John Kelley is the maker and his reputation has been long established. Our women's department is complete with these shoes in up to date leathers and shapes. Oxfords and pumps are in great demand. Have you bought yours? Let us show you many beautiful styles at prices that will please you. The greatest shoe values are here.

The June White Sale Is Still Continued

20 Per Cent Discount

New Dress Goods

and many are taking advantage of this marked saving opportunity. The prices on all white merchandise is reduced. (Staple muslin and thread excepted.)

On a fine assortment of There are many pretty colors and stylish weaves included in this extra special. They are now one-fifth off.

Stockton

How Thieves Live by Charles Somerville, the celebrated newspaper criminal reporter, is only one of the big features that make the July EVERYBODY'S very much worth while.

There are five other live articles, and SIX STORIES that you can't afford to miss. Get the

JULY EVERYBODY'S
Special display by Patton Bros., Commercial Book Store, Putnam's Drug Store, Adolph's Cigar Store

THE G. A. R. ELECTS OFFICERS

Tacoma, June 23.—Judging from sentiment expressed by the members of the G. A. R. in annual encampment in this city, Seattle will be selected for the next state meeting. No definite date has been reached but a committee has been appointed to select the encampment city. The time has not been set for the committee meeting.

The new monument given to the soldiers' home at Orting was unveiled today with appropriate ceremonies by the veterans. The old soldiers went out to Orting in a body to participate in the program. They will return to Tacoma this evening, and tomorrow will take a trip to Seattle to see the exposition.

SOUTHERN PACIFIC CO.

TIME TABLE
Effective Tuesday, June 22, 1909, at 12:01 A. M.

Northbound.	
No. 16 Oregon Express	5:15 a.m.
No. 18 Cottage Grove Pass	7:07 a.m.
No. 20 Roseburg Pass	8:15 p.m.
No. 14 Portland Express	7:58 a.m.
No. 12 Shasta Limited	7:43 p.m.
Southbound.	
No. 13 San Francisco Ex.	3:31 a.m.
No. 11 Shasta Limited	7:43 p.m.
No. 19 Ashland Passenger	10:36 a.m.
No. 17 Cottage Grove Pass	6:45 p.m.
No. 15 California Express	9:56 p.m.
Northbound.	
No. 226 Way Freight	11:45 a.m.
No. 222 Portland Fast Frt.	9:56 p.m.
Southbound.	
No. 225 Way Freight	11:45 a.m.
No. 221 Portland Fast Frt.	2:43 a.m.
No. 225 will leave Grants Pass in the morning instead of evening and will not carry passengers between Grants Pass and Ashland.	
Nos. 43 and 46 between Woodburn and Crabtree and 51 and 52 between Lebanon and Albany will run daily.	
No. 74 will connect with No. 4 at Sheridan Junction.	
No. 3 will connect with No. 75 at St. Joseph.	

OREGON ELECTRIC RAILWAY

Time Card Effective Nov. 15, 1908.
Leaves For:

Portland and Intermediate, local	6:40 a.m.
Portland-Hillsboro and Intermediate, local	8:05 a.m.
Portland and Intermediate, local	11:15 a.m.
Portland and Intermediate, local	1:40 p.m.
Portland-Tualatin and Hillsboro, limited	3:05 p.m.
Portland-Hillsboro and Intermediate, local	4:00 p.m.
Portland and Intermediate, local	6:20 p.m.
Portland and Intermediate, local	8:40 p.m.
Arrives From:	
Portland and Intermediate, local	8:25 a.m.
Portland-Hillsboro and Intermediate, local	10:00 a.m.
Portland-Hillsboro-Tualatin, limited	10:50 a.m.
Portland and Intermediate, local	1:00 p.m.
Portland-Hillsboro and Intermediate, local	4:00 p.m.
Portland and Intermediate, local	5:45 p.m.
Portland and Intermediate, local	8:20 p.m.
Portland and Intermediate, local	10:40 p.m.

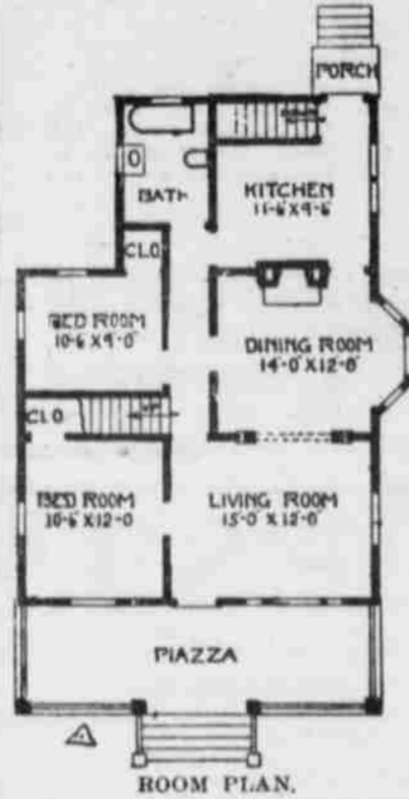
A Homelike Cottage.

Arranged For One or Two Stories and Basement.
Estimated Cost, \$1,700.

Copyright, 1909, by Glenn L. Saxton, Minneapolis, Minn.



PERSPECTIVE VIEW—FROM A PHOTOGRAPH.



In this design I present something which is in great favor on the coast, and, though only the first floor is finished, there is ample room on the second floor for a couple of small rooms. Because of its simplicity it should also prove to be an economical house to build. The rooms are all of generous size. The size over all is 27 feet by 38 feet. The basement is seven feet high and the first floor nine feet. Either a large or small basement can be had, at the option of the builder. The exterior is sided, though either shingles or plaster would look well. Cost to build, exclusive of heating and plumbing, \$1,700.

GLENN L. SAXTON, Architect.

FORD CAR NO 2 IS WINNER

[United Press Leased Wire.]
Seattle, Wash., June 23.—Ford automobile No. 2, with Bert Scott at the wheel, arrived at the gates of the exposition this afternoon at 12:55, and won the great across-the-continent race for the trophy donated by M. Robert Guggenheim. Banked about the entrance to the exposition and along the streets leading through the grounds were thousands of people who had been waiting and watching for hours for a sight of the racers. When the Ford car, dust-covered and battered from its 3000-mile dash across mountain and plain, flashed through the gates of the fair, the spectators broke into prolonged cheers for the plucky driver and his mechanic.

No word has yet been received from the Shawmut car, which last night was seven hours behind the No. 2 Ford. At 10:50 o'clock this forenoon a report was received from Issaquah to the effect that the Shawmut car had passed through there but twelve minutes behind the leader. As nothing has since been heard from the Shawmut since then it is thought that this report was incorrect and that the second racing machine is now laboring through the Cascade mountains. The Ford No. 2 was delayed at Snoqualmie Pass by snow, which is five feet deep in places and it is thought that the Shawmut may be stuck in the drifts.

HOT WAVE SWEEPS OVER CALIFORNIA

[United Press Leased Wire.]
San Francisco, June 23.—This is the hottest day San Francisco has experienced for nearly five years, according to an announcement made from the United States weather bureau. At noon the thermometer registered 82.5 degrees, which shows an increase of 32.5 degrees over the temperature recorded for the same day last year.

The government thermometer registered 101 degrees at noon September 8, 1904. Today the mercury reached the highest point since that time. No prostrations have been announced. All the bay cities report the hottest day of the year. At the Chabot observatory in Oakland the thermometer reached 92 degrees before noon. A steady breeze made the heat bearable and no serious effects were reported.

The hot wave also reached Stockton and other San Joaquin valley points. The noon temperature there was 92 degrees. At Sacramento the official temperature at noon was 90 degrees and the chances seemed good for the mercury to climb to at least 95, which was the maximum yesterday.

This is unusual for so early in the summer, but owing to the lack of humidity in the interior it is not oppressive.

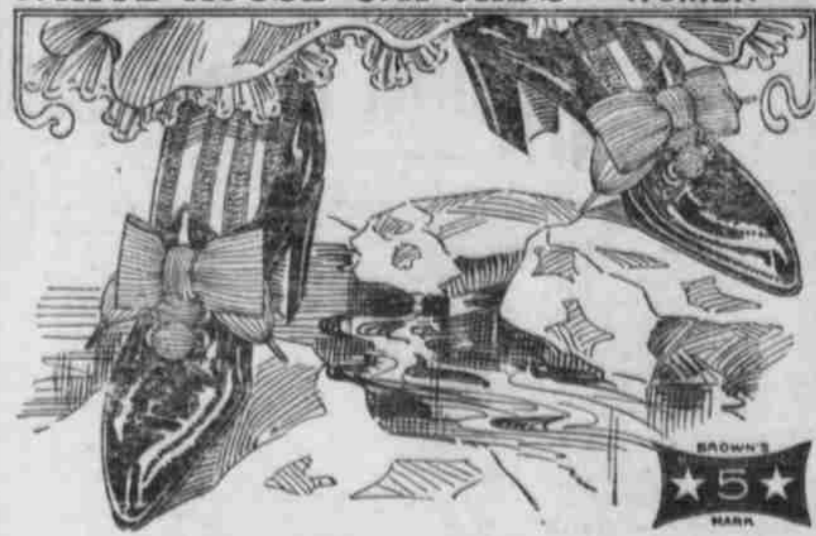
At Los Angeles the mercury went only to the 73 mark at noon. At 5 a. m. the official thermometer marked 59, and the mercury remained there until 9 a. m., when it worked up to 60. A gradual increase followed until noon.

RAISING MILLION DOLLAR CROP OF CANADA THISTLE

Right down a the foot of State street there is a fine crop of Canada thistle maturing. This little crop will furnish seed enough to plant the

AYER'S HAIR VIGOR
Hair falling out? Troubled with dandruff? Want more hair? An elegant dressing?
Ingredients: Sulphur, Glycerin, Quinia, Sodium Chlorid, Caposum, Sage, Alcohol, Water, Perfume.
We believe doctors endorse this formula, or we would not put it up.
Does not Color the Hair

WHITE HOUSE OXFORDS FOR PARTICULAR WOMEN



TAN OXFORDS ARE THE IDEAL

Summer Shoes, and they are especially in high favor with the stylish dressers this season.

LADIES' TAN OXFORDS MISSES TAN OXFORDS
MEN'S TAN OXFORDS

We are showing the popular "RUSSIA CALF" TANS in a great variety of strictly correct lasts, at prices based on the spot cash plan.

Barefoot Sandals for Men, Women and Children

Have you seen our unlined single sole, soft tan shoe for men and boys? Just what the boys need for comfortable, every-day wear.

THE DR. SAWYER Boys' sizes 12 to 2 for \$1.80
CUSHION COMFORT Boys' sizes 3 to 5 \$2.00
WHITE HOUSE SHOE PATENTED JULY 24, 1907
FOR MEN FOR WOMEN Men's sizes 6 to 11 \$2.25



Men's Dr. Sawyer Cushion Comfort Shoes

Like cut in selected vici and high grade kangaroo. Our price \$4.50. You will never know what foot comfort is until you wear a pair.

Barnes' Cash Store E. J. Barnes, Prop.

We now have—
60-inch Heavy White Duck 50c yd.
72-inch Heavy White Duck 60c yd.

whole Willamette valley with the dangerous weed, if left to go to seed. It should be exterminated at once, and there is an ordinance of the city of Salem and a state-law requiring that this shall be done. The thistle is so located that it will be scattered by the high water, and by the passing steamers, and naturally will spread all over the city. The Capital Journal wishes to serve notice on the proper officials, who are mentioned in the city and state laws as being enjoined to extirpate such noxious weeds, in time before the great damage of scattering the seed is done. A few dollars spent now will save an immense damage later on.

Salem Auto Garage

Salem Agency for the Celebrated
MAXWELL
The Machine That Has Made This Garage Famous

If anything happens to your auto on the Fourth or any other day call us up and we will send for the machine and make the necessary repairs. Wouldn't it be a good plan to have us overhaul your car now. Then nothing will happen to it on the Fourth that perfect condition can prevent.



LATEST THINGS IN SUPPLIES
The Gordon Easy-on-Tire Cover.
Glass Front Wind Shields in stock.
Inner Tube Bags and Spark Plugs.

J. F. PRIEHS, Mgr.
STATE STREET, NEAR BOARD OF TRADE
PHONE 386 SALEM, OREGON

Folger's Golden Gate Coffee
Always uniform—our best product—sold in 1 lb., 2 lb., 2 1/2 lb. and 5 lb. cans.
Your grocer will grind it—better if ground at home—not too fine.



Harness and Saddles

We have a large assortment of ladies astride saddles, English bridles, martingales, and blankets, in fact everything that's required in equipping a fine riding outfit. We have the largest and only complete assortment of single and heavy draft harness in the city, and we can save you money. Others pay rent, we collect rent; who can sell the cheapest.

E. S. Lamport Saddlery Co.
If One Our Customer You Will Always Be. 219 N. Com'l St.