

Children Cry for Fletcher's

# CASTORIA

The Kind You Have Always Bought, and which has been in use for over 30 years, has borne the signature of **Chas. H. Fletcher** and has been made under his personal supervision since its infancy. Allow no one to deceive you in this. All Counterfeits, Imitations and "Just-as-good" are but experiments that trifle with and endanger the health of infants and children—Experience against Experiment.

## What is CASTORIA

Castoria is a harmless substitute for Castor Oil, Paregoric, Drops and Soothing Syrups. It is pleasant. It contains neither Opium, Morphine nor other Narcotic substance. Its age is its guarantee. It destroys Worms and allays Feverishness. For more than thirty years it has been in constant use for the relief of Constipation, Flatulency, Wind Colic, all Teething Troubles and Diarrhoea. It regulates the Stomach and Bowels, assimilates the Food, giving healthy and natural sleep, The Children's Panacea—The Mother's Friend.

**GENUINE CASTORIA ALWAYS**

Bears the Signature of

*Chas. H. Fletcher*

The Kind You Have Always Bought

In Use For Over 30 Years

The Centaur Company, 77 Murray Street, New York City.

## 105 Acres

Situated on the Long Tom—a tributary of the Willamette River—running through one of the best sections of Benton County.

## 15 Acres of Alfalfa

The rest is scattering timber, easily cleared, and is all good bottom land. \$80 per acre and very reasonable at that.

## 24 Acres Good Plow Land

at \$80 per acre.

All of the above land is especially adapted to poultry raising and small fruits, especially loganberries. Directly on electric line and within 14 miles of Corvallis, the seat of the Oregon Agricultural college.

For further particulars, address

**L. C. ATHERTON,**

753 Brazee St., PORTLAND, OREGON.

## RED FRONT

Livery & Feed Stables

WILLIS STEWART, Prop.

## First Class Livery Rigs

kept constantly on hand and can be furnished on short notice to parties wishing to drive into the interior. First class

## Hacks and Buggies

Call around and see us. We cater to the :

## Commercial Travelers and Camping Parties

and can furnish rigs and driver on short notice.

**HEPPNER, ORE.**

## BIBLE READING IN SCHOOLS.

When differences of creed become so pronounced as to lead to a petty fight that ends in barring the reading of the Bible from the schools, the time is ripe for a movement for instilling in the people a little more of the broad-minded tolerance of Him whose life history is told in the New Testament. Those people of Portland who oppose the reading of the Bible in the public schools gained a victory, but the spoils they won are only Dead Sea fruit.

Men and women who do not want their children to begin the school day by listening to the reading of a book that because of its intrinsic sweetness and purity has been venerated through centuries of changing beliefs are narrow indeed. The Bible itself is a rebuke to their silly and restricted view. Its teachings are so broad and so fundamental that people of all races and all shades of religious conviction have found comfort and solace in them.

As a literary masterpiece and a textbook on clean and moral living the Bible has never been surpassed. With no small profit it might be read more widely in the schools, even if its reading excluded some other things.—Eugene Register.

## Blue-Stem Wheat Wanted.

THE HEPPNER MILLING COMPANY is in the market for the BEST of the BLUE-STEM wheat for our own use, to make the best quality of flour for Morrow County People, the BEST PEOPLE ON EARTH. See us before selling.

## Will Fence Cemetery.

To parties interested, notice is hereby given that the cemetery known as Junkins Cemetery, located within one half mile of Charles D. Huston's place on Eight Mile, will be fenced, the date being Friday, the 3rd day of October, 1913. A special meeting will be held to provide finances, select a board of directors and attend to such other matters as may pertain to the care of the property.

## For Sale.

A hay baler, practically new and in first class condition. Make good terms. Call on or write. **ARCH COX,** 2t. Heppner, Oregon.

## CAMPAIGN FOR ALFALFA IN THE INLAND EMPIRE

Most Extensive Agricultural Campaign Ever Organized to Cover Pacific Northwest—Prof. P. G. Holden Responds to Invitation of the People to Direct Work.

Plan Unites Five Great Railroad Systems Co-operating With the Spokane Chamber of Commerce, the International Harvester Company of New Jersey, and the Farmers of the Inland Empire.

**Alfalfa Special Train to Cover Region in Washington, Idaho and Oregon—Nearly 225 Miles Square—140 Stops Will Be Made on Railroad Points Where Automobiles Will Take the Speakers into the Country to the Farm Homes Where Lectures Will Be Given—Nearly 700 Alfalfa Lectures to Be Made by Professor Holden and His Staff of Twelve Lecturers—35 Days Consumed in Active Campaign Work—Governors of Three States Endorse the Movement—25,000 Farmers to Hear the Gospel of Alfalfa—People Asked to Co-operate in the Work.**

To accomplish the most in agricultural development we must begin with the man behind the crop; and to render him the most efficient service we must meet him where he lives, study his condition, and aid him according to his needs. Or, in other words, we must carry the message direct to his home.

Such is the plan of the Alfalfa Campaign to be inaugurated in the Inland Empire on the 23rd of September, 1913.

### Holden Responds to Invitation.

At the request of the farmers and business men of this great agricultural region, the Spokane Chamber of Commerce secured the assistance of Prof. P. G. Holden, the most prominent agricultural scientist in the United States, to come to Spokane with his staff of twelve experts to conduct one of the most extensive agricultural campaigns ever carried on in this country. The plan as worked out by Professor Holden, the railroads, and the farmers and business men of the Pacific Northwest is far in advance of anything of a like nature ever attempted for the improvement of commerce and agriculture.

### A Campaign of the People.

It is essentially a campaign of the people assisted by the business men of Spokane, Prof. P. G. Holden, representing the Agricultural Extension Department of the International Harvester Company of New Jersey, and the following railroads: Oregon, Washington Railroad and Navigation Co., Northern Pacific, Great Northern, Spokane & Inland Empire, Union Pacific and North Yakima & Valley Railway.

These great forces have combined and are working in concert to carry the gospel of alfalfa to the homes of the farmers.

### Three Thousand Mile Campaign.

Professor Holden, accompanied by a party of fifty or more college instructors, farmers and business men, will accompany the alfalfa special train and visit one hundred and forty towns of the Inland Empire, commencing on the 24th of September. The party will travel over 3,000 miles of railroad within a period of forty days. The greatness of the campaign can only be conceived when we consider that a region 225 miles from north to south and 190 miles from east to west will be covered. The campaign will open Tuesday, Sept. 23, with a banquet in Spokane, attended by the most prominent men in the Pacific Northwest. The governors of several northwestern states, representative heads of schools and colleges, grange and farmers' union officials, commercial club representatives, bankers and business men, will meet and pledge their support to this great cause.

### Seven Hundred Lectures Will Be Made.

Leaving Spokane, the Holden party will set out to deliver nearly 700 lectures at railroad points and at the homes of the farmers. Professor Holden and his staff of lecturers and assistants will be kept busy from early morning till late at night. At each point on the railroad where stops are scheduled, automobiles will be in readiness to conduct the speakers into the country where meetings will be organized. Not only will lectures be made, but practical demonstrations will be held in the fields relative to the growing of alfalfa, the inoculation and testing of the soil.

### Subjects to Be Discussed.

Men of scientific and practical experience will discuss with the farmers feeds and feeding value of various crops, crops which may be used for silage, feed combinations, and the great value of alfalfa as a general farm crop. Particular emphasis will be placed on the necessity of growing more alfalfa in the Inland Empire. Professor Holden has visited this section before, and has often expressed his desire to conduct a campaign throughout the great wheat country in the Northwest. Upon his last visit here, in speaking of the plan of conducting an alfalfa campaign, he said:

### Some of the Prominent Features.

"The campaign that I should conduct here would be unlike any agricultural work ever carried on in the United States. My plan would be to unite all interests to assist, and the prominent features would be:

"First, the introduction of practically a new crop into the Pacific Northwest.

"Second, going to the homes of the farmers and holding meetings in the field.

"Third, personal contact work and practical demonstration with the farmers upon their own farms.

"Fourth, the use of that most modern conveyance, the automobile.

### Holden Pleased With Plans.

"I am much pleased with the energetic work and the great plans made by the people of Spokane and the farmers and business men of the Inland Empire to put on a campaign which, from every standpoint, is greater and more extensive than any other campaign with which I have been identified. I believe it is the most important agricultural event that has ever taken place in the United States and will surely be far-reaching in its beneficial results. I am glad to be able to assist the people in carrying out the details of such a great movement and I will do all in my power to make it a complete success.

"There is no one thing that will do more to stimulate live stock and dairy interests and bring about diversified farming than the introduction of alfalfa upon the farms of the Inland Empire."

### History of Other Campaigns.

In the past year Professor Holden and his competent staff of workers have conducted thirteen different campaigns throughout the corn belt states and in the south. Many of these campaigns were carried on by means of automobiles only, but the same plan of going to the homes of the people has always been a prominent feature in his work. At one meeting in Ohio upon the farm of Joseph E. Wing, near Mechanicsburg, nearly 4,000 people gathered from all parts of Ohio and adjoining states to learn more about alfalfa. At this great meeting the Ohio Alfalfa Growers' association was formed. Over 300 automobiles made up the alfalfa train. It was recorded as the greatest agricultural assemblage in the history of Ohio. In addition to this meeting campaigns have been conducted in several counties in Michigan, Illinois, Iowa, Mississippi and Alabama. In every case work was carried on by the people in co-operation with various agencies in the different communities. Following out this plan, the expense to the people was very small and the work was effectively done.

### The Follow-Up Man to Check Results.

But this is not all. Whenever the farmers of any community are interested in growing alfalfa, when possible a follow-up man, thorough in his knowledge of farm conditions, will be sent out to assist them in getting a start. He will live with the farmers and aid them in solving the problems at home. He will go from farm to farm upon request and study success and failure.

And this man Holden is coming to assist us. He is about the humblest and hardest-thinking, know-what-he's-about gentleman farmer that ever set out to do one of the biggest and most needed farm profit renovations that has ever been undertaken—and he has accomplished the seemingly impossible. He has revealed the misconceived and misunderstood actual necessities in corn growing and production, and then backed it up with the proof positive by going into the fields and taking it off the stalks.

And Holden is coming to the Inland Empire. The farmers and business men will be glad to see him, for his message will be worth while. It will be from the heart as well as from the shoulder, in plain words and in a plain way.



[These articles and illustrations must not be reprinted without special permission.]

### A RESUME ON ROOSTS.

Poultry house furniture should be cheap, simple, take up little room, just fit the flock and be movable for quick cleaning and transfer.

Roosts should have these characteristics. We present two for inspection:

The first shows a set with dropping boards nailed up in a corner. This roost is too heavy, costly, it cannot be moved for cleaning and red mites or ticks will hide and breed behind it like bedbugs in the cracks of a bughouse building, and if these poultry pests once get a hold a continuous fight must be kept up and often the roost be torn out to get at them. Same with stationary nests.

The second is a cheap, simple affair made of trestles, slats and a low platform.

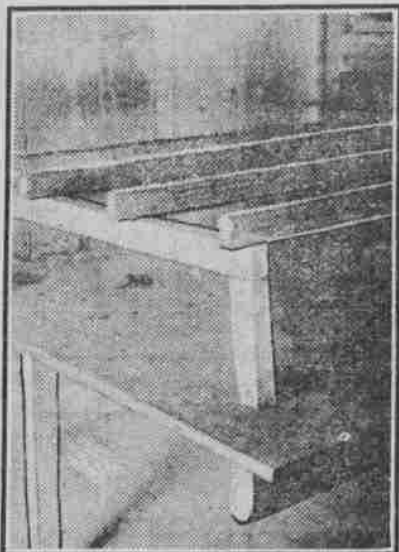


Photo by C. M. Barnitz.

### A HEAVY STATIONARY ROOST.

form, low down for big breeds. Additional trestles may be used to raise the dropping boards off of floor for lighter breeds, and thus the only floor space occupied will be by toes of trestles.

This roost does not touch the wall, may be taken down and out for cleaning in a few minutes, is transferable and may be moved to the windows or set up in the yard in hot weather.

Thus far we have had no mites nor ticks to bother our poultry at River-



Photo by C. M. Barnitz.

### OUR FAVORITE ROOST.

We ascribe this to watchfulness and roosts and nests that are simple and easy to keep clean.

Much of poultry vigor and poultry profit are lost through the ravages of insect pests, and the poultryman who neglects to use every precaution against these destroyers need not expect full success.

### DON'TS.

Don't try to raise poultry in town without a fence or your neighbors will quickly take offense.

Don't work with one eye on the clock and the other on the boss. You'll get caught in the cogs and go to the dogs.

Don't bite off more chicklets than you can chew. Better hatch a reasonable number and raise them than to hatch a lot and raise them not.

Don't forget that every egg that doesn't hatch and every chick that dies is so much off the profit. The financial finale depends on the detail.

Don't over the first hatches go crazy and over the others get lazy. Be enthusiastic, optimistic and industrious all the way through in what you do and providence will favor you.

Don't waste time arguing about breeds and methods. If you're sure you're right then go ahead, but don't be a bullhead.

Don't expect your wife to make much on mongrel hens. Thoroughbred strains for beauty and gains.

Don't sell preserved eggs for fresh. Some customer slick will see through your trick you'll be jerked up quick and then what a shame for a few pennies with you've lost your good name.

### TURKEYS AT SHOWS.

It is often wondered why more turkeys are not seen at exhibitions, but there are reasons.

Turkeys are range birds, and the close confinement at shows is very hard on them.

In many cases they refuse to eat and they are so difficult to cage and handle that many shows offer no prizes and refuse to receive them.

Beside most turkey raisers refuse to raise turkeys to comply with show requirements, especially in regard to feather markings and weights as demanded by the American Poultry association, whose rules govern so many shows and fairs.

A brown wing feather, a primary with less than half the white bars, a single white feather, a brown feather in tail coverts, should not disqualify a fine Bronze.

Nor should one slate feather debar a Narragansett, nor a gray quill disqualify.



Photo by C. M. Barnitz.

### A FANCY SHOW TURKEY.

ify a White Holland, and it's the same with weights.

For instance standard weights for Bronze are: Adult cock, thirty-six pounds; yearling cock, thirty-three pounds; cockerel, twenty-five pounds; hen, twenty pounds; pullet, fifteen pounds.

The market call for turkeys is medium weight and heavyweights are bad breeders. Yet, if a Bronze fancier enters a turkey cock that weighs less than thirty pounds, a yearling under twenty-five, a cockerel less than eighteen, a hen less than fourteen, a pullet under ten pounds weight, they are all disqualified.

Such weight rulings are arbitrary and impractical; such feather requirements are unnatural and unreasonable. Really the proper place to show turkeys is at county fairs, where liberal prizes should be offered, large inclosures made for the fowls and where no foolish arbitrary rules should be allowed.

### FEATHERS AND EGGSHIELDS.

Tennessee is moving in the front line of the turkey procession. Thirty thousand turkeys were shipped on one special for Christmas to Baltimore, Philadelphia and New York, and \$500,000 worth of turks were shipped to other states during the holidays.

Before the parcel post got started a committee from the federated marketing clubs of Pittsburgh had called on 100 farmers' wives of Allegheny county and contracted for their whole output of butter and eggs and left a list of families where they were to mail the produce and guaranteed cash payment.

You never hear of beauty doctors in the country. The farmer's wife and daughter keep their red cheeks and dimples and avoid wrinkles by exercising in the open air. We recommend this way to health and beauty to those ladies who go to Mme. Fix Your Face Up to get their complexion fixed and their curves restored.

When an egg gets hot through, incubation begins. Hot haysnows are good for this, but haysnows eggs aren't good foods to hold trade, and just one busting on a billed shirt at breakfast will bust any New Year's resolution ever made.

Fighting spirit in roosters is a virtue, a sign of strong vitality, but when these same roosters are allowed to fight and butcher each other and thus spoil each other for beauty and breeding it shows a mighty careless poultryman, who doesn't know enough to take care of a good thing when he sees it—that is, if he sees it.

There are so many people who do not estimate what time and money and care it takes to build up fine stock. Such people generally want a ten dollar bird for 50 cents and consider a fancier a thief and a robber for asking more.

Many a hatch of fine eggs has been spoiled by the false register of a defective thermometer. We lost a bunch of extra eggs in this way once, but have never allowed a thermometer to trick us since. Test your thermometer and also set up a thermometer at each corner of the egg tray and thus see whether the incubator egg chamber has an even temperature.

The Ontario department of agriculture, after an exhaustive investigation of fowl tuberculosis, so prevalent in that province, came to the conclusion that it is "intertransmissible between the human or bovine and the avian species to a certain extent," that "the avian bacillus must be considered as not a distinct species, but merely a variety, the differences in character of this organism from the bovine or the human type being due to environment."

*C. M. Barnitz*