

# THE BEND BULLETIN.

VOL. XIV.

BEND, OREGON, WEDNESDAY AFTERNOON, APRIL 26, 1916.

NO. 8.

## SECOND BIG MILL STARTS OPERATION

### Brooks-Scanlon Plant Now Busy Sawing

### RUNNING ONE DAILY SHIFT

### Will Employ 250 Men in All of the Departments — Box Factory Machinery Ordered—Every Possible Part of Log is Manufactured.

The second of the big saw mills to which Bend has looked forward for so many years, the mill of the Brooks-Scanlon Lumber Company, began operation on Saturday, and has been running a daily 10 hour shift since then without interruption. Friday afternoon for the first time the machinery of the mill was "turned over." After running for several hours, while parts were oiled and minor adjustments made a few logs were hauled up from the river and put through the saws. Everything having been found to run smoothly sawing in earnest began on Saturday.

Employing, when all departments are in full operation, some 250 men, the Brooks-Scanlon plant is a big addition to the industries of Bend, and with other local institutions insures the position of the town for years to come as the lumber milling center of Central Oregon.

Comparisons Possible. In various ways and methods of operation the new plant differs from other local mills, thereby affording an interesting comparison between different systems in the same industry. In the logging, for instance, the slip tongue high wheel system is in use, while the roll-off system has been installed to place the sawed lumber on the wagons to haul into the yard.

At present the company has built about five miles of main line logging road and an equal length of spur track. This is expected to be sufficient for one year of cutting. Twenty eight logging cars and one standard engine are in use bringing logs down to the river.

In the woods a McGiffert loader is used and at the unloading dock on the river, an unloading hoist operated by an electric motor will be installed. The motor for this hoist arrived recently. One hundred and fifty men are employed in the logging.

### MILL IS FAST.

All of the saw mill machinery comes from the Diamond Iron Works, of Minneapolis, with the single exception of the set works on the carriages, which are furnished by Flier & Stowell, of Milwaukee. The log carriages have shot gun feed, making fast operation possible, and about 150,000 feet of lumber will be cut in a 10 hour shift.

Everything possible is done in the mill to consume the waste from the first cutting. As much as possible of the material from the big bands will be made into lath, of which it is expected to turn out 35,000 a day. In the lath mill there will be horizontal pony resaw with which boards will be cut from the slabs too short for lath. Other wastes will go into fuel wood, provision being made to cut four foot slabs to 16 inch lengths or to load the four foot wood directly into cars.

Beyond the mill the equipment consists of four Grand Rapids dry kilns, dressed lumber shed, planer and box factory. Work on the box factory which will turn out from 20,000 to 25,000 feet of box shooks a day, is about to begin. The dry kiln will be in use shortly and the other buildings are completed. About 25 per cent of the cut will go through the kilns.

### Power is Furnished.

Power for the operation of the planer and the box factory will be furnished by the Bend Water Light & Power Co. Power for the mill and steam for the dry kilns is supplied from the mill power plant, consisting of two Colby combination boilers which have together a capacity equal to about five boilers of the type ordinarily used in a saw mill. The engine is a 25x42 Allis-Corliss. The mill will be sprinklered

(Continued on last page.)

## EQUIPMENT ADDED TO MEET RAPID GROWTH IN BUSINESS

### B. W. L. & P. Co. Makes Improvement in Plant—Two of Four Units Will be Complete by June 15.

One 500 horse power water turbine, and one 250 kilowatt generator to meet the near future demands for electrical power in Bend will be in operation at the Bend Water Light & Power Company's power house by June 15. The turbine has arrived and is being installed this week. The generator will leave Schenectady, New York, about May 15. In addition to this equipment the 10 panel switchboard, which will handle the power of the plant under its four unit capacity when complete, will also be put in at the time the generator is installed.

When the new turbine and generator are in operation two of the four units will be completed, and the new plant purchased from Steidl & Tweet will provide 1,500 electrical horsepower for Bend and vicinity.

With the unprecedented growth in business in the last four months, which, according to manager T. H. Foley, has exceeded the business of any previous 12 months the additions to the plant have become imperative. The company has made a large amount of extensions to its city lines including service in Boulevard Addition, Aubrey Heights, Lytle and Riverside Additions, Stats addition and Mill addition. Many new connections have also been made in parts of town already served by the company.

In the near future the Bend Water Light & Power Company will supply 500 electrical horsepower to the Brooks-Scanlon Lumber Company for the operation of its auxiliary plants including the planer and box factory.

## BUYS ON BOND STREET

### F. O'Laughlin Will Soon Erect Modern Brick Building.

F. O'Laughlin of Crosby, North Dakota, this week purchased two lots on Bond street between Oregon and Minnesota streets for which he paid \$9,000. Mr. O'Laughlin purchased one lot of 25 foot frontage from A. G. Jones and one of 50 foot frontage from Oliver Thorbjornson.

In the near future Mr. O'Laughlin expects to erect a modern two story brick building on one of the lots he has purchased.

## HUFFMAN IS UNASSUMING

### Builder of Brooks-Scanlon Mill is Self-Effacing—Weidlich His Associate.

Quiet, unassuming, almost self-effacing, is W. A. Huffman, the builder of the Brooks-Scanlon mill which began operation so smoothly on Saturday. If it were left to him you would never know he had any part in the work, but officials of the company are more than ready to tell of his successes and give him full measure of praise for the results he has produced here.

Mr. Huffman is a designer and builder of saw mills, having been trained in the employ of W. A. Wilkinson, of Minneapolis, in his day the best known saw mill builder in the country. He has worked for the Brooks-Scanlon company before, having been head mill wright on the construction of the company's mill at Scanlon 15 years ago.

Since that time he has been connected with the building of many mills, including the following: George Palmer Lumber Co., of La Grande, Oregon; Somers Lumber Co., Somers, Montana; Potlach Lumber Co., Potlach, Idaho; Blackwell Lumber Co., Spirit Lake, Idaho; Craig Mountain Lumber Co., Winchester, Idaho.

With Mr. Huffman on the local work has been H. W. Weidlich, of Minneapolis, described as "the king of saw mill draughtsmen." Mr. Weidlich designed the big Weyerhaeuser mill at Everett, Wash.

## BAND CONCERTS BEGIN SOON

The summer band concerts will begin soon after May 1, according to Leader Ashley Forrest. He would like very much to have a full attendance next Tuesday evening as there is important business to be considered and all members of the band are requested to come out.

- ◆◆◆◆◆
- ◆ DIMENSIONS OF THE ◆
- ◆ BROOKS-SCANLON BUILDINGS ◆
- ◆ Saw Mill, 54x160. ◆
- ◆ Lath Mill, 32x80. ◆
- ◆ Sorting Shed, 32x240. ◆
- ◆ Dressed Lumber Shed, 98x240. ◆
- ◆ Planer Shed 50x120. ◆
- ◆ Box Factory, 80x120. ◆
- ◆ Power Plant, 49x84. ◆
- ◆ Machine and blacksmith shop. ◆
- ◆ Round House 36x112. ◆
- ◆ Barn, 34x147. ◆
- ◆ Burner, Diameter 20 feet, height ◆
- ◆ 26 feet. ◆
- ◆ Stack, 165 feet high, or with ◆
- ◆ base and screen, 195 feet. ◆
- ◆◆◆◆◆

## BUILDER TALKS OF RAILROAD

### R. E. STRAHORN HERE ON SATURDAY

### In Talk Before Commercial Club President of O. C. & E. Points Out Bend's Place in Undertaking—Urges That Town Save Trees.

In a talk which brought him closer than ever to the people of Bend Robert E. Strahorn, projector of the Oregon, California & Eastern railroad, at the Commercial Club luncheon on Saturday discussed his railroad project and the effect it would have on the growth of Bend. At the same time he showed the interest he takes in the town by urging that everything possible be done to save the trees in the city, pointing out the benefits to be gained by attracting tourists and other classes here.

Mr. Strahorn began his talk by congratulating the club on the great developments which had taken place here since he was first here in the fall of 1914. It was the first real development which had taken place since the railroads ceased construction, he said, and meant a great deal to the town because the ending of the railroad building had given the impression that there was nothing here.

The next thing to do toward the new railroad, Mr. Strahorn said, was to get a few men from each of the towns interested, to go to Portland and get the attention of the lenders there. Few of them have any idea of the possibilities of Central Oregon. If they can be visited and educated to a knowledge of what the new road means to Portland a long step toward it will have been taken.

Speaking of the terminal bond issue, Mr. Strahorn thanked the town for its recent vote and expressed the hope that when the matter was voted on again there would be none against it. Those who feared the loss of business because of the construction of new lines were mistaken, he said, and told of the experience of Denver and Salt Lake and other western cit-

(Continued on page 6.)

## MONEY READY FOR ROAD WORK

### STATE AND COUNTY SPEND \$20,000

### Seventeen Miles of Excellent Road Between Bend and La Pine Assured—Cinders Will Be Tried Out—Labor Gets Much of Money.

SALEM, April 21.—The Highway Commission today ordered work commenced upon the state road south from Bend as soon as the Crook county court formally approved the plans and produces the \$10,000 with which the county is matching the state's expenditure.

This means the creation of a first class road from Bend south for about 17 miles, scientific utilization of lava cinders for road work, and the expenditure of nearly \$20,000 in labor in the immediate vicinity of Bend this summer.

The route selected by the Highway Department follows the general line of the old road to La Pine, passing to the east of Lava Butte. However, while in the approximate location of the old road it touches it hardly at all. An excellent grade has been secured. The new road will be built from the outskirts of Bend 17 miles south to a point near Shonquest's ranch, where connection with the old road will be made.

The route passes close to the Butte conveniently for the most efficient utilization of cinders. It is estimated that after the grading has been completed a considerable sum, perhaps in excess of \$5,000 will remain for surfacing work. This will be used, says State Engineer John H. Lewis, for experimenting with lava cinders. Several different methods of working the lava will be tried out, and probably a short stretch of hard surface pavement will be laid, to demonstrate just what can be done with cinders and to get cost data and ascertain how the preparations will stand wear.

The major portion of the work will be handled directly by the Highway Department on force account, using county equipment to a consid-

(Continued on last page.)

## FLY SWATTING COMES NEXT IN CIVIC IMPROVEMENT WORK

### Lectures to be Given on Menace of Fly—Problem in Fly Production to be Worked Out.

With a movement well under way to keep the city clean the Civic Improvement committee is now starting a "Swat the Fly" campaign and the next few weeks will see activity in a fly killing movement. Lectures and demonstrations are planned and the active aid of the school children enlisted.

The first lecture is being given in the Dream Theatre this afternoon to the school children. The lecture is furnished by the extension division of the University of Oregon and is illustrated with slides. It will be repeated tonight at the Presbyterian church and given again on Thursday and Friday at places to be announced later.

In connection with the movement the following problem is being given to the children in the schools to work out.

"If one female fly will lay 75 eggs in ten days, and if it takes ten days for each egg to hatch, and if the young fly begins to lay eggs when it is ten days old and if it takes 100 flies to make a cubic inch, how many bushels of flies will two female flies produce from April 1, to June 30?"

## HAVE MANY INTERESTS

### Brooks-Scanlon Ownerships Are Widely Scattered.

The local mill of the Brooks-Scanlon Lumber Co., is the first to be operated by the Brooks-Scanlon interests in the West, but by no means the first saw mill they have been interested in.

Besides the Bend mill the Brooks-Scanlon interests own two large saw mills at Kentwood, Louisiana, and one on the Bahama Islands. They have also large timber holdings in Louisiana, Florida, the Bahamas, Oregon and British Columbia. They formerly operated a large mill at Scanlon, Minnesota.

They are also interested in a pulp and paper mill at Powell River, British Columbia. Brooks Brothers, consisting of Dr. D. F. Brooks and his brother, A. S. Brooks, own a lumber yard in St. Paul, Minnesota.

## COUNTY BUYS CRUSHER

### New Piece of Road Machinery Recently Purchased.

(Crook County Journal.)

Commissioner Blanchard informs us that the county has purchased a new up to date Ft. Wayne rock crusher for use on the county's roads. The crusher was shipped from Portland to Redmond, Tuesday, and will be installed at the rocky point west of the Dodson place on Crooked river by next Monday.

The machine will cost approximately two thousand dollars, is portable and may be run by any power. At the present location electricity will be used and the county engine will be available at other times.

Roads of crushed rock become conditioned for travel sooner than those constructed of ordinary gravel and at the same time can be placed more cheaply. The investment is a good one and the resulting improved roads will more than balance the purchase price.

## MANY ATTEND CONVENTION

### Baptists Select Redmond the Meeting Place Next Year.

Between 25 and 30 delegates from the Baptist churches of Redmond, Prineville, Grass Valley and Bend attended the convention of the Deschutes Baptist Association held in Bend last Thursday, Friday and Saturday.

Interesting addresses were given by prominent Baptist workers on church and missionary work being carried on. A musical program was given in connection with the convention in which local talent took part.

Redmond was selected as the meeting place of the convention to be held next year.

## NEW HALL PLANNED.

Announcement was made yesterday of the purchase by G. W. Shriner of the lot at the northwest corner of Wall and Kentucky streets. It is Mr. Shriner's intention to build an amusement hall 50x100 feet in size on the lot at once. The hall will have a stage and floor for dancing or skating. It will be under the management of W. L. Doodlah, Mrs. Shriner's son, who is expected to arrive with his family soon. Mrs. Doodlah and her sister, Miss Minnie Brazelle, expect to open a mannequin and hair dressing shop in the Lawrence building.

## TO BUILD TWIN MILL AT ONCE

### SHEVLIN-HIXON WILL ENLARGE PLANT

### Definite Decision Reached on Thursday—Mill Will Have One Band at Beginning With Room For a Second—Will Add 250 Workmen.

A definite decision to increase the size of the Shevlin-Hixon plant was announced on Saturday, the decision having been made by the trustees of the T. L. Shevlin estate in Minneapolis on Thursday. The addition will be a complete new mill, or twin mill, to be built just south of the present mill, between it and the machine shop.

At the beginning the new mill will contain only one band saw but space will be provided for a second, to be installed whenever the need arises, thereby making it the counterpart of the present mill. Plans for the addition are now being drawn in the Minneapolis office of Dion & Horskotte. Construction will begin as soon as possible and it is hoped to have the new plant in operation by November 1.

To the Shevlin-Hixon plant the new mill means an ultimate doubling of sawing capacity, it is pointed out, and to this community a complete new enterprise. With the mill in operation larger crews will be required in the yards and more loggers in the woods as well as whole new crews in the mill itself, or an addition to the local working population of at least 250 men.

The announcement of the new mill was confirmed by R. W. Wetmore, secretary of The Shevlin-Hixon Company and a trustee of the T. L. Shevlin estate who arrived Monday with a party of Minneapolis friends and associates to inspect the new plant. With Mr. Wetmore are N. H. Clapp, general counsel for the Shevlin interests, J. H. Hauschild, vice president of C. W. Sexton & Co., of Minneapolis, and Irving Fish, of W. W. Eastman Co., bankers and brokers of Minneapolis, a close personal friend of the late T. L. Shevlin. They expect to leave tomorrow night.

## ROAD LOOKS REAL

### Suit Brought to Obtain Right of Way on Salem-Bend Line.

(Oregon Journal.)

ALBANY, April 26.—That the proposed new railroad from Salem to Bend through Stayton, Mehama and Mill City, concerning which there is much mystery because the names of the backers cannot be learned means business, is indicated by a suit filed in the Lin county circuit court today to secure a right of way from the Hammond Lumber Company at Mill City.

The proposed company gives its name in the suit as the Santiam Railway company, stating that it is a regularly incorporated concern under the laws of Oregon. It is alleged in the suit that the Hammond Co. owns a tract of land in sections 18 and 19 of township 2, south of ranges four and five, east of the Willamette meridian through which the company has surveyed its proposed line, that an attempt has been made to purchase the land from the Hammond company but that the two concerns cannot come to an agreement on the purchase of the land by the plaintiff corporation. A jury's judgment is asked.

## PINEHURST SCHOOL BURNS

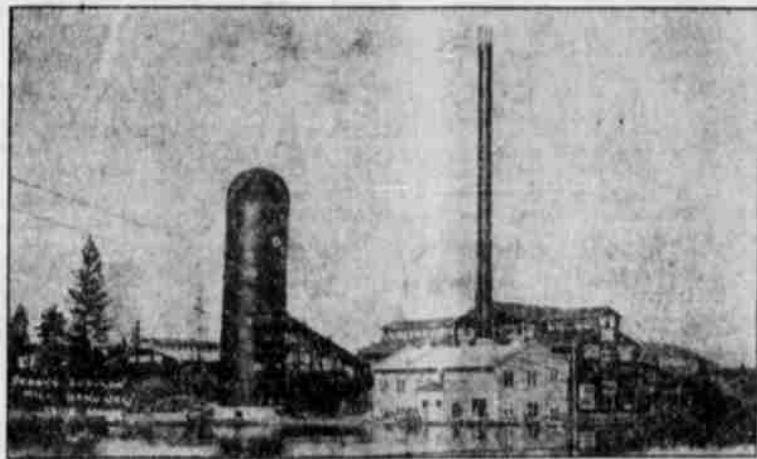
### Five Started in Woodshed at the Rear of the Building.

The Pinehurst school house was burned to the ground yesterday morning by a fire which started in the wood shed which adjoins the school building on the rear. The cause of the fire is unknown. Without means with which to fight the fire, practically everything in the building was lost. The children, who were in school, were dismissed and no injuries are reported.

The building was valued at about \$2,000 and was partly covered by insurance.

## STACKERS ARRIVE.

Two Hike stackers, to be used at the Shevlin-Hixon plant for piling lumber arrived yesterday and will be put in operation within the next few days. The stackers are electrically operated and make possible the piling of lumber to about twice the height of the ordinary pile. Poles to carry current for the stackers have already been set between the alleys at the Shevlin-Hixon yard.



BROOKS-SCANLON MILL



Dr. D. F. Brooks, President of Brooks-Scanlon Lumber Co.