

Kid Scoop .COM

THE AWARD-WINNING PRINT & ONLINE FAMILY FEATURE



© 2017 by Vicki Whiting, Editor Jeff Schinkel, Graphics Vol. 33, No. 19



Facts and Opinions About Our Planet

The following list has **three facts** and **three opinions** about the planet Earth. Can you tell which are facts and which are opinions?

- The Earth has one moon. FACT OPINION
- The Earth is the best planet in the universe. FACT OPINION
- 71% of the surface of Earth is covered in water. FACT OPINION
- The Earth is beautiful. FACT OPINION
- The Earth's diameter, the distance at its middle at the Equator, is 7,928 miles, or 12,760 kilometres. FACT OPINION
- The Earth tastes good. FACT OPINION

Remember: FACTS can be proven true for all people and places, can be duplicated, can be observed, historical, or 100% true. Usually they involve numbers and other measurable components.

OPINIONS refer to a particular person's (or group's) feeling, thought, judgment, belief, estimate, and/or anything that is not 100% true and can't be proven.

Earth Day Scavenger Hunt

Go for an Earth Day walk with your family and see if you can find each of these:

- rock
- stick
- leaf
- litter (*pick it up and throw it away!*)
- flower
- spider web
- feather
- tree bark
- bird
- insect
- something pink

Happy Earth Day

with **The Bunny Buddies**

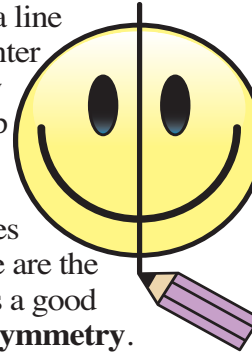


The Bunny Buddies are celebrating Spring and our beautiful planet this year! Just in time for Earth Day (April 22).

WAIT! Don't do this page alone. If this page looks **TOO HARD**, find an older buddy to help you. If it looks **EASY**, find a younger buddy and help them!

Matching Sides

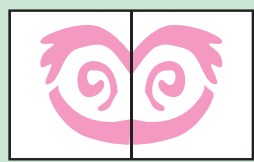
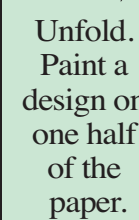
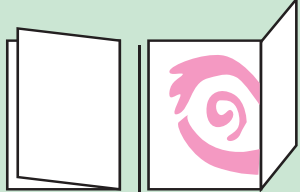
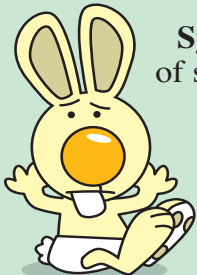
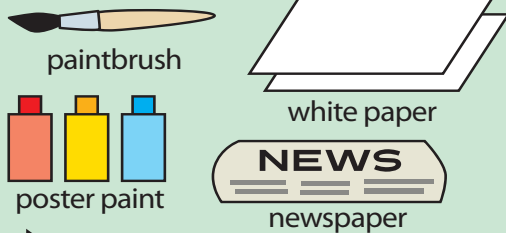
If you draw a line down the center of this happy face from top to bottom, you will see that both sides of the picture are the same. This is a good example of **symmetry**.



Create Symmetry Art

Symmetry is when both halves of something are exactly the same. Poor Baby Burt is confused. Do this project to help him understand symmetry.

STUFF YOU'LL NEED:



Cover your work surface with newspaper.

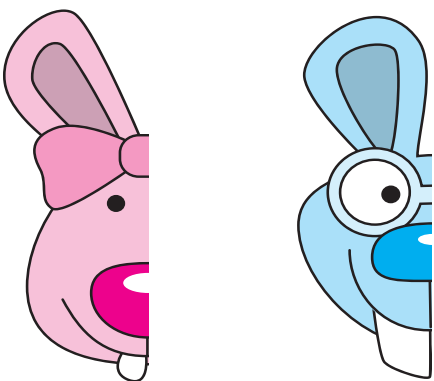
Fold a sheet of blank, white paper in half.

Unfold. Paint a design on one half of the paper.

While the paint is still wet, fold the paper in half along the fold you made and press so that the paint on the painted side transfers to the blank side.

Slowly open up the paper and you will have a matching image on both sides of the paper. **That's symmetry!**

Draw the other half of Bianca's face and Bixby's face. Make them symmetrical.

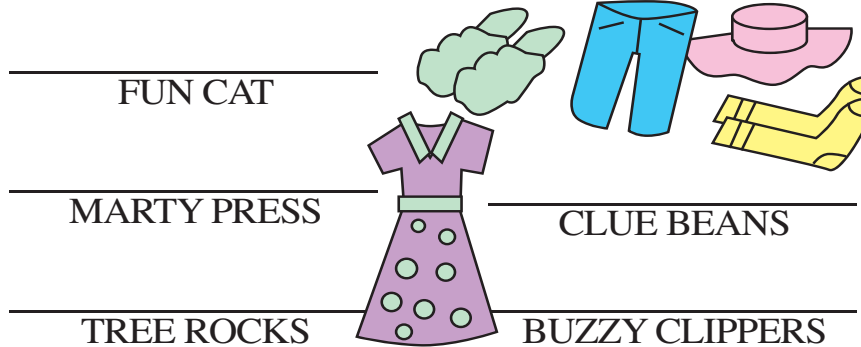


Let's Talk

A Kenyan proverb says, "The earth is not given to you by your parents, but loaned to you by your children." Discuss with your family what you think that means.

Rhyming Clothing

Bixby Bunny changed the names of spring clothes. Can you figure out what he is talking about? The real names rhyme with Bixby's silly names. For example, **LOW LIE** is really a **BOW TIE**!



Extra! Extra! Rhyme the News

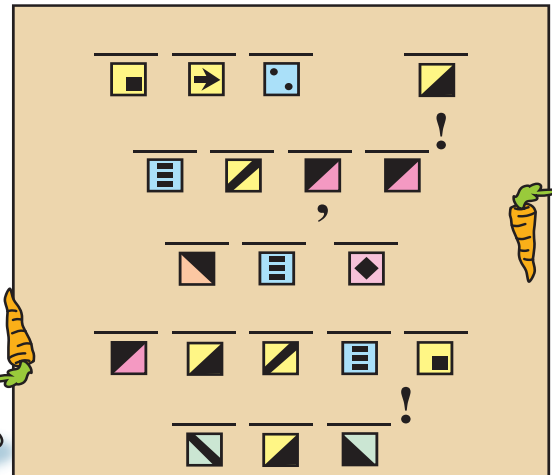
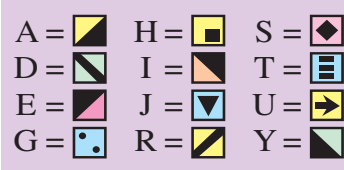
Look through the newspaper for five or more words for which you know a rhyming word. List each word and its rhyming word on a piece of paper.

Standards Link: Reading Comprehension: Follow written directions.

Kid Scoop Puzzler

Earth Day Slogan

Bingo is making an Earth Day sign to celebrate. Use the code to help him finish his sign.



Double Double Word Search

NEWSPAPER
SYMMETRY
TRANSFER
SURFACE
PROVERB
CLOTHES
RHYMING
BOTTOM
SPRING
EARTH
BUDDY
FOLD
HALF
SAME
CLUE

Find the words in the puzzle. Then look for each word in this week's Kid Scoop stories and activities.



Standards Link: Letter sequencing. Recognized identical words. Skim and scan reading. Recall spelling patterns.

FROM THE LESSON LIBRARY

Half and Half

Find a picture of a face or an object in the newspaper. Cut out the picture, fold it in half and cut along the fold. Now glue the picture onto a piece of white paper. Try to sketch the missing half.

Standards Link: Visual Art: Create representations with bilateral symmetry.



Write On!

My Favorite Vegetable

Use at least three of your five senses to describe your favorite vegetable.

Find local businesses. shoppelocal.biz

Cottage Grove Sentinel + shoppe Keep it local.

www.shoppelocal.biz