

## Florence Relay For Life to hold 2016 kickoff meeting

Relay For Life of Florence event leaders have scheduled a meeting for Monday, Dec. 14, to organize the kickoff event, which will be a chili cookoff.

The meeting will be from 6 to 8 p.m., at Craig's Family Barbecue, 1161 Highway 101.

Many committee positions

will be open.

To volunteer for a position and help plan the kickoff, come to the meeting and bring a holiday ornament for the ornament exchange.

The goal this year is \$60,000 and so far, \$1,700 has been raised.

The theme for Relay Life is: "Lights, Camera, Cure!"

[www.TheSiuslawNews.com](http://www.TheSiuslawNews.com)

Invest in Florence by banking locally!



MEMBER FDIC 541-997-7121 opbc.com @OregonPacBank

## Confused About Health Insurance? We Can Help!

December 7, 9:30am - 5pm  
DHS Office at  
3180 US-Hwy 101

Get FREE one-on-one assistance with new, renewal, or urgent Oregon Health Plan applications.

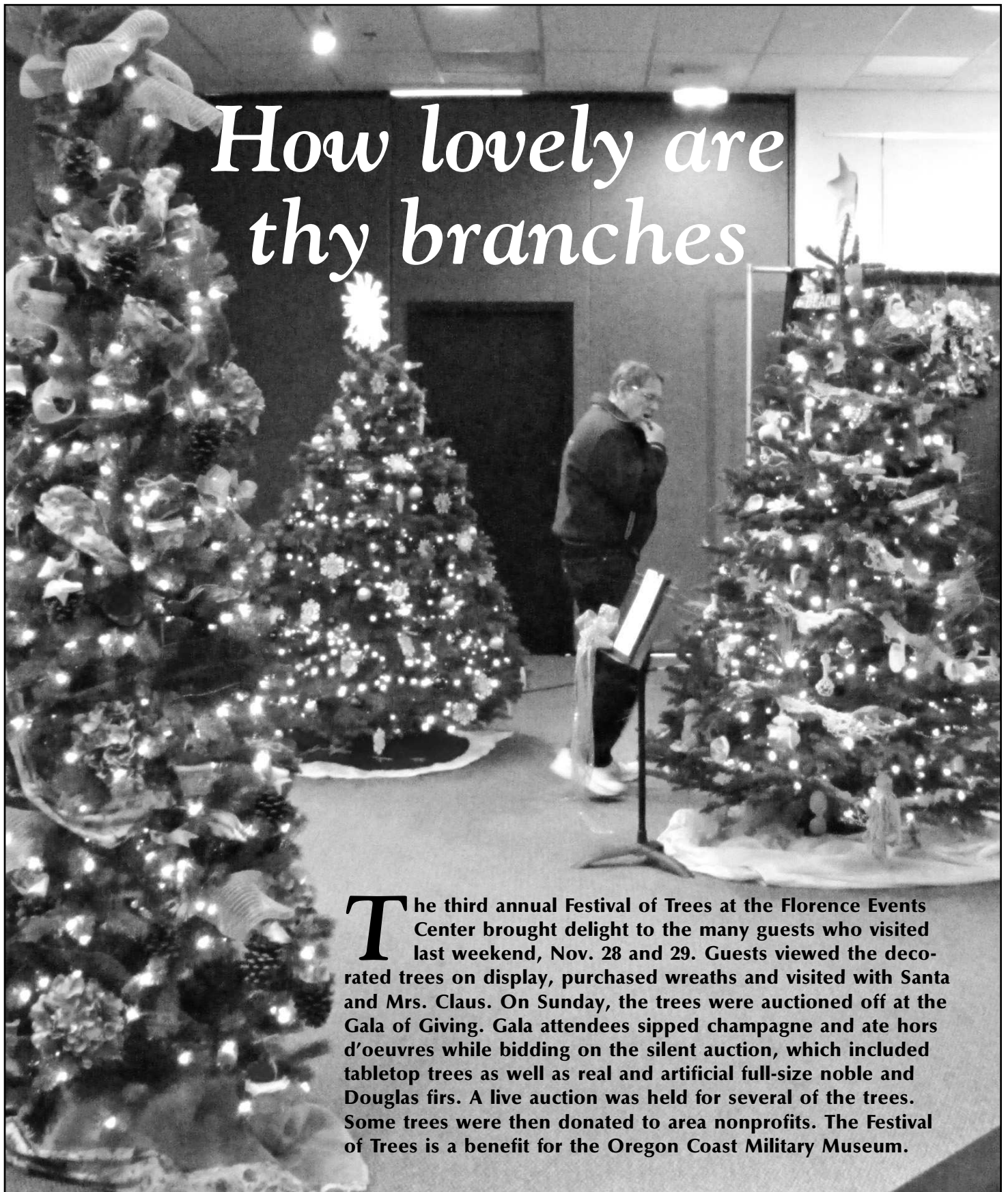
For more information, call 541-543-5484



Planned Parenthood of Southwestern Oregon



## ANNUAL FESTIVAL OF TREES



How lovely are thy branches

The third annual Festival of Trees at the Florence Events Center brought delight to the many guests who visited last weekend, Nov. 28 and 29. Guests viewed the decorated trees on display, purchased wreaths and visited with Santa and Mrs. Claus. On Sunday, the trees were auctioned off at the Gala of Giving. Gala attendees sipped champagne and ate hors d'oeuvres while bidding on the silent auction, which included tabletop trees as well as real and artificial full-size noble and Douglas firs. A live auction was held for several of the trees. Some trees were then donated to area nonprofits. The Festival of Trees is a benefit for the Oregon Coast Military Museum.

Spruce Point Assisted Living Community

Living, Loving, & Thriving

375 9th St  
Florence, OR 97439  
[www.spruce-point.com](http://www.spruce-point.com)

Caring for a loved one with Alzheimer's disease or other memory related illnesses can be very overwhelming. We're here to help.

### Advance Directives

Wednesday, November 18th, 2:00pm  
What is an Advance Directive? When a loved one is diagnosed with Alzheimer's disease there are many questions. One of the most confusing aspects can be the legal documents that need to be signed while your loved one is still able to participate in decision making.

### Behavin' and Misbehavin'

Wednesday, December 16th, 2:00pm  
Is your loved one resistant to assistance with care? Do they have difficulty sleeping or do they wander? Learn why these behaviors occur and what you can do to improve your quality of life and theirs!



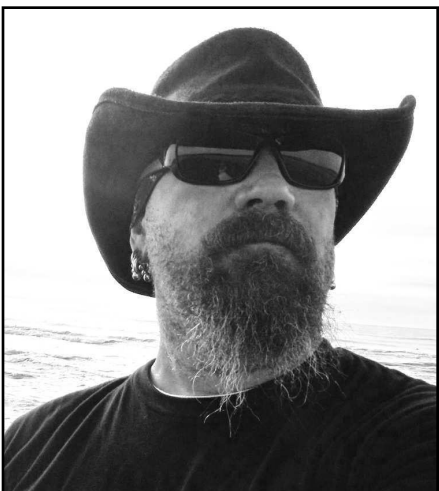
Space is limited for these FREE educational events. For more information and to reserve your seat please call (541) 997-6111 or visit us today!



PHOTOS BY CHANTELE MEYER/SIUSLAW NEWS

## WORD ON THE STREET

Winter sports season has started. What's your favorite sport?



"Anything on the water ... Surfing ... S'UP."  
—JAMES BONES, FLORENCE  
FROM THE SIUSLAW NEWS FACEBOOK PAGE



"I enjoy playing soccer, but I love watching football."  
—SYMONE WILSON, FLORENCE



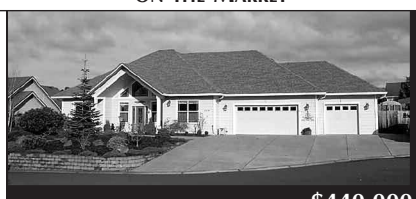
"If it's a sport I'm playing, it's tennis or softball. But if I'm watching a sport, it's football."  
—DEBBIE OLSON, BELLINGHAM, WASH.

DISCLAIMER: The opinions expressed above are solely those of the contributors and do not necessarily reflect those of the Siuslaw News or its advertisers.



Coast Real Estate  
100 Hwy. 101, Florence, OR 97439

WILLOW DUNES CLASSIC NEVER BEFORE ON THE MARKET



CB#11136 MLS#15616815 \$440,000

Diana Hackett  
Broker



Cell: 541-999-7317  
diana@cbcoast.com

### ASK THE DENTURIST..

Q What is a reline?

A A reline is putting a new surface inside your denture when your gums have shrunk and there is a space between your denture and the gum surface. Never wear your dentures in this condition as your gums may "puff" into the ill-fitting denture. Have your dentures relined every other year.



Shawn M. Murray L.D.

#### We Offer

- On-Site Lab
- Same Day Relines & Repairs
- New, Replacement & Custom Dentures
- Partial Dentures
- Dentures on Implants

Natural Dentures

(541)997-3344

1647 W. 12th, Florence

[www.naturaldentures.com](http://www.naturaldentures.com)

FREE EXAM & CONSULTATION