

CAMP KID SCOOP

BUG-A-PALOOZA

www.kidscoop.com



© 2015 by Vicki Whiting, Editor Jeff Schinkel, Graphics Vol. 31, No. 30

Kid Scoop Together:

Fill In The Blanks

Ask a friend to give you each type of word. Fill in the blanks and read the story aloud for some silly fun.

Ambrose Ant

Unlike most ants, Ambrose Ant had a terrible sense of direction. Instead of following the trail to picnics, he often wound up in _____.

All the ants _____ following him would have to _____ through _____ bowls of _____.

The Queen of the ants became very _____ . She declared that Ambrose could never leave the _____ anthill.

Unfortunately, on his way to the food storeroom, Ambrose took a wrong turn, went through a _____ tunnel, and ended up in _____.

He lives there today, where he enjoys going for a _____, munching on _____, and working as a tour guide.

All the _____ bugs agree that the _____ thing about one of Ambrose's tours is that they're always a surprise—you never know WHERE you'll go!

Standards Link: Grammar: Identify nouns, verbs, adjectives and interjections in reading.

Kid Scoop-doku™

Complete the grid by using all the letters in the word ANTS in each vertical and horizontal row. Each letter should only be used once in each row. Some spaces have been filled in for you.

N	A	
	T	N
A	T	S
T	S	

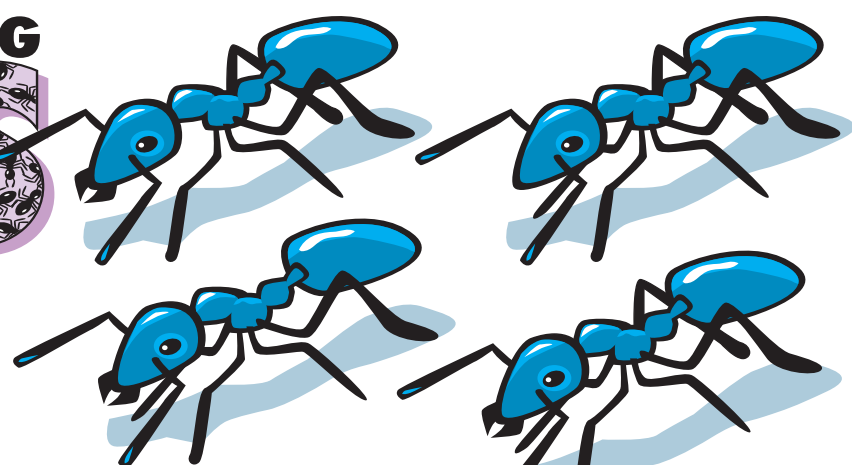
Kid Scoop VOCABULARY BUILDERS

This week's word: **FUNGUS**
The noun **fungus** means a type of plant life (such as molds, mushrooms, mildews) that grow on decaying matter.

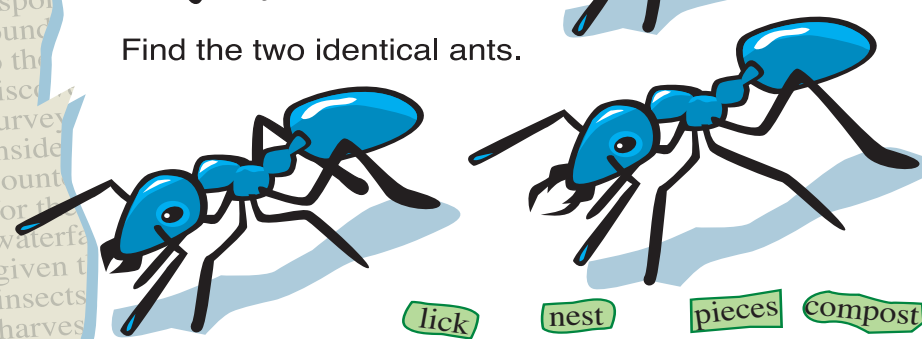
Leafcutter ants grow **fungus** gardens underground.

Try to use the word **fungus** in a sentence today when talking with your friends and family members.

AMAZING ANTS



Find the two identical ants.



Oops! Leafcutter ants removed some words from this article. Draw a line to where each word belongs.



Farmer Ants

Leafcutter ants live in the _____ and collect leaves by first _____ them into small pieces using their sharp, pointed jaws. They carry the _____ back to their nest, holding them high above their heads.

Surprisingly, they _____ eat the leaves. Instead, they use them to _____ food! Back at the _____, smaller worker ants _____ the leaves clean and cut them into tiny pieces. These are then chewed up and made into miniature _____ heaps to grow the fungus on which they _____.

Standards Link: Life Science: Living organisms have distinct structures and body systems that serve special functions in growth, survival and reproduction.

Extra! Extra! Jobs We Share

Workers in ant colonies have a variety of different jobs. Many of these are similar to jobs people have. Look through the newspaper to find people that do the following ant colony jobs:

- childcare
- security
- communications
- armed forces
- earth movers
- engineers
- flood control

Standards Link: Life Skills: Students study different life choices and the skills required.

Underground Cities

By Nellie Fly
WORLD'S SMALLEST REPORTER

Most ants build their homes or nests underground. They dig tunnels and rooms. The extra dirt is carried outside and forms a hill around the entrance.

room where the queen lays eggs. A team of worker ants cares for the queen, her ant larva and the cocoons.

Ant nests also have special rooms to store food, a nursery for young ants and resting rooms for worker ants.

Underground ant nests contain many different rooms with different functions. There is a

Chow Line

When an ant finds a large piece of food, it returns to the nest and enlists other worker ants to help carry the food. On the way back to the nest, the ant leaves a trail of odors as landmarks, so that it can find its way back to the food.



Find your way to the food storage room.

Ants can dig tunnels as deep as feet.

REST AREA

Use the code to discover facts about ants.

SECRET CODE

■ = 0	▲ = 5
● = 1	▼ = 6
◆ = 2	◀ = 7
▲ = 3	● = 8
▼ = 4	◆ = 9

QUEEN

Giant Australian Bull Ants can grow to be about _____ inch (_____ cm) long.

NURSERY

FOOD STORAGE

An ant can lift _____ times its own body weight.

Catch the Reading Bug at Your Library This Summer!

Your mission is to combat the Evil Power Master who has reportedly allied with the Ant People. Are your missing group members playing a prank, or have the Ant People taken them prisoner?



Unscramble the title of this book. Then, check it out at your local library this summer! - Bert Bookworm



Standards Link: Reading Comprehension: Read age-appropriate text in a variety of genres.

Double Double Word Search

- COCOONS
- LARVA
- LEAVES
- WORKERS
- FUNGUS
- COLONY
- NURSERY
- STORE
- TRAIL
- LANDMARKS
- ODORS
- COMPOST
- ARMED
- FACTS

Find the words in the puzzle, then in this week's Kid Scoop stories and activities.

S	Y	R	E	S	R	U	N	C	S
A	R	S	R	E	K	R	O	W	K
S	R	O	B	C	O	C	L	C	R
L	U	M	D	E	O	O	O	O	A
E	A	G	E	O	R	L	N	M	M
A	Y	R	N	D	D	O	W	P	D
V	E	S	V	U	L	N	T	O	N
E	S	T	C	A	F	Y	L	S	A
S	L	I	A	R	T	E	R	T	L

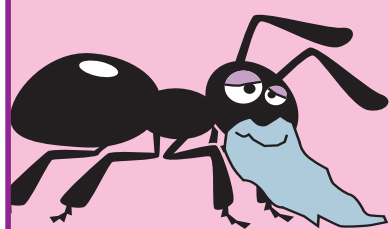
Standards Link: Letter sequencing. Recognized identical words. Skim and scan reading. Recall spelling patterns.

FROM THE Kid Scoop LESSON LIBRARY

Planet of the Ants

According to the National Pest Management Association, the world harbors 12,000 species of ants. Look through the newspaper and find four or more numbers that add up to exactly 12,000.

Standards Link: Number Sense: Calculate sums to 12,000.



What do you call a 100 year-old ant?

ANSWER: Antique!

Write On!

Ant Vacation

Imagine the ants are going on vacation. Where will they go? What will they do? What will they pack?



CHAD E. CLEMENT, D.D.S., P.C.
Keep Your Toothbrush Clean

Rinse your toothbrush after brushing.
Give it a thorough washing to remove any leftover toothpaste or debris.

Celebrating 6 Years of offering the Florence Community Dental Care

Dr. Chad Clement **541-997-3423**
1256 Bay St. Old Town Florence

"Experience local service from professionals who care about the communities they serve."

FULL SERVICE & ONLINE BANKING
COMMERCIAL & CONSUMER LOANS
BUSINESS CREDIT CARD PROCESSING
MORTGAGE LENDING

LORI GATES
Florence Branch Manager

Oregon Pacific Bank

FDIC COOS BAY • FLORENCE • ROSEBURG • www.opbc.com

KIDS SUMMER CAMPS

HS RETREAT
9-12 GRADES
JULY 27-31

For information and to register call:
Florence Christian Church
541.997.2961

www.florencechurch.com