

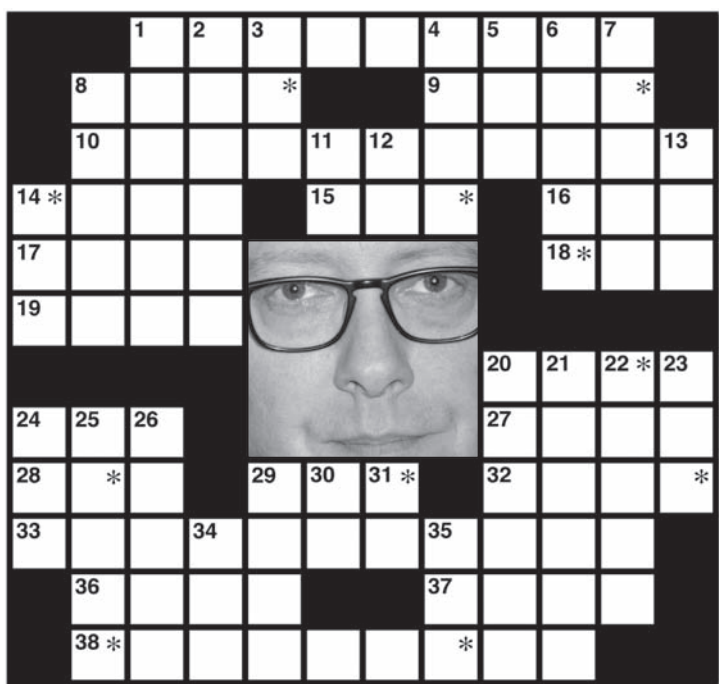
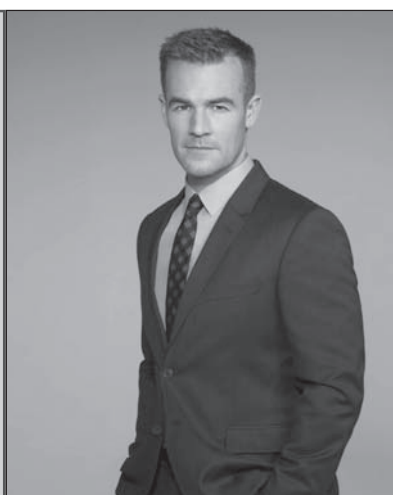
crossword fun

Shania: Still the One Live From Vegas
 Saturday at 9 p.m. on **KATU**, **KEZI**
 She's wrapped her two-year run as a Las Vegas headliner, but Shania Twain is seen taking the stage at the Colosseum at Caesars Palace in this new special, offering highlights from her concerts as well as behind-the-scenes footage. Don't expect the most objective portrait, since Twain also is the executive producer here, but that likely won't matter to the country-crossover star's many fans.



The Last Man on Earth
 Sunday at 9 p.m. on **KLSR**
 Also the show's creator, "Saturday Night Live" alum Will Forte has the title part in this new sitcom, which puts spins on a concept treated seriously in such movies as "I Am Legend" and "The Omega Man." In the year 2020, Phil Miller (Forte) apparently is the sole survivor of a virus — and just as he's convinced no one else is alive, he gets a surprise. This hour-long premiere combines two episodes, "Alive in Tucson" and "The Elephant in the Room."

CSI: Cyber
 Wednesday at 10 p.m. on **KVAL**
 Fresh from her Oscar run for "Boyhood," former "Medium" star Patricia Arquette returns to television work as the "CSI" franchise expands again. Introduced on the parent "CSI" show, Avery Ryan (Arquette) leads a team specializing in cybercrimes as they trace an abduction to a hacked baby monitor in "Kidnapping 2.0." Fellow series veterans James Van Der Beek ("Dawson's Creek") and Peter MacNicol ("Ally McBeal," "NUMB3RS") also star.



The identity of the featured celebrity is found within the answers in the puzzle. In order to take the TV Challenge, unscramble the letters noted with asterisks within the puzzle.

Across

- 1. Henstridge of "Marvel's Agents of S.H.I.E.L.D."
- 8. Cartoon dog
- 9. Zone
- 10. Role on "Scandal" (2)
- 14. Actress Gertz
- 15. "Scarecrow and ___ King"
- 16. "Vanilla ___"; Tom Cruise movie
- 17. Bottom
- 18. Suffix for host or poet
- 19. 1974 best comedy series Emmy winner
- 20. Diamond officials, for short

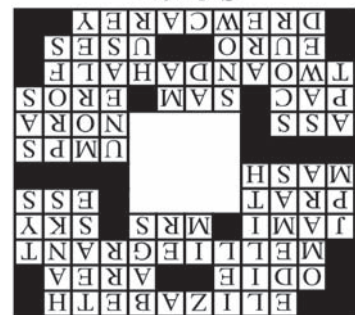
- 24. Beast of burden
- 27. Sally Field's role on "Brothers & Sisters"
- 28. ___-Man; early video game
- 29. Hazeldine of "Resurrection"
- 32. Greek god of love
- 33. "___ Men"
- 36. Lira currency replacement
- 37. Takes advantage of
- 38. Game show host (2)

Down

- 1. Water accumulation problems
- 2. Role on "Cheers"

- 3. Ending for Nathan or Dan
- 4. Paper sacks
- 5. Go astray
- 6. Rib
- 7. Actor Tom
- 8. Actress Kate ___ of "Dynasty"
- 11. "___ With Her" (2003-04)
- 12. Series for Maura Tierney, once
- 13. Cobb and Burrell
- 14. Monogram for financier and banker Morgan
- 20. Angst
- 21. Safer, for one
- 22. Univ. teachers
- 23. Scandinavian airline
- 24. Likely
- 25. Cut with a toothed tool
- 26. Scrub
- 29. "___ Dogs"; 2002 film for Cuba Gooding, Jr.
- 30. Commercial
- 31. Yo-Yo, for one
- 34. "The Boys ___ Back" (1994-95)
- 35. "Ben-___"; Charlton Heston classic

Solution James Spader





Campbell Productions
 (541) 991-2920
 Video Production & Duplication Since 1975
 Alan Campbell
 Owner
 Campbell@winfinity.com

HD Video

www.thesiuslawnews.com

E-EDITION • SPORTS • TOP STORIES • OBITUARIES • WEATHER • FORUMS • BLOGS