

EXPANSION SALE BARGAIN WEEK

Clothing and Furnishing Goods Department

We're at your service with a complete line of the newest and best of all the fall suits you've seen this season, or are to be seen any where. In the matter of quality, of style, fit and workmanship, in a word, in point of all those excellences which a satisfactory suit ought to possess, these speak most eloquently for themselves.

Men's all-wool, tailor-made suits, new fall and winter styles, regular value \$12.50, \$14.00, \$15.00, sale price, \$10.95.

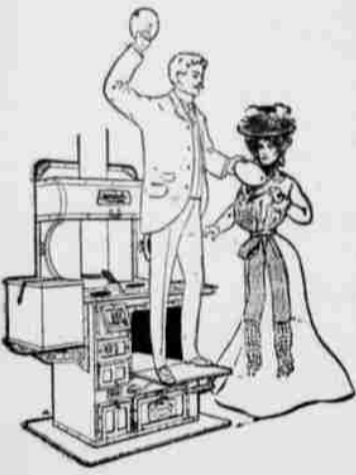
325 men's all-wool, tailor-made suits, regular value \$16.00, \$17.00 and \$18.00, you may come in and select from our clothing counters any of the suits at \$12.75.

Alexander Dept. Store
THE GIVERS OF BEST VALUES

IT'S THE BEST SMOKE ON THE MARKET



Manufactured by A. ROHDE



Monarch Ranges

Malleable iron and the kind you cannot break. I have a full line of Ranges, Heaters, both wood and coal, and invite you to call and examine the same before buying.

T. C. TAYLOR
The Hardware Man

NEW RIVER BOAT

STEAMER MOUNTAIN GEM
NOW IN SERVICE.

New Era for Lewiston Begins With the Installation of the Elegant River Boat to Ply on the Upper Snake—Trial Trip Proves That the New Boat Draws But 27 Inches of Water When Loaded, and Can Run the Rapids Without Aid of a Line.

Lewiston, Oct. 2.—The steamer Mountain Gem made the initial trip to Asotin Saturday and brought to the city 1019 sacks of wheat while the steamer Spokane, loaded with 1000 sacks.

The trip was a most successful one and Captain Gray expresses himself as well pleased with the craft. The start was made at 8:30, but a considerable delay was encountered at Cox's rapids while the steamer Spokane was lining over the swift water.

The Mountain Gem ascended the rapids without the aid of a line but again lost more than two hours while the Spokane was loading at Asotin. The run to Asotin was made in one hour and 10 minutes running time and but 27 minutes were required to make the run from Asotin to Lewiston.

The steamer was loaded at Asotin in a little over two hours and the cargo was delivered to the company platform along the Northern Pacific track in this city for shipment. With the load of 1019 sacks of wheat the Mountain Gem settled into the water but eight inches which gives the vessel a draught of 27 inches, while the steamer Norma takes 29 and the Lewiston 32 when running light.

Messrs. C. F. Allen of the Lewiston Steamboat Company, Messrs. Peterson, Wilkinson and Nehrhood of the Eureka company, and E. W. Eaves of the Vollmer-Clearwater Grain Company were passengers on the steamer and reported a most enjoyable trip.

The engines are in charge of Engineer Walker, who occupied the position of assistant engineer on the steamer Innaha. Oscar Oleson, purser on the Innaha, fills a similar position on the Mountain Gem and Frank Fesler, general agent, is acting as mate at the present time. After today it is expected that the boat will make two trips daily. As soon as the unloading apparatus is arranged it will take but a short time to remove the cargo to the cars at the Lewiston terminus.

More Lands at Auction.
Crookston, Minn., Oct. 3.—The sale of the lands of the ceded portion of the Red Lake Indian reservation was resumed in this city today. The original sale was held at Thief River

Falls in June, but the attendance was small and not more than one-third of the land was sold. More than 1000 tracts are to be offered at the present sale.

Montana State Fair.

Helena, Mont., Oct. 3.—The Montana state fair which opened today is in every respect the most notable exhibition of its kind ever held in the state. During the past year a number of new buildings have been constructed on the ground and these are all well filled with exhibits illustrating the various industries and resources of the state. The mining, livestock and agricultural departments are well up to the standard of former years, while the manufacturing exhibits far surpass anything ever attempted before. Another interesting feature of the fair will be the race meeting, which will continue through the entire week. Today's attendance was large for the opening day and record-breaking crowds are expected later in the week.

Tuberculosis Congress.

St. Louis, Oct. 3.—Leading medical men, not only of America, but of Europe as well, are attending the American International Congress of Tuberculosis which opened in St. Louis today. The sessions will continue three days and will be devoted to the discussion of the latest methods of curing and preventing the spread of the "white plague."

Pittsburg Bank Merger.

Pittsburg, Pa., Oct. 2.—Stockholders of the North American Savings Company, at a meeting today, voted to relinquish control of the Fort Pitt National Bank, which in turn absorbs the Fifth National Bank. The new concern will be known as the Fort Pitt National Bank, and will begin business anew with deposits amounting to \$4,000,000.

Allied Printing Trades.

St. Joseph, Mo., Oct. 2.—Several score of delegates were present today at the opening of the state convention of the Allied Printing Trades. The sessions will continue until Thursday and will be devoted to the discussion of various subjects of importance to the craft.

Killed by 10,000 Volts.

Portland, Oct. 3.—While working 60 feet from the ground stringing electric wires Saturday evening, Tom Waldron's hat came in contact with a live wire and 10,000 volts of electricity passed through his head, killing him instantly.

What Is Life?

In the last analysis, nobody knows, but we do know that it is under strict law. Abuse that law even slightly, pain results. Irregular living means derangement of the organs, resulting in Constipation, Headache or Liver Trouble. Dr. King's New Life Pills quickly readjust this. It's gentle, yet thorough. Only 25c at Tallman & Co.'s drug store.



Makes Light Bread

Made of egg and phosphate, Crescent Baking Powder gives better satisfaction than any other. "Crescent" contains no lime, Rochelle salts, etc., and leaves no bitter or nasty "baking powder" taste in the food.

Sold Everywhere 25c



Gee! But it's Good

THE VERDICT OF EVERY ONE WHO USES DIAMOND "W"

Wadhams & Co. Inc. Wholesale Distributors Portland, Ore.

Ask Your Grocer

MONTERASTELLI BROS. Marble and Granite Works

Anyone intending to secure a monument or headstone for relative or friend will do well to see us. Largest collection to select from. Lowest prices.

MONTERASTELLI BROS.

New Stone Building, Court Street, next to Domestic Laundry.

Direct from Europe

DO WE RECEIVE A PORTION OF OUR STOCK. THERE IS NOTHING TOO GOOD FOR THE IRISH, AND THERE IS NOTHING TOO GOOD FOR THE PEOPLE OF PENDLETON. IN ELECTRICAL SUPPLIES THERE IS NOTHING WE CANNOT SUPPLY YOU WITH.

WE ARE DAILY EXPECTING THE ARRIVAL OF THE MOST MAGNIFICENT LINE OF EUROPEAN ELECTRIC PORTABLE LAMPS AND HANGING PICTURES EVER SHOWN IN THE WEST. THE EARTH PRODUCES NO FINER OR MORE BEAUTIFUL GOODS THAN THESE. THE FOLLOWING IS A LETTER WE HAVE RECEIVED, WHICH EXPLAINS THE DELAY IN THE ARRIVAL OF THESE GOODS:

PORTLAND, ORE., Sept. 27, 1904.

Pendleton Electric Supply House,
Pendleton, Ore.

Gentlemen:—

Answering your favor of the 26th inst. we beg to state that the Electrolers are on the way from Europe, and are due any day. We hope to ship directly.

Always ready to serve you we remain, yours truly,

M. SELLER & CO.

Your Electrical Wants are What We Want to Supply

Pendleton Electrical Supply House

Maple Brothers, Proprietors

217 Court Street