

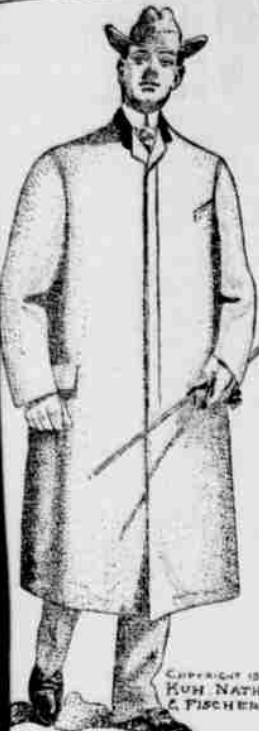
The Peoples Greatest Outfitters

## Do You Like This

Its one of the many new styles we are showing in mens overcoats. Very dressy and comfortable when on.

The Fall lasts of Florsheim shoes are nobby, something out of the ordinary they just come in by express. We invite your inspection.

**ALEXANDER DEPT. STORE**



THE GIBSON

If you enjoy a good article, then smoke  
**THE PRIDE OF UMATILLA**  
OR  
**PENDLETON BOQUET**  
They are home made and of the best tobacco. A. RHODE, Maker

You are Taking no Chances When You Use

# Pure Distilled Water Ice

Manufactured and sold by the Ross Ice & Cold Storage Company. No other distilled water ice sold in the city. Be sure you call up Phone Main 1881 when you want

## PURE ICE

Customers Always Welcome at the Plant

# Ross Ice Cold Storage Company

Phone Main 1781 Ice Office Phone Main 1881

## Package GOLD LEAF Coffee FREE

Every package of Gold Leaf Costa Rica and Gold Leaf Java & Mocha Coffee contains one ticket. These goods are the best ever placed on the market for the money. Try a package and if not satisfactory, return it to us and he will refund your money. Try Gold Leaf brand spices, teas, extracts and baking. They are the best. Once tried always used.

**LAND COFFEE & SPICE Co.,** PORTLAND, OREGON

**MONTERASTELLI BROS.**  
Marble and Granite Works  
MONUMENTS, HEADSTONES, COPINGS AND BUILDING STONE  
We do our own work and guarantee the same at lowest price. Estimates given on all kinds of Cut Stone. We have a large stock and would be pleased to have you examine it.  
Main Street Pendleton, Oregon  
Near O. R. & N. Depot  
BRANCH SHOP AT HEPPNER, ORE.

## WEEKLY FASHION LETTER.

New York, Sept. 19.—The careful chronicler of events fashionable will hesitate before making too positive declarations concerning the season's modes for, like stocks, fashions are subject to change without notice.

At the initial inpour of advance styles everyone was positive that the only materials considered de rigueur for autumn wear would be the mixtures and rough goods; now we are informed with as much assurance that highly finished fabrics will not be dethroned from their high estate. And this is as it should be, for after all it would be difficult to find materials that blend so effectively with furs that will be worn this winter as the satin faced cloths, to say nothing of their adaptability to the more elegant demands of dress.

Tweeds, zibelines and chevots are a little too incongruous in combination with exquisite embroideries even for the women of somewhat startling originality; no fabrics, however, are more chic for the severe lines of cutting and fitting.

### Dubarry Shades in Favor.

That elastic term, "Dubarry," which has been employed variously for new shades of green, blue and pink comes into play again this season in naming a soft, rich brown, which will be greatly worn in smooth finished materials. An imported design intended for a slender figure, has a plaited skirt flounce depending from a scalloped yoke edged with Bulgarian embroidery. The flounce hangs in full, straight folds to below the knees, where it is tucked in two very wide corded tucks, for all the world like a wash silk or linen material. The second tuck is just above the hem and the effect is of three tucks of equal width.

Instead of a jacket the waist has a bodice effect with a yoke of dyed brown lace lined with white satin. The front opens over the vest with a slight fullness and has projecting facings of leaf brown, orange, canary and white panne velvet, the color scheme being arranged so that the white falls next to the brown face of the vest.

The sleeves are laid in wide tucks over the shoulders and at the elbows a simple graduated ruffle of the cloth lines with the lace covered white satin falls over a close-fitting cuff. The neck is completed with a soft stock of brown chiffon, the dyed lace, panne velvet and white net combined in delightful confusion.

### Plaids for Entire Costumes.

Until now, plaids have been used most as a trimming, but later in the season they will be prominent for entire costumes. A natty street dress has a dark green background striped with blue and subdued red in an irregular plaid with long black silk hairs flecked in the spaces of the plaid. The skirt is made perfectly plain, but gains an indescribable air of smartness from its perfect cut.

The jacket is of the long, close-fitting variety with seams stoutly stitched. There are pockets above the bust and elbow, the belt on either side of the front, stitched with triangular laps of the plaid piped with dull green satin. Buttons of the same material are used for the fastening, but instead of button-holes, loops of green cord are employed.

The jacket is a blouse, not too full at the front and finished at the shoulders with a close-fitting cape of zibeline trimmed with a quantity of tiny plaid buttons. There is a vest-piece of the braid in wider bands and these extend above the cape to form the finish of a collarless effect. A shirt waist of plaid French flannel is worn beneath the blouse. For plain cloth suits the plaid braids furnish most desirable brightening effects.

### Shirt Waists for Fall Wear.

The autumn counterpart of the shirt waist hat is a very smart little affair and more expensive than its summer rival. Particularly fetching is a wooly red felt with broad upward curving brim that spreads into a flat crown. The crown is pierced with big openings that are button-holed and starting through these openings are two black-headed red birds put there in the guarded fashion of birds startled in their nests.

Another smart hat is of finely tucked English felt, saucily up-turned at the front with an inclinal made for no other apparent reason than to accommodate a broad band of satin

# BEDROOM OUTFIT SALE

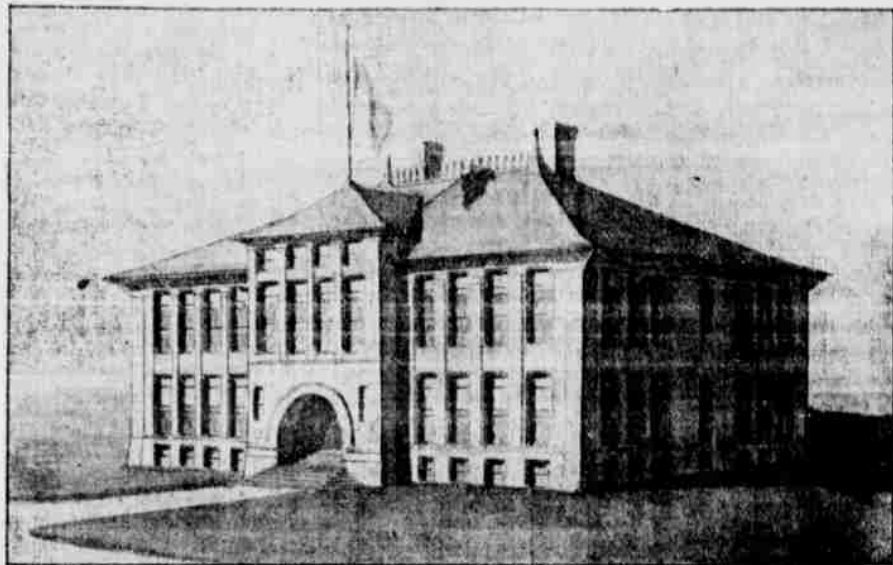
For a few days, until this advertisement is changed, we will make the following special discounts and prices on all bedroom furnishings.

Lace Curtains of all kinds, 10 per cent discount  
Bed Spreads, white, all sizes, all grades, 10 per cent discount.  
Cotton Blankets, all colors and qualities, 10 per cent discount.  
Wool Blankets, all grades except Pendleton Woolen Mills blankets, special discount of 10 per cent.  
Large Size Comforts, cheap ones and fine ones, too, 10 per cent discount.

Large Sheets, best quality, 65c sheets, special 58c each.  
Pillow Cases, best quality, 36 inches long, special 14c each.  
Bed Ticking, straw or wool ticking, good quality, 9c yard.  
Good Feather Ticking, two grades, 17c and 15c per yard.

# THE FAIR

The Place for Bargains.



## PENDLETON ACADEMY

New Building, Class Rooms Large and Cheerful, Well Ventilated, Perfectly Lighted. All Recently Renovated and Set in Proper Order for the New Year's Work.

### Fall Term Opens Monday, Sept 14.

This institution is prepared to do thorough work in all public school grades, as well as in all academic departments embracing English, Latin, Greek, German, French, History, Mathematics and Oratory.

A KINDERGARTEN Department will be opened under the superintendence of Mrs. J. H. Hall, a trained Kindergarten teacher, on Tuesday, Sept. 29, and a comfortable conveyance will be provided to carry all small children for both Kindergarten and Primary departments, to and from school under the personal care of one of the teachers.

Address all inquiries to Prof. W. H. Bleakney, Pendleton, Ore., or call at the President's Office in the Academy Building.

ribbon which is laced through either side and tied in a big soft bow.

### Fur Trimmings.

Fur is combined with the new fabrics on many of the smart hats. One very smart design is of grey with a long, silky surface. It is turned up at both sides and faced with Persian lamb. A Persian lamb ornament like a buckle fastens a long drooping plume of cocque's feathers, grey in tone and touched with green and gold.

An important feature of all winter garments is the buttons employed either for purposes of fastening or ornamentation. For the latter buttons the size of a florin are considered smartest; they are made of jet, paste, steel and the dull shades of velvet and constitute a very ornate trimming.

Not only are these buttons used on wraps and gowns, but they play an important part in the season's fashionable millinery. Ready to wear hats show them in every imaginable variety and sometimes if the fabric of the hat is non-decorative two or three different kinds of buttons are combined with the other trimming. Autumn gloves are more heavily stitched this year than ever and a few exclusive designs have detachable silver or gold buttons that can be worn in sets. Again the accommodating Dubarry comes into play in a soft dull red that goes well with almost any gown.

MAUDE GRIFFIN.

### Notice.

All persons indebted to H. M. Sloan, please call and settle their accounts. Blacksmith shop corner Cottonwood and East Alta.

## St. Joseph's Academy

Pendleton, Oregon.

For Boarding and Day Students. Conducted by the Sisters of St. Frances of Philadelphia. Classes will be resumed September 7th.

For Terms, etc., Apply to

**SISTER SUPERIOR**

## COE COMMISSION CO.

CAPITAL AND SURPLUS, \$300,000.00

Chicago, New York and Minneapolis quotations received direct at the Pendleton office over the best extensive private wire system in the world.

REFERENCE: 650 National and State Banks including Pendleton Savings Bank

OFFICE: 120 Court Street

**B. E. KENNEDY, Mgr.**

[ELATERITE is Mineral Rubber.]

YOU MAY INTEND BUILDING or find it necessary to REPLACE A WORN-OUT ROOF

## ELATERITE ROOFING

Takes the place of shingles, tin, iron, tar and gravel, and all prepared roofings. For flat and steep surfaces, gutters, valleys, etc. Easy to lay. Temperatures for all climates. Reasonable in cost. Sold on merit. Guaranteed. It will pay to ask for prices and information.

THE ELATERITE ROOFING CO.

Worcester Building.

Portland.