



PORTLAND, OREGON, SATURDAY EVENING, SEPTEMBER 10, 1904

WILLIE WESTINGHOUSE'S MACHINE PAINTS THE LANDSCAPE RED



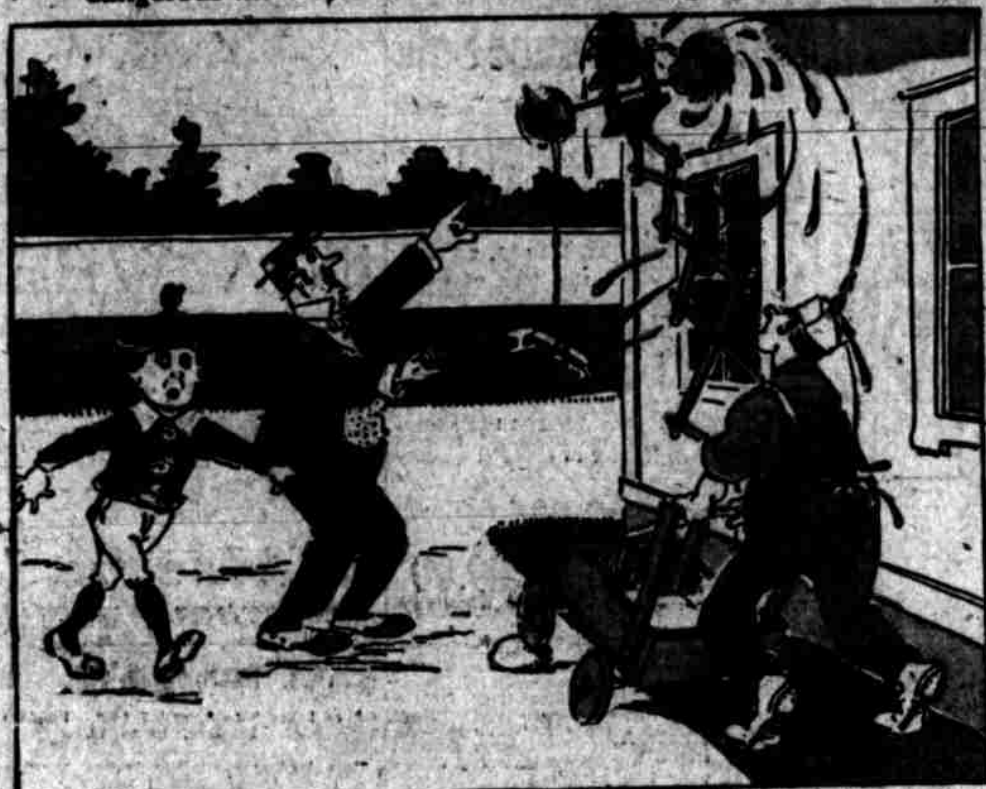
1. Dear Tommy:—The Painters are doing up our house. It's awful dangerous the way they work on those swinging scaffolds.



2. I built an automatic house-painter with an automatic revolving brush run by a weight.



3. You could elevate it to any height and just push it along the side of the house.



4. It was working fine when the painter ran it against a stone.



5. Then there was trouble. Say, Tommy, it was awful.



6. Papa, of course, blamed me because the painter ran the machine against the stone. Yours, Willie.

HOW PRETENDING PERCY'S SCHEME TO GET OUT OF SCHOOL WENT WRONG



I'LL BE REVENGED ON THAT MISS TOOTSIE FOR THROWING ME DOWN. THESE ROSES ARE NICELY TRIMMED WITH POISON IVY



IF YOU TAKE THIS BOUQUET TO MISS TOOTSIE'S I'LL GIVE YOU A QUARTER.



REVENGE IS MINE!



OH, YOU DEAR, GOOD LITTLE BOY TO BRING ME SUCH LOVELY FLOWERS!

THEY'RE FOR YOU, DEAR TEACHER.

HE'S GITIN' SOLID WID DE TEACHER.



HOW DELIGHTFUL THEY SMELL!

I PICKED THEM FOR YOU ALL MYSELF.

GEE! I WISH I WUZ HIM.



HE POISONED ME WITH POISON IVY!

GEE! IT'S THE PRINCIPAL!