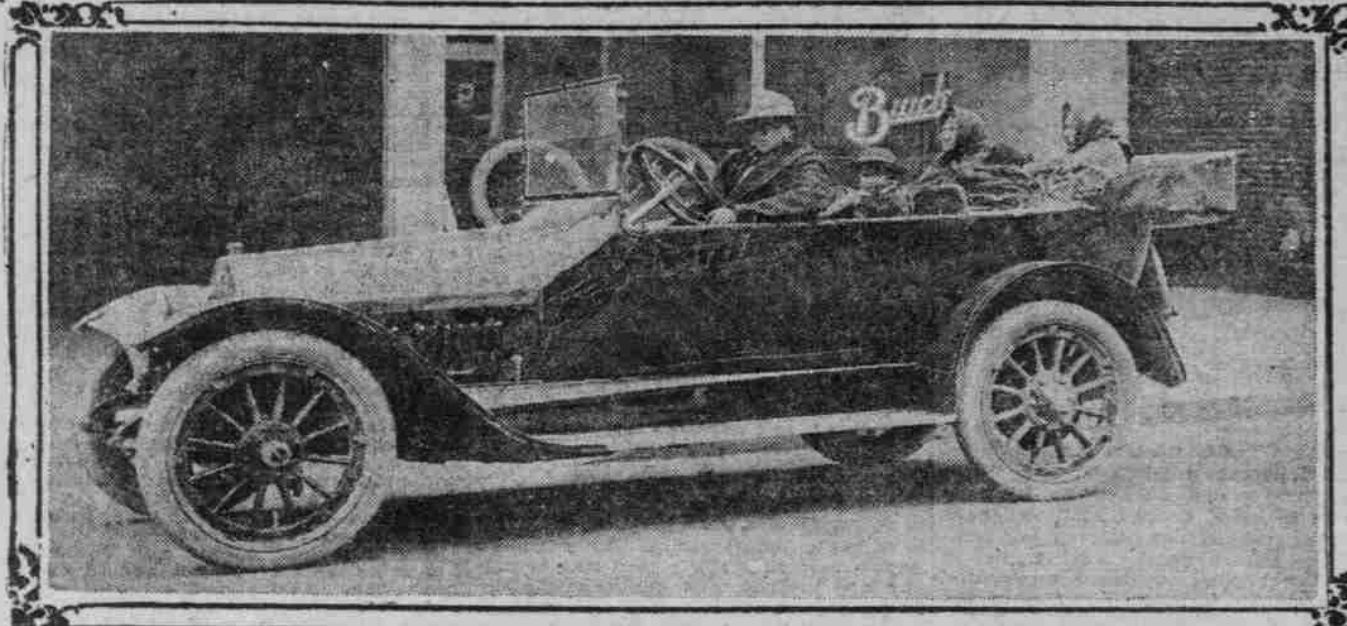
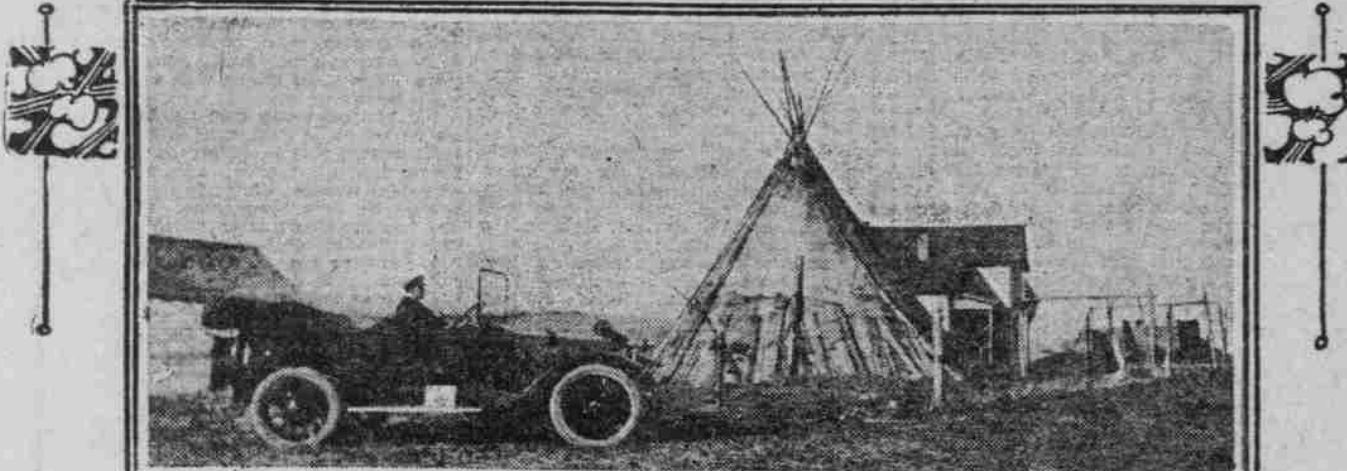


INDIAN FARMER USES AUTO ON WHEAT RANCH WITH MODERN HOME

Car That Other Salesmen Mentioned Is Chosen by Purchaser, Ignorant of Automobile Values—Lands Are Rented Out and Family Rests After Year of Bumper Crops.



Thomas Scheell, Full-Blooded Umatilla Indian, in His New Buick Six



Wigwam Back of Scheell's House

"NIKA Tiká Míka Hyak Klatawa Kíoshe Illíhes Kopsa Nika Píah Chích Chích?" This is about what Thomas Scheell, a full-blooded Umatilla Indian, says when he invites his friends to take a lightning-fast ride with him out over the attractive Eastern Oregon country in his "fire wagon."



Scheell's Home Near Cayuse Station

Scheell is not actively engaged in farming this year, having rented his property to a white man. Wheat land in Umatilla County, which is said to produce more than 1 per cent of the world's crop, is this year bringing remarkable cash rents.

TIMBER SALE PLAN TO REPAY ROAD LOAN

Proposed Use of Forest Reserve Is Outlined to Club at Albany. Campaign to be launched.

CAMPAIN TO BE LAUNCHED

Enactment Into Law by Congress to Be Urged on Oregon Delegation That Funds May Be Had for Highway Work.

ALBANY, Or., April 17.—(Special.)—How Oregon counties may secure money for road building without issuance of bonds or the payment of interest has been explained to the Albany Commercial Club by representatives of the United States Forest Service.

owner of timber land in such region, is holding the timber, not in order to make a profit later by the advance in value, but in order to make it promote public welfare.

Howard E. Coffin, vice-president and chief designer of the Hudson Motor Car Company, once in a while rides in the first automobile he ever built.

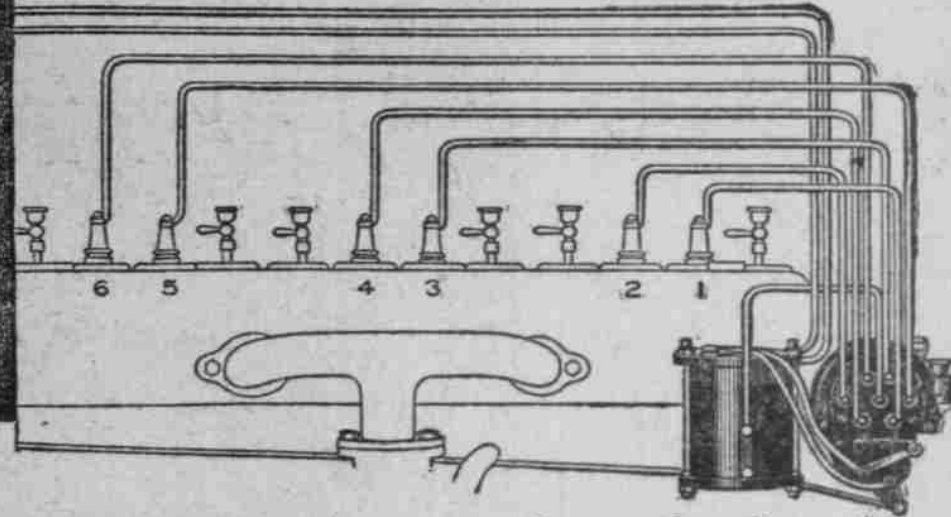
Howard E. Coffin, vice-president and chief designer of the Hudson Motor Car Company, once in a while rides in the first automobile he ever built.

The speed kings of the Pacific northwest, Jim Parsons, Charles Latta, Percy Barnes, Harry D. Stratton, Ernest Schneider, Fred Barney, Cliff MacBeth and Billy Wallace, have announced they will drive at the coming auto race meet at the Rose City Speedway.

Howard E. Coffin, vice-president and chief designer of the Hudson Motor Car Company, once in a while rides in the first automobile he ever built.

Howard E. Coffin, vice-president and chief designer of the Hudson Motor Car Company, once in a while rides in the first automobile he ever built.

How Studebaker cars are built—Ignition



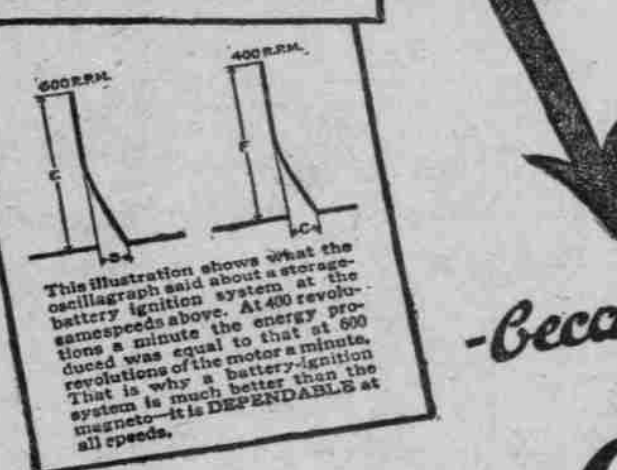
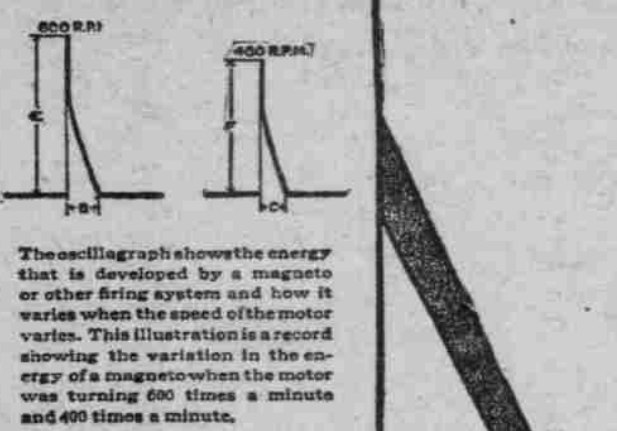
SURE steady firing at any speed

Magneto? No, sir! Better than that—the Studebaker-Wagner Electric System that's built to order for Studebaker Cars. Lots of cars, of course, are still using magnetos. But study of the leading cars at the Auto Shows disclosed that more than 52% of the high-grade cars are using a battery-ignition system.

And the reason is simply that electric-system ignition is better than the magneto. When the motor is turning fast, the magneto is satisfactory. But the minute you slow up on a grade or in city traffic the energy developed by the magneto weakens—and that is just when you need ignition energy most.

For when the motor is running at low speeds and the charge is highly compressed, it takes a hotter spark to fire it. And that's why Studebaker is using this battery-ignition system, which is not only simpler but MORE RELIABLE, because it insures maximum voltage at low speeds as well as at high speeds.

It guarantees SURE, steady firing. For the storage battery is ready to deliver the maximum voltage at all times. The motor doesn't skip or miss at low speed. And it PULLS steadily and tenaciously ALL the time the car is moving. Guarantees the CERTAINTY of operation that a man looks for in this car



-Because it's a Studebaker

But why not come in and look over this Studebaker ignition system on the car itself. Like to show you the simple wiring system and all the details. Like to have you see the car, too, and know the convenience and the COMFORT and the safety that's built into it. And we'll gladly arrange for any kind of tests you like—hills, roughest roads, anything. Will you phone us? Or if you can't come in, write for our booklet on the Studebaker Electric System.

Studebaker Features Electric Lighting and Starting—Full Fleeting Rear Axle—Timken Bearings—Safety Tread Rear Tires—One-man Type Studebaker ROADSTER, \$ 695 Studebaker FOUR, \$ 885 Studebaker LIGHT SIX, \$ 985 Studebaker SIX 7, passenger, 1450 P.O.B. Detroit

The Oregon Motor Car Co. Portland Dealers.

Chapman at Alder Street. Phones, Main 9402; A 7656.

SPEED KINGS COMING

Best Drivers to Compete in Portland Meet May 1-2.

LOCAL CARS ARE STRIPPED

Interest in Approaching Races Growing and Large Number of Machines Are Expected—New Records May Be Made.

The speed kings of the Pacific northwest, Jim Parsons, Charles Latta, Percy Barnes, Harry D. Stratton, Ernest Schneider, Fred Barney, Cliff MacBeth and Billy Wallace, have announced they will drive at the coming auto race meet at the Rose City Speedway.

The racing of May 1-2 will be the first in Portland inter-city racing ever held in this city, and some of the fastest cars in the Pacific Northwest will be entered.

driven by that capable little race pilot, Charles Latta, the Romano will be sent after new world's records Saturday, May 1. There are other cars coming here whose owners say are as fast, if not faster, than Romano's car.

"Best Driver Will Win." Robert A. Hillier, manager of the Northwest Automobile Association, does not wish the coming meet to be confounded with team racing or hippodrome affairs, but says that in every event the best machine and the best driver will win.

PORTLAND WOMAN INVENTS COLLAAPSIBLE TABLE THAT SEATS EIGHT.



Design Perfected by Miss Maria C. Cavalline. It has remained for Miss Maria C. Cavalline, an enthusiastic Portland autoist, who resides at 452 Morrison street, to invent what is said to be the smallest collapsible dinner table on the market that will seat eight people.

TRIP TO LAKEVIEW MADE

PARTY IN TRUCK DECLARES ROADS IN CENTRAL OREGON AT BEST. Start From The Dalles Is in Heavy Rain and Mud Prevails Until Miller's Bridge Is Reached.

REPRESENTATIVE FROM KING FACTORY TO COVER WHOLE OREGON TERRITORY.



E. G. Bernthal. During the coming fortnight E. G. Bernthal, Western representative of the King Motor Car Company, who has been making his temporary headquarters in Portland for the past 30 days, will cover the Oregon territory in company with Fred W. West, manager of the Geringer Motor Car Company. King agents for this territory.