

RIVERVIEW ABBEY

A COMMUNITY MAUSOLEUM, A MANSION FOR THE DEAD

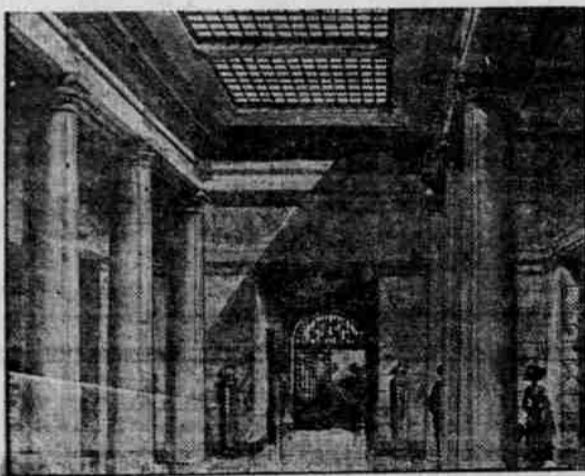
Will be built this season at a cost of \$150,000 on a beautiful eminence in Greenwood, adjacent to Riverview Cemetery, and overlooking the Willamette Valley and surrounding hills and mountains—Non-sectarian, absolutely and exclusively limited to the Caucasian race.

Where Shall I Be Buried?

One Hundred and Fifty American Towns and Cities have built Community Mausoleums, in which they are laying away their dead in snow-white tombs, where neither the ghoul, nor mud, mold and decay, nor the careless and indifferent can disturb, desecrate, defile or destroy.

These Mansions for the Dead are fitting memorials and tributes of a great nation or state, and nothing short of this last gift and token to the memory of departed citizens is becoming to a great people.

Arrangements are completed for the erection of a Community Mausoleum for the citizens of Portland to hold not less than 1000 tombs and family compartments. The Portland Mausoleum Company, 214 Spalding building, owns the rights for the erection of Sanitary Mausoleums and is arranging to erect such buildings throughout the State of Oregon. Tombs are being sold at Salem, Eugene, Medford and Ashland, and approving inquiries are being made daily by the people of Portland. In fact bodies are already in waiting for the completion of the Mausoleum in Greenwood Cemetery.



THE CHAPEL.

The structure for Portland will be a reproduction of the Mausoleum just being completed at Buffalo, New York, which is noted for its massive quality and classic beauty. It includes large and beautiful chapel accommodations, spacious corridors, marble floors, magnificent column effects, and very artistic interior decorations. Its exterior is plain, but gracefully relieved from any severeness of extremes either way. Its foundations are sufficient for a building 10 times its height, while its reinforced concrete skeleton framework, its roof, walls, doors and windows, are made of indestructible material—so bound together that it is spoken of as a one-piece building.

The question of strength, durability, sanitation, fitness and desirability of Community Mausoleums, under the patents, plans and specifications of the Portland Mausoleum Company, have been settled by the highest authorities, and this method of entombment has been accepted as rapidly as its claims could be presented to the people and buildings erected. A glance into one of its snow-white stone tombs answers the question "Where shall I be buried?" and in every instance the answer will be, "Here."

The last loving service you can bestow upon your dead is to provide for them a "final resting-place" which will, in every detail, reflect the same solicitude you felt for them in life.

What an inspiration it is to know that their bodies rest in peace in the dry, sheltered from every suggestion of neglect, indifference and desecration and what a tribute this fact is to your affection for them!

How resigned the aged are, and how more sublimely reconciled the young are, when facing death, if they know their bodies are to escape the horrors and the tragedy of the grave!

And when laid away in the tomb, how pleasing it is to the living relatives and friends that they can give frequent expressions of their love and esteem at the portals of a tomb which always reflects the highest tribute of affection!

Memorials cut in stone and shaped in metal, as old as the pyramids, testify to the loving tenderness of civilizations known to us today only through the stone tombs, in which their dead were sealed and guarded through the ages by stone tombs set above ground in solid masonry.

In accordance with this old method of assembling seamless tombs in large numbers, with no effort at vain extravagance, a Community Mausoleum will be erected on firm foundations, on a beautiful site, overlooking River View Cemetery, and will contain 1000 single tombs, many family compartments and sections, and clusters of tombs, providing any variety of pleasing ways to reserve space of two, three, four, five, eight, 10 or 15 tombs in groups, or in rooms especially built for giving modest publicity, or positive exclusiveness to entire families, as may be desired.

Tombs Must Be Subscribed For Before Building Begins

The number of tombs and family compartments will be limited to the number subscribed for. No tombs will be for sale when the building is completed. Those only who give our agents a hearing and subscribe will be accommodated. The officers of the company will fully satisfy all who care to investigate every detail of plans and specifications in order to give absolute assurance of the indestructibility of the tombs and building.

The company invests its money first. The company asks for no money when you subscribe, but gives the advantages of payments within the reach of all, and then only at certain stages of the construction work—One-Third of the amount subscribed for when the big floor of the Mausoleum is in. The Second One-Third when construction work is advanced to the roof, and the Remaining One-Third when the Mausoleum is completed, and at this time the deeds for tombs are delivered. Hence all who want tombs must subscribe for them either through our agents or by calling at our office, 214 Spalding building.

How Shall I Dispose of My Body?

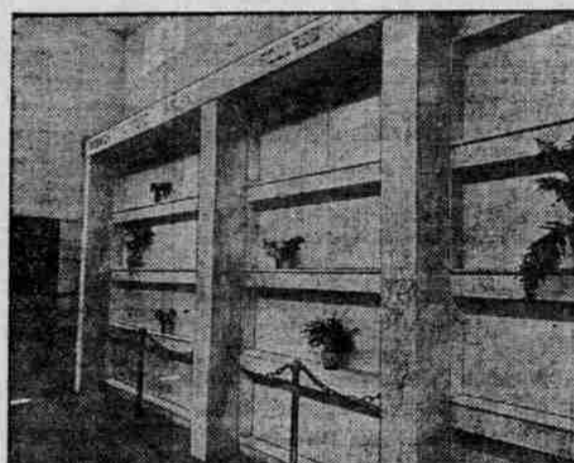
Shall I Determine, or Leave It to Others?

When Shall I Settle This Question?

Why Should I Evade or Shun the Thought or Duty?

Why Should I Hesitate to Do What Has to Be Done for Me, if I Neglect to Do It for Myself?

Isn't it the horror of the grave, or the dread of cremation, or the hope that death will relieve you of the necessity of making this provision? Is this rational? Is it paternal, fraternal or religious conduct? Is it the part of wise men?



FAMILY SECTIONS.

True, a grave can be dug in a day, the body can easily be lost in the white hot furnace in a single hour, but do either of these satisfy the demands of affection, the dictates of conscience, the tenderness of soul that reaches back to those you leave, or follows after those who leave you?

A stone tomb cannot be built in a day. In order to possess it you must provide it when you need it least, that you may be sure of it when you need it most.

Mausoleum Burial hitherto has been only within the reach of Wealthy Families. Until the inventions which make the Community Mausoleum possible, the minimum cost of such entombment was \$1000 for each single tomb, and this does not include endowment which provides for maintenance. Tombs, better built, sanitary and connected with large chapel accommodations and other advantages, heavily endowed and always maintained, cost in the Community Mausoleum \$200 and \$250 each.

The Endowment Fund will be ample to care for and maintain the Mausoleum. No lots to buy, no tombstones or monuments to provide, no curbs to set, no grades or walks to maintain, no graves to be dug and no exposure of family and friends in attendance at funerals—all within doors, and the consoling reflection that your dead are in the dry, housed as they were in life, with a living memorial, facing the marble corridor, on which your family name will outlive all other family records.

Dr. Mendel Silber says: "Our present mode of human burial is such that one must shudder and shiver at the very thought of dying."

"With that dismal, damp, dark hole in the ground as a 'last resting-place,' with the positive certainty

that this 'last resting-place' permits of no rest, because of snakes and worms and the elements of Nature, who can help being sickened by the mere thought of the grave?

"We no longer rend our garments, nor don sackcloth, nor cover our heads with ashes, nor shave our hair, nor fast, nor go barefoot, nor do we hire professional wailing women to sing dirges; nor do we make incisions in our flesh, nor offer the dead locks of our hair or drops of our blood as-ancient peoples once did."

"But we do still put our loved ones in dark, dismal holes in the earth—to be fed upon by the elements and the lower forms of life, and, Dr. Silber asks:

"Who can contemplate the awful sacrifices our present mode of burial entails without realizing the enormity of these vital facts?"

"Human health is threatened wherever there is a cemetery. Thousands of human beings are taken every year by the poisons given back by polluted burial lots, not only to the waters under the earth, but to the air above it; and in one or both ways the present burial practice is a constant and increasing menace to the living. Epidemics of typhoid fever and other malignant diseases, and the propagation of deadly bacteria spreading cholera, diphtheria, meningitis, and any number of milder disorders which afflict humanity, are easily traceable to this source.

"Face to Face With These Astounding Scientific Facts, is it not passing strange that the present mode of earth burial, accompanied as it always is by so harrowing and horrible a feeling, so great danger to the health and life of the people that it should be tolerated at all in this age of Sanitation and Science?"

The more strange and inexcusable, because there is a vastly more rational, sanitary and tender way of disposing of the dead—not cremation, for this has its horrors; not through the Silent Tower, for this seems fiendish; not the deep sea, for this is more heartless than the grave.

None of these meet the demands of Love and Affection.

Entombment in the Snow-White Apartments of a Sanitary Community Mausoleum is the most satisfying solution of the question.

Advantage of First Subscribers

Subscriptions for Tombs will begin at 9 o'clock Monday morning at the company's office, 214 Spalding building, and the canvass by the company's agents will continue until the required number of tombs are sold. The date and hour of each signature to the subscription is recorded on each contract, and in this order subscribers will be admitted to the building when completed to select the tombs subscribed for. So that First Subscribers will be the First to make Selections of Tombs, and this is an advantage of great importance to tomb buyers. No Money is required when subscriptions are taken, and the First Subscriber pays no sooner than does the Last Subscriber—One-Third of the Sum when the foundation of the Mausoleum is in. The Second One-Third when the tomb and wall structure is up to the roof and the Remaining One-Third when the building is completed, covering a period of a year or more.

PORTLAND MAUSOLEUM CO.
214 Spalding Bldg., Portland, Or.

Please mail to my address your booklet descriptive of Portland Mausoleum and method of Entombment.

Name

Address

PORTLAND MAUSOLEUM COMPANY

214 Spalding Building

JOHN S. BRADLEY, President
J. M. LEITER, Vice-President
JOHN BAIN, Sec. and Treas.

Directors { JOHN S. BRADLEY, J. M. LEITER,
G. F. OUTHBERT, WM. A. MACRAE

AN ARTISTIC BOOKLET ON APPLICATION
Upon application the Portland Mausoleum Company will mail you an artistic booklet which will give an elaborate description of this method of entombment and accurately shows the extent of its endorsement throughout the States and Canada. The coupon attached should be enclosed with your letter.