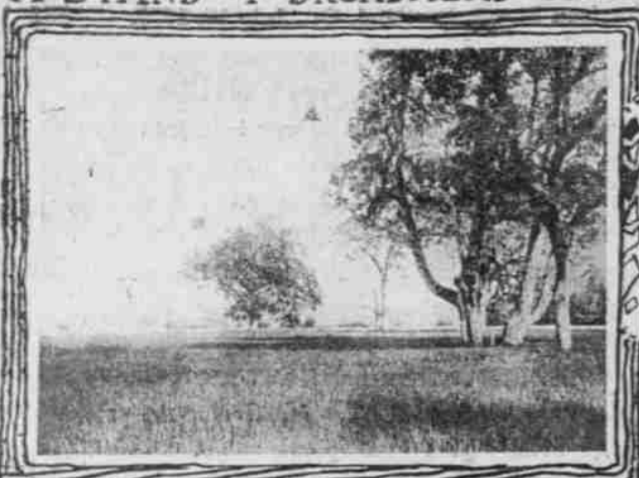


BROADMEAD THE GREAT!

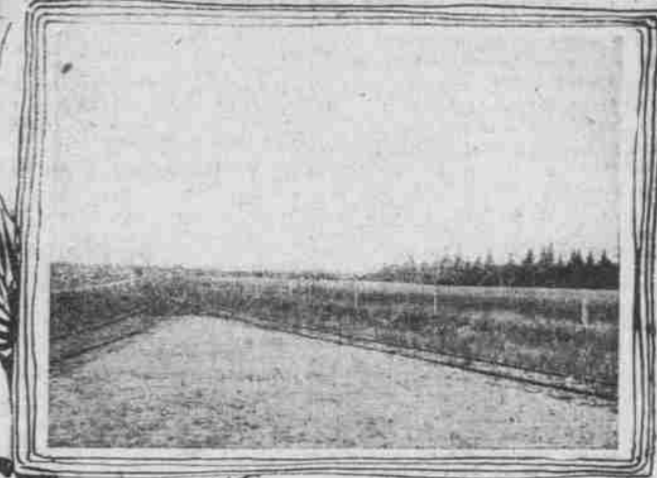
A STAND OF BROADMEAD OATS



WAREHOUSES NORTH OF TOWNSITE



BROADMEAD TOWNSITE BEFORE BUILDING OPERATIONS STARTED



Send for a copy of our specially and officially prepared map of the Willamette Valley. It gives an accurate reproduction of the topography of the country and also includes all of the railroads, railroad points, small towns and rivers. It is complete to the minutest detail. 25c the copy.

Colonel J. C. Cooper's famous book, "The Yamhill," is a romantic tale of Indian life at an early period. The book is replete with thrilling and realistic climaxes. The plot is laid in the Willamette Valley, and a great deal of the action of the story occurs on the famous Broadmead farm. A special edition of this brightly entertaining book for sale at our offices at 25c each.

Why Broadmead in the Next Three Months Will Develop Into the Greatest of Great Intensive Farming Sections

Who has not heard of Broadmead, Ladd & Reed's famous farm, situated in Yamhill County, on Dallas and Sheridan branch of the S. P.? Broadmead is in the most fertile section of the most fertile valley in Western Oregon. It is the kind of land that any farmer anywhere in the United States will take his hat off to. IT'S GREAT! Ten acres of the high land or as many of the bottom land is a fine investment for any man—for you. Your future may depend upon your investment in BROADMEAD.

A FEW ACRES AND LIBERTY. Did you ever stop to think that intensive farming on 5, 10 or 20 acres does all the work himself; he has no monthly pay-roll; he is situated in a closely built up community; he is near churches and schools; his neighbors are close by; his market is good, and easy of access; his income is regular, sure and remarkably big. He's a free man in a free land, with an income large enough to buy luxuries for his family. Do you want to be that man? THEN SEE BROADMEAD.

BROADMEAD ENTERING AN ERA OF DEVELOPMENT. The wonderful interest shown and the money-making opportunities at Broadmead. The abundant pure water supply and the many natural resources and the immense sums of money that have already been expended in developing the property.

TALK WITH THE MAN ON THE GROUND. Talk with the man who has yearly marketed his fruit or him tell you of the productiveness of the soil, the healthful climate, the great Broadmead section. Let the money-making opportunities at Broadmead. See for yourself the cheapest land in the state, considering the many natural resources and the immense sums of money that have already been expended in developing the property.

BROADMEAD AS AN INVESTMENT. Broadmead from the investor's standpoint is full of opportunity. The fact that Broadmead is today producing its full share of the world's wealth is conclusive proof of its future rise in value under intensive systems of farming. Broadmead is a garden spot of fertility, and at from \$100 to \$200 per acre a ten-acre tract becomes better than a gold bond investment.

Nine-tenths of the area of Broadmead is now under cultivation—place your crop in the ground and the harvest leaps forth. There's no stump grubbing, no unnecessary preliminary work before the ground receives its crop. On all sides, at the present time, high production is seen, large plantings of fruit trees, great stretches of clover, magnificent fields of wheat, rye and oats, orchard upon orchard, acre upon acre, field upon field.

From the farmer's standpoint Broadmead has yet to find an equal. It is an investment that will pay for itself every year that it is worked. Many instances might be given of large yields and fancy prices—\$450 worth of strawberries per acre—\$250 worth of loganberries from three-fourths of an acre—\$210 worth of onion sets from three acres—75 bushels of oats per acre, and so on. These examples are common, and Broadmead stands ready to duplicate and even exceed them.

From a 10-acre tract a man may expect to get a yield of a one-year crop in sufficient abundance to pay for the land, thus with proper attention two acres of Broadmead set to strawberries may be easily made to return \$500 in clear profit in one year.

It is not at all uncommon to produce 10,000 pounds of fruit to the acre. Among the vegetables there is a remarkably surprising variety, from which the returns are large in one year: potatoes, celery, asparagus, cabbage, turnips, peas, beans, tomatoes, beets, parsnips, radishes, lettuce, green onions, cauliflower and melons, all of these are one-year crops and the immediate returns are heavy and certain. Potatoes yield as heavily as 800 bushels to the acre and sell for not less than \$1 per 100 pounds.

In point of quality and abundance of crops Broadmead challenges the world.

BROADMEAD'S WATER SUPPLY IS ABUNDANT. Water has been flowing from numerous wells on all parts of the farm for many years.

RAILROAD FACILITIES. The junction of the Dallas and the Sheridan branches of the Southern Pacific affording easy access to the markets of Portland, Oregon's metropolis. The projected McMinnville branch of the Oregon Electric line to Corvallis runs through the townsite.

CONFIDENCE IN BROADMEAD'S FUTURE IS SHOWN BY THE NUMBER OF SUBSTANTIAL BUSINESS ESTABLISHMENTS MOVING INTO THE NEW TOWNSITE. Mr. G. W. Little, formerly president and manager of the Oregon Planing Mill Co., of Denver, Colo., has purchased tract No. 59 at \$200 per acre. Mr. Little will erect a planing mill on lots 6 and 7, in block 7. His home will be built on lot 8, block 9, in the town of Broadmead. Mr. Little's son has purchased lot 2, in block 2, and will erect his home thereon. Peterson Bros., of McMinnville, have built their general store, building on lot 2, block 10, on Main street. They are now moving their \$10,000 general merchandise stock from McMinnville to Broadmead. Directly adjoining this store, a restaurant has been built, and is now fully established and in running order. A lodging-house will be conducted in connection therewith. Adolph Hoag will immediately erect and fully equip a barber shop. J. J. Curtis, formerly of Lexington, Kentucky, is now erecting his Broadmead home in the townsite, and it is his opinion that Broadmead far outstrips Kentucky's most fertile sections.

FREE TOWN LOT

Building the town of Broadmead has been subordinated in our plans to the sale of farm tracts. The town will build itself if we give it a start in the right direction. We are doing that by offering to any one who makes a deposit of 10 per cent of the price of any 10-acre tract a town lot FREE.

This extraordinary offer is only available up to and including Saturday, July 31st, the opening day.

SPECIAL TRAIN

All aboard Saturday morning, July 31st, at 8:00. A special Southern Pacific train will leave the Jefferson-street depot Saturday morning, July 31st, at 8:00 o'clock. There will be a crowd on hand, but there will be plenty of room for everybody. Don't miss this personally conducted excursion. It's up to you; you'll regret it for a lifetime if you aren't on hand.

\$1.50 round trip. To secure this rate tickets must be purchased at our offices at any time before 6 P. M. Friday, July 30th. Remember this is a one-way fare for the round trip.

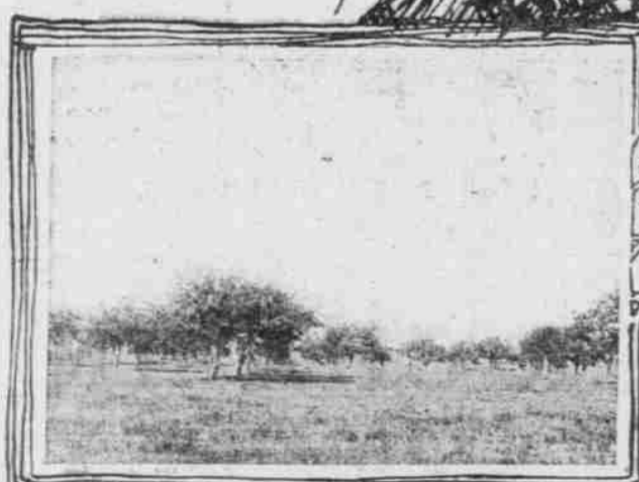
Big Barbecue, Opening Day, Saturday, July 31st. Broadmead offers free participation in a grand barbecue on its opening day. Every man, woman and child who takes the train on that day will get a free dinner and a big time.

We have prepared at a great expenditure of time and money a large and beautifully illustrated 24-page folder, printed in two colors throughout. In its class it is unique. It sets forth in detail the many advantages of Broadmead and shows various glimpses of the property by actual photograph. A careful reading of this folder will give you a pretty clear idea of the property. A copy will be mailed to your address upon request.

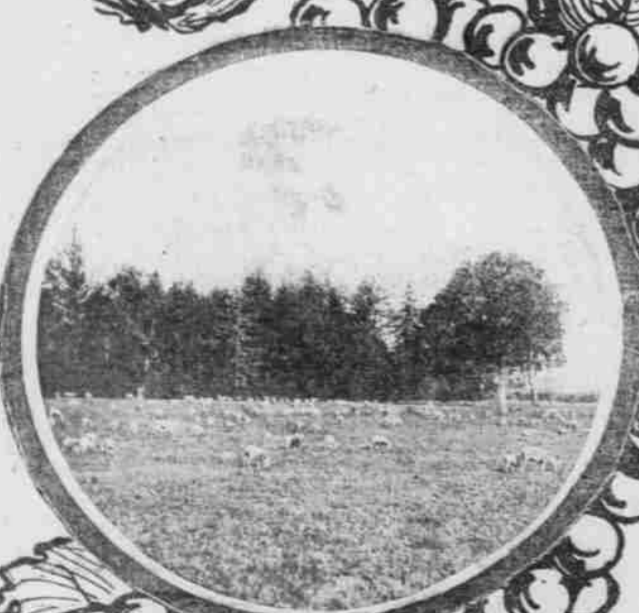
Columbia Trust Company
Board of Trade Building
PORTLAND OREGON

COLUMBIA TRUST COMPANY,
84 Fourth Street, Portland, Oregon:
Please mail me a copy of your Broadmead folder.
Name
Address

DAIRYING ON BROADMEAD



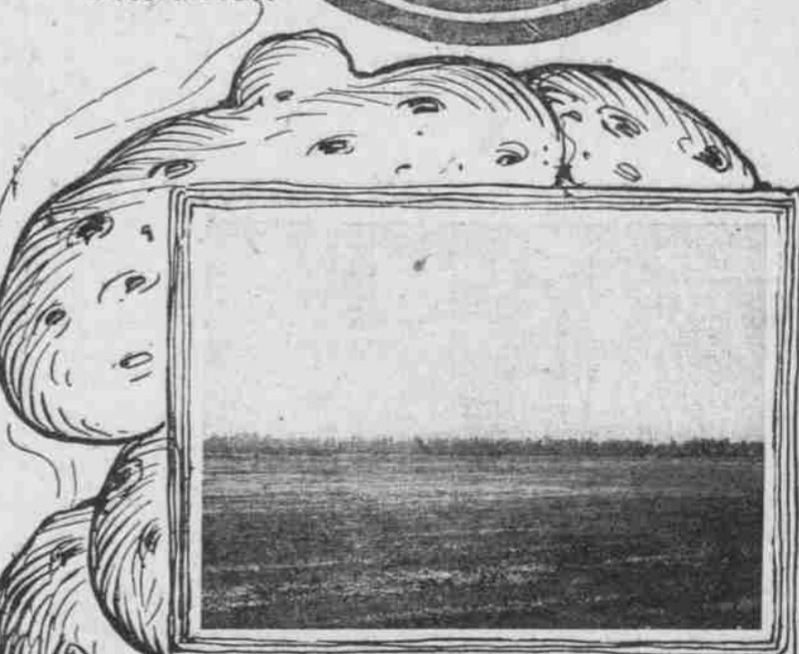
A BROADMEAD ORCHARD



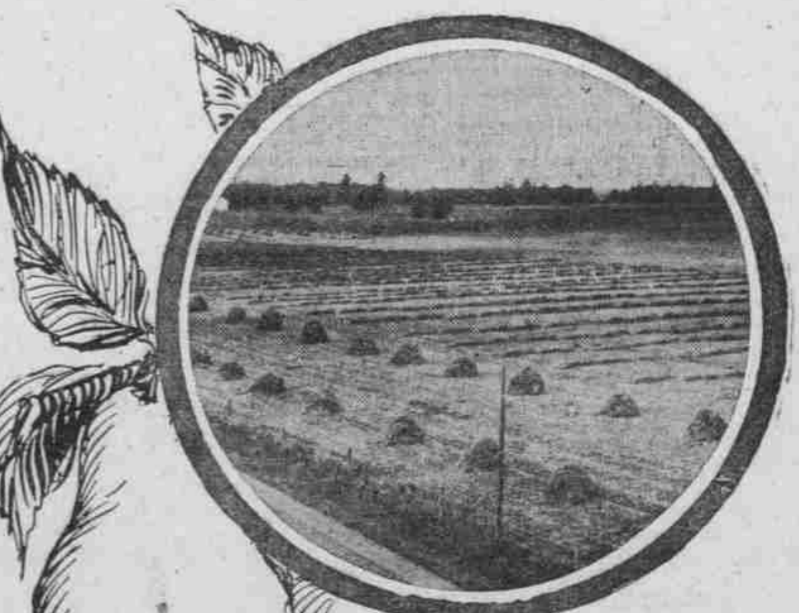
BROADMEAD PASTURE



FARMING ON BROADMEAD



PRODUCTIVE BROADMEAD BOTTOM LAND



BROADMEAD CLOVER



BROADMEAD