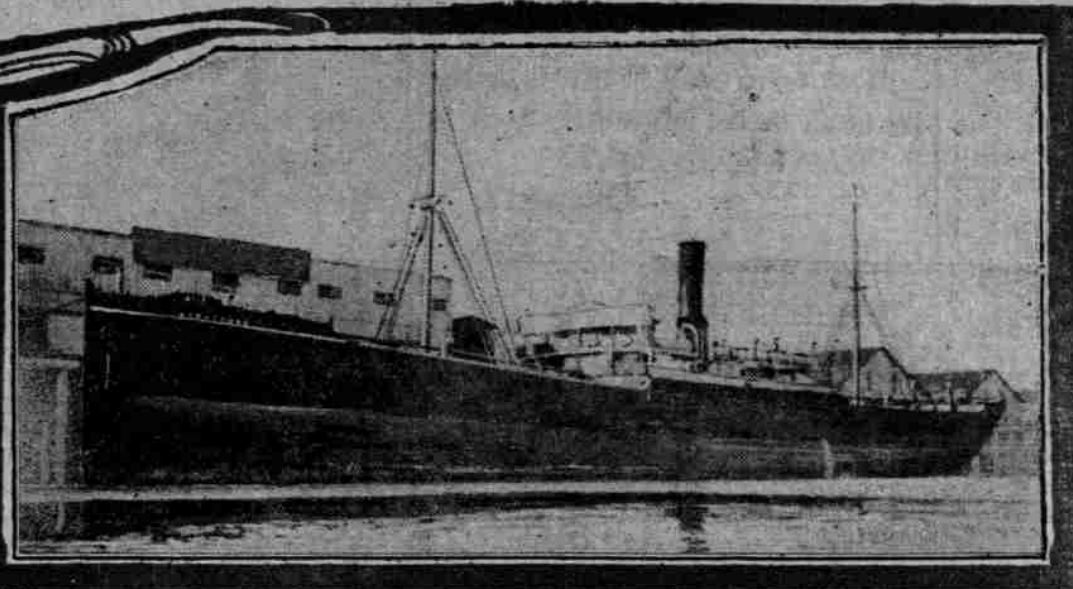
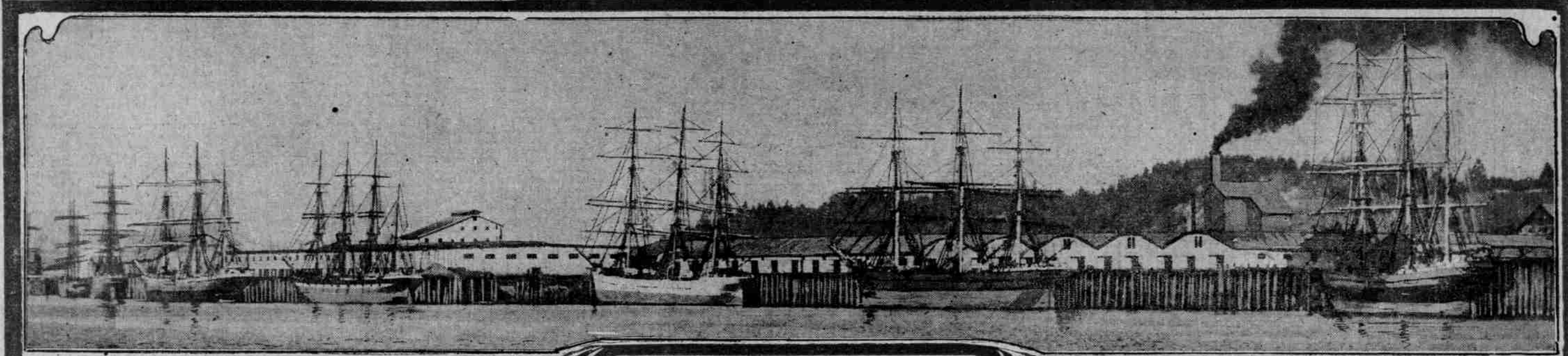


MANCHESTER PORT. BRITISH TRAMP.

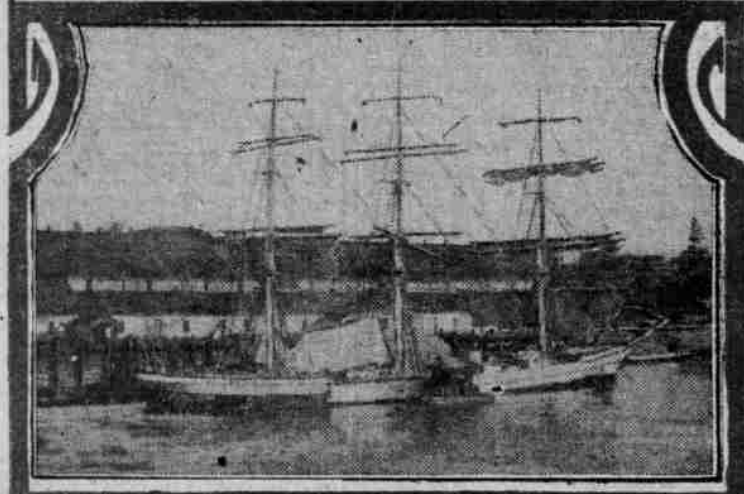
A PART OF THE
GREAT MIDWINTER
FLEET
IN
PORTLAND HARBOR
1907-8



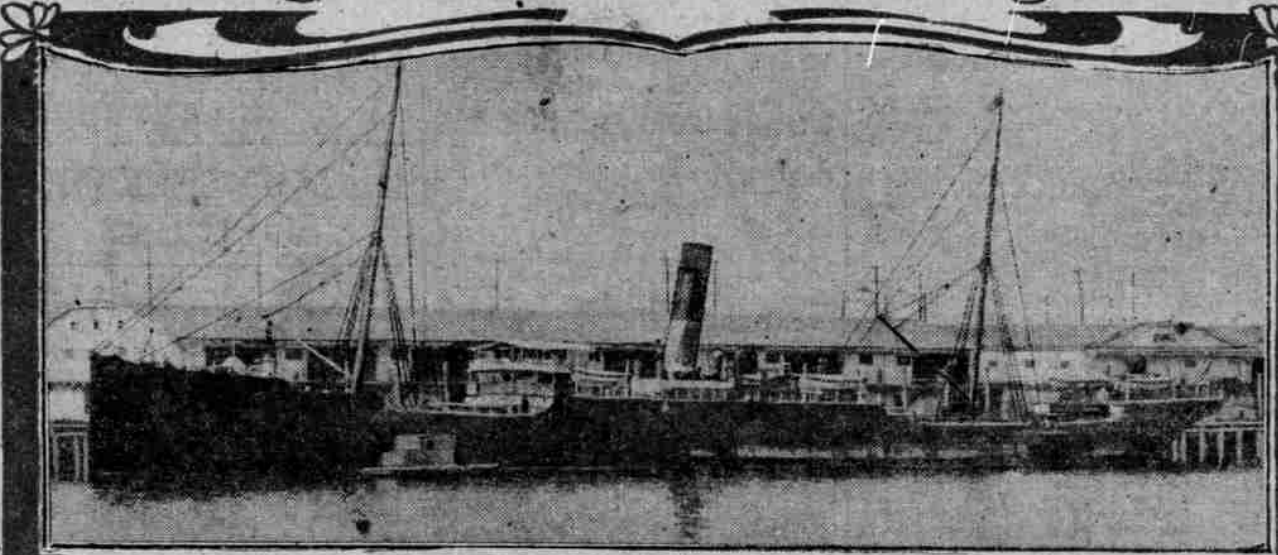
STRATHORD. BRITISH STEAMER.



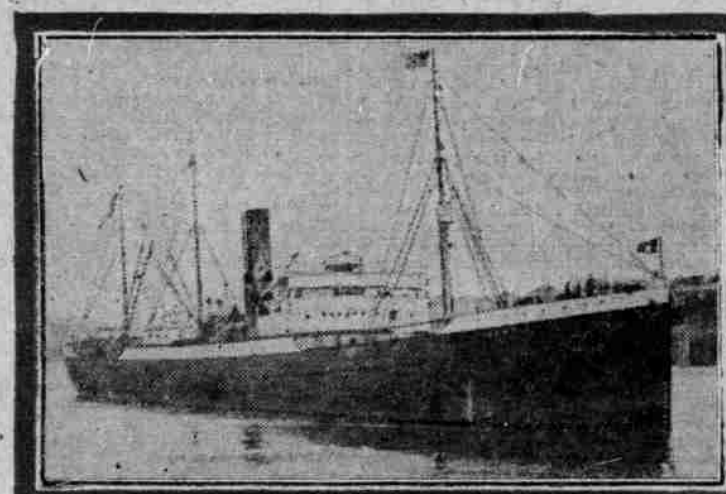
FLEET OF GRAIN CARRIERS



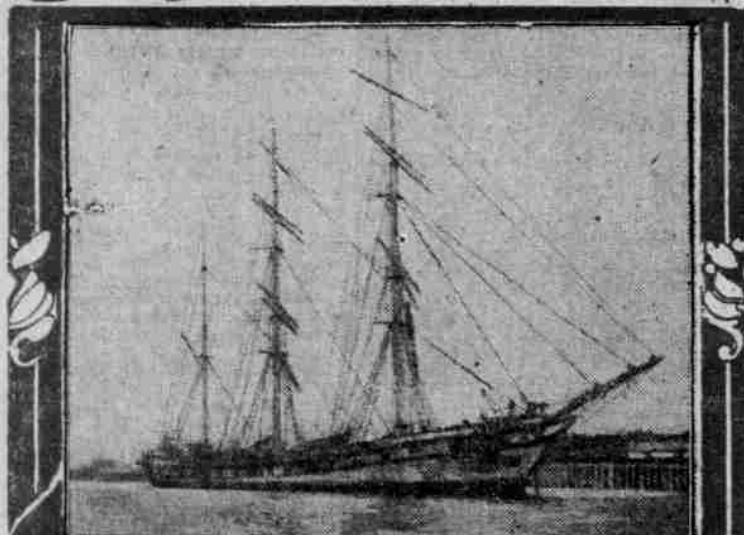
THIERS



ARAGONIA ORIENTAL LINER



NUMANTIA ORIENTAL LINER



VERSAILLES-FRENCHMAN



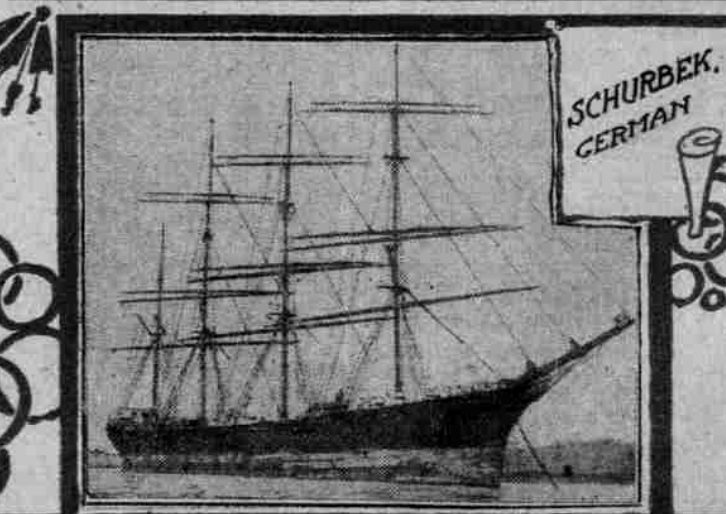
STEAMSHIP GLENSTRAE
COMO
SHIP WAVERTREE
3 GRAIN CARRIERS CAPACITY
600,000 BUSHELS



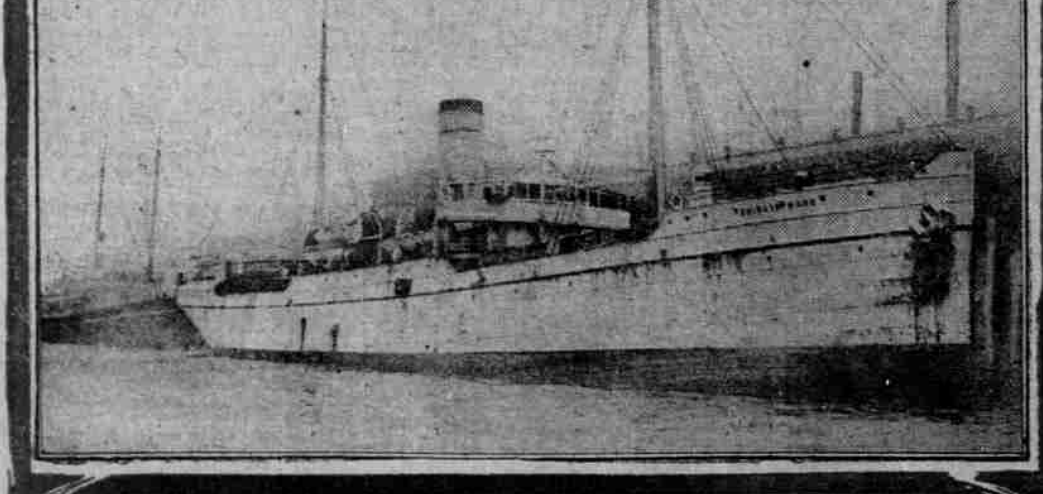
HOMeward
BOUND
AMERICAN



BRITISH
SHIP
RAJORE
READY
FOR SEA



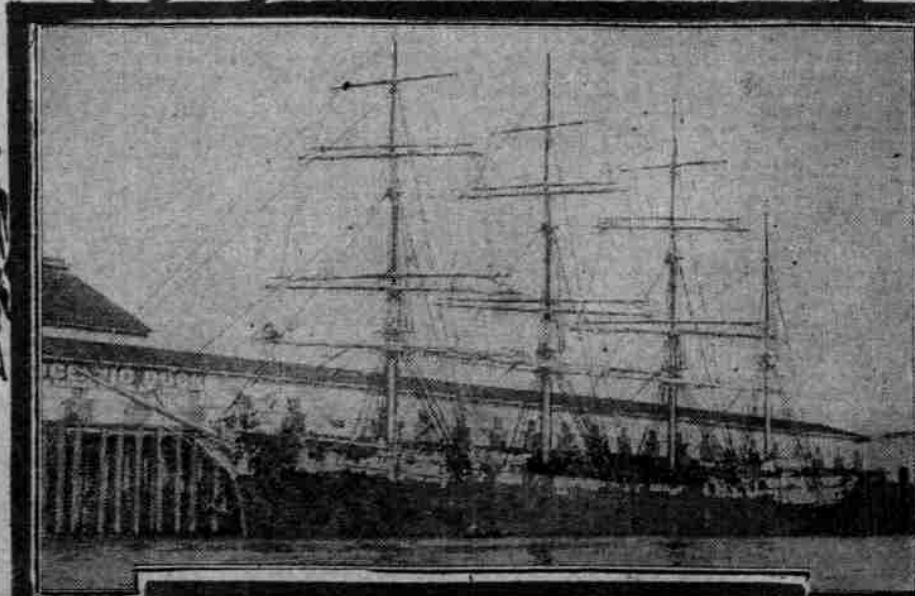
SCHURBEK,
GERMAN



SHIBATA MARU JAPANESE.



MILTONBURN.



VILLE DE MULHOUSE-FRENCHMAN