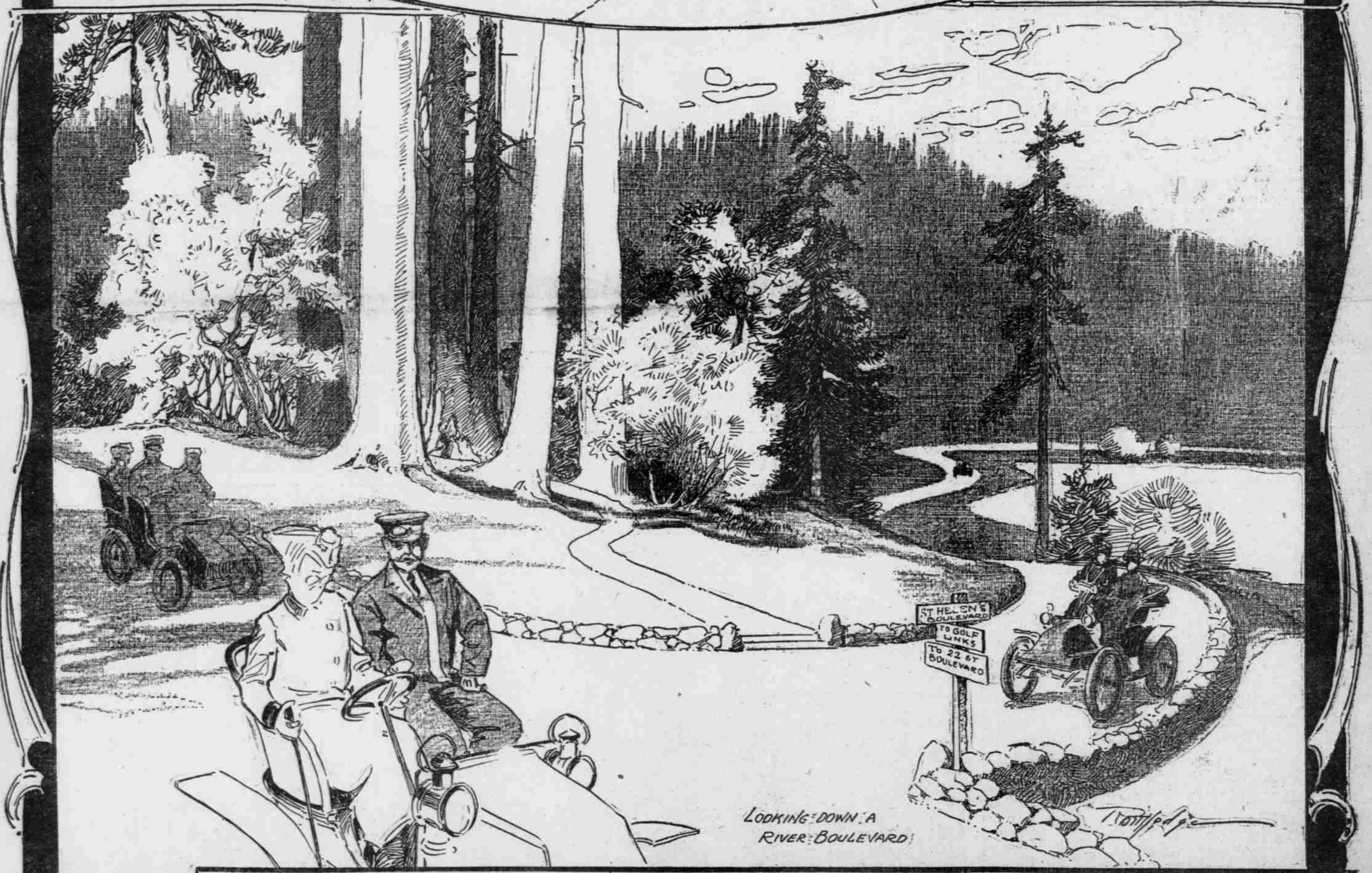
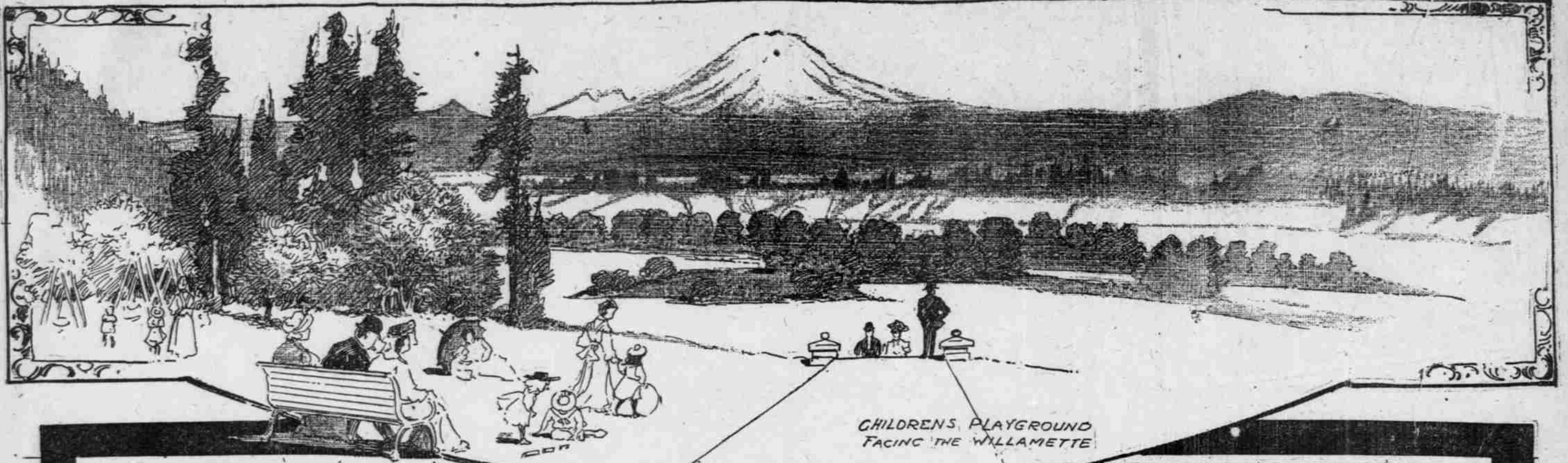


Park Scenes as Conceived by Artist F. A. Routledge

THE PARK POSSIBILITIES OF THE LEWIS AND CLARK EXPOSITION SITE

How the Four Hundred and Twenty Acres Could Be Utilized in the Future as Pleasure Grounds for the People of Portland.....



PORTLAND has the site and the ready material for a public park that need not doff its hat to the famous public parks of the world. Furthermore, a very decided sentiment in favor of a park of this description has taken hold of the public fancy, and it now seems probable that Portland is soon to include among its attractions a park whose fame will vie with the famous Golden Gate Park of San Francisco; Lincoln Park of Chicago; Fairmount Park, Philadelphia, and even with Central Park, of New York.

In the Lewis and Clark Exposition grounds unusual parking possibilities are offered. This fact has come to be fully recognized by all who have been there since the beautifying of the site for next year's Fair. Not a person has gone there in the last six months—and there have been some 50,000 visitors in that time—who has not been enraptured with the scene.

Ask the tourist what he saw and he will deal in nothing but superlatives in answering you. He will tell you without hesitation it is one of the most rarely

(Continued on Page 41.)