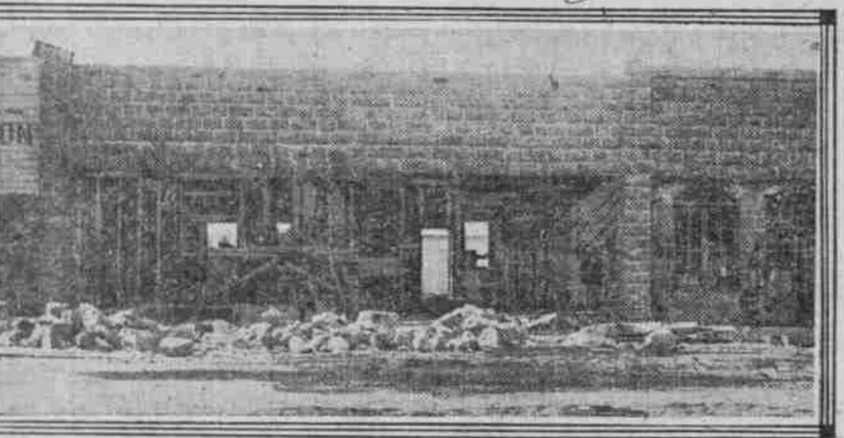


VOLCANIC-ASH ROCK OF OREGON IS VALUABLE

Great Quarry Within Few Miles of Prairie City Furnishes Durable and Fireproof, Yet Easily Worked Building Material of Good Colors.



Business Block Built of Volcanic Ash Rock 15 Years Ago



Department Store in Process of Erection



Masonic Temple Built of Volcanic Ash

THE rock quarries which for a half century or more have studied more or less critically the formation known locally as the Strawberry Range of the Blue Mountains, with its singularly beautiful valleys, laughing crystalline streams and charming scenery, are practically a unit in the opinion that it is the result of volcanic agency and that the Titanic upheaval that gave it birth is of very recent date as dates are reckoned in geologic time; so recent indeed as to have occurred within the age of man. Throughout the John Day Valley evidences of recent volcanic activity are everywhere abundant. The mantle rock at the base of the mountains is scant and narrow. In some sections it has not yet extended to the bench lands, and the hardened volcanic mud and detritus lies bare on the surface, while everywhere in the mountainous and hilly sections the exposed rocks are yet sharp and jagged, as though the mighty forces that thrust them vertically through the earth's crust had operated but yesterday.

MEN OF NAVY ACCUSED

SOCIALISTS SAY RIOT WAS PLANNED AHEAD SHIPS. Seattle Resolutions Say Man in Uniform of Army Major Encouraged Work of Destruction. SEATTLE, Aug. 3.—A mass meeting of the moderate Socialists, whose headquarters were destroyed by rioting in the city, today adopted resolutions demanding a Congressional investigation of the riot. The speakers were gentle in their criticism of Secretary of the Navy Daniels. The resolutions say that at a most propitious moment from the standpoint of the reactionaries, the Secretary of the Navy, Josephus Daniels, delivered a tactless, impetuous and hellacious attack upon the red flag and all those who believe in the principles it symbolizes, thus lending the color of official approbation to the work of arson in which almost immediately followed.

PRUNE TREES SPLITTING

Great Fruit Harvest Predicted in Polk County. RICKREALL, Or., Aug. 3.—(Special.)—Owing to the size and quantity of the prunes in Polk County's orchards, many trees have split from the weight. This is considered early for prune trees to suffer this way, but the fruit has developed wonderfully within the past two weeks. It is believed that by harvest time the prunes will be of a greater size than heretofore.

HEILIG 11th and Morrison Main 1 and A 1122 TONIGHT 8:30 ALL THIS WEEK

THE PASSING SHOW OF 1912

Opheum

GRACE CAMERON

COOLEST SPOT INTOWN

PANTAGES

LYRIC

Columbia Theater

DAILY METEOROLOGICAL REPORT.

Table with columns for Stations, State of Weather, and other meteorological data.

WEATHER CONDITIONS

Unsettled atmosphere prevail in practically all sections, although the heavy rain in the Rocky Mountains and Plains States and Mississippi Valley.

CLASSIFIED AD. RATES

Daily or Sunday. Per Line. One and two consecutive times. 20c Same ad three consecutive times. 30c Same ad six or more consecutive times. 40c

PORTLAND BUSINESS DIRECTORY

- ACCORDION PLAYING. K. Stephan, accordion, side playing, buttons covered, goods shipped. 308 Alder. M. 2073.
ASSAYERS AND ANALYSTS. MONTANA ASSAY OFFICE—Laboratory and assaying work. 180 Morrison st.
ATTORNEYS. Sargent (H. K.) & Swope (F. E.), general practice, notaries-public, 918 Ch. of Com. Bldg., Main 2112 and 2113.

WHOLESALE AND MANUFACTURERS

- DAIRY AND CREAMERY SUPPLIES. Monroe & Cressel, 125 Front. M. 440. R. 5429.
DRUGGISTS. CLARKE-WOODWARD DRUG CO., Alder at West.
ELECTRICAL SUPPLIES. FLEISCHNER BROS. & CO., 267 Ash st.
FISH, OYSTERS AND ICE. MALANKEE & CO., 149 Front street.

OREGON HUMANE SOCIETY

OFFICE NO. 320 UNION AVENUE, CORNER MARKET STREET.
Horse ambulance, 1425 B. 2515

MEETING NOTICES

HARMONY LODGE NO. 12. A. F. and A. M.—Special communication, 7:30 o'clock. Visiting brethren welcome.

DEED

HUSTED—In San Jose, Cal., July 30, Florence Husted, widow of George L. Husted, mother of George Edwin, Arthur and Barbara Husted, Florence Husted, a native of California, Florence, 5 months, 1 day, daughter of Mrs. Edwin A. Husted, of Portland, Oregon, died at her residence, 2727 East 61st st., Portland, Ore., Aug. 3, 1913.

FUNERAL NOTICES

M'DUFFEE—The funeral services of the late Susan Stearns McDufee will be held at the family residence, 973 Belmont st., at 3 P. M. today (Monday). Friends are invited to attend at the grave private.

FUNERAL DIRECTORS

MR. EDWARD HOLMAN, the leading funeral director, 239 Third street, corner Salmon. Lady assistant. A 1511, Main 307.

CITY AND FARM LOANS

Any Amount at Current Rates. JOHN E. CRONAN, 802 Spaulding Bldg., Portland, Or.

CITY & FARM LOANS

\$1000 and up at lowest rates. C. M. ZADOW, 414 Corbett Bldg., A 1414, Marshall St.

REAL ESTATE

TILLAMOOK BEACH HOTEL. Do you want a fine place in a beach hotel on the Tillamook coast? Located at Manhattan station, first stop on beach and about the best of beach hotels. Hotel already built, now open a fine chance for someone to get a profit on this beach hotel. It is getting all the crowds. Lot 50x100, front on 2nd street, on the beach, which is to be built. Better than any other hotel on Tillamook coast. Hotel Manhattan. A good 2-story place, 4000 ft. particulars, owner, 129 Front st.

BEAUTIFUL lots, Baywood Beach, 8500. Excellent view, 2 blocks to car. Call 4844.
LET THE BEST MONEY PAY FOR YOUR HOME.

3-room bungalow; bath, cabinet kitchen, excellent view; 2 blocks to car; \$2400.

4-room bungalow; fireplace, Dutch kitchen, bookcase, matured fruit trees, excellent view; 2 blocks to car; \$2400.

5-room bungalow, new oak floors, fireplace, built-in buffet, oak kitchen, Dutch kitchen, oak cement basement, full view of bay, excellent view; 2 blocks to car; \$2400.

5-room bungalow, new oak floors, fireplace, built-in buffet, oak kitchen, Dutch kitchen, oak cement basement, full view of bay, excellent view; 2 blocks to car; \$2400.

6-room bungalow, new oak floors, fireplace, built-in buffet, oak kitchen, Dutch kitchen, oak cement basement, full view of bay, excellent view; 2 blocks to car; \$2400.

7-room bungalow, new oak floors, fireplace, built-in buffet, oak kitchen, Dutch kitchen, oak cement basement, full view of bay, excellent view; 2 blocks to car; \$2400.

8-room bungalow, new oak floors, fireplace, built-in buffet, oak kitchen, Dutch kitchen, oak cement basement, full view of bay, excellent view; 2 blocks to car; \$2400.

9-room bungalow, new oak floors, fireplace, built-in buffet, oak kitchen, Dutch kitchen, oak cement basement, full view of bay, excellent view; 2 blocks to car; \$2400.

10-room bungalow, new oak floors, fireplace, built-in buffet, oak kitchen, Dutch kitchen, oak cement basement, full view of bay, excellent view; 2 blocks to car; \$2400.

11-room bungalow, new oak floors, fireplace, built-in buffet, oak kitchen, Dutch kitchen, oak cement basement, full view of bay, excellent view; 2 blocks to car; \$2400.

12-room bungalow, new oak floors, fireplace, built-in buffet, oak kitchen, Dutch kitchen, oak cement basement, full view of bay, excellent view; 2 blocks to car; \$2400.

13-room bungalow, new oak floors, fireplace, built-in buffet, oak kitchen, Dutch kitchen, oak cement basement, full view of bay, excellent view; 2 blocks to car; \$2400.

14-room bungalow, new oak floors, fireplace, built-in buffet, oak kitchen, Dutch kitchen, oak cement basement, full view of bay, excellent view; 2 blocks to car; \$2400.

15-room bungalow, new oak floors, fireplace, built-in buffet, oak kitchen, Dutch kitchen, oak cement basement, full view of bay, excellent view; 2 blocks to car; \$2400.

16-room bungalow, new oak floors, fireplace, built-in buffet, oak kitchen, Dutch kitchen, oak cement basement, full view of bay, excellent view; 2 blocks to car; \$2400.

17-room bungalow, new oak floors, fireplace, built-in buffet, oak kitchen, Dutch kitchen, oak cement basement, full view of bay, excellent view; 2 blocks to car; \$2400.

18-room bungalow, new oak floors, fireplace, built-in buffet, oak kitchen, Dutch kitchen, oak cement basement, full view of bay, excellent view; 2 blocks to car; \$2400.

19-room bungalow, new oak floors, fireplace, built-in buffet, oak kitchen, Dutch kitchen, oak cement basement, full view of bay, excellent view; 2 blocks to car; \$2400.

20-room bungalow, new oak floors, fireplace, built-in buffet, oak kitchen, Dutch kitchen, oak cement basement, full view of bay, excellent view; 2 blocks to car; \$2400.

21-room bungalow, new oak floors, fireplace, built-in buffet, oak kitchen, Dutch kitchen, oak cement basement, full view of bay, excellent view; 2 blocks to car; \$2400.

22-room bungalow, new oak floors, fireplace, built-in buffet, oak kitchen, Dutch kitchen, oak cement basement, full view of bay, excellent view; 2 blocks to car; \$2400.

23-room bungalow, new oak floors, fireplace, built-in buffet, oak kitchen, Dutch kitchen, oak cement basement, full view of bay, excellent view; 2 blocks to car; \$2400.

24-room bungalow, new oak floors, fireplace, built-in buffet, oak kitchen, Dutch kitchen, oak cement basement, full view of bay, excellent view; 2 blocks to car; \$2400.

25-room bungalow, new oak floors, fireplace, built-in buffet, oak kitchen, Dutch kitchen, oak cement basement, full view of bay, excellent view; 2 blocks to car; \$2400.

26-room bungalow, new oak floors, fireplace, built-in buffet, oak kitchen, Dutch kitchen, oak cement basement, full view of bay, excellent view; 2 blocks to car; \$2400.

27-room bungalow, new oak floors, fireplace, built-in buffet, oak kitchen, Dutch kitchen, oak cement basement, full view of bay, excellent view; 2 blocks to car; \$2400.

28-room bungalow, new oak floors, fireplace, built-in buffet, oak kitchen, Dutch kitchen, oak cement basement, full view of bay, excellent view; 2 blocks to car; \$2400.