

ARDEN EXTENSION 140 MILES LONG

Vale Is First Point Reached West of Ontario, Where Panic Stopped Work.

CONTINUATION IS EXPECTED

Terminal Point, Named After Harriman Estate in New York, Is Six Miles East of Western End of Harney Lake.

BY ADDISON BENNETT. RIVERSIDE, Malheur County, Or., Aug. 19.—Practically every newspaper reader in Oregon knows that the Harriman people are extending their present line, a branch of the Short Line, from its present western terminus at Vale, Malheur County, on the west, but just how far this extension will be constructed and how much work has been done, few know.

This road is now being extended about 140 miles, or, as the engineers say, to mile post 140, as all new work of the kind is blocked out into miles for the convenience of letting the contracts and general construction work.

Further Extension Expected. Of course, it is generally understood that this will not remain the terminus long, perhaps no longer than at any other point west of Vale, for it is thought the road will be pushed westward to Odell, and then southerly to connection with the Natron branch.

Thus far the line has run along to the north of Harney and Malheur lakes. Harriman is almost due north of the extreme western end of the latter lake, Arden is about six miles east of the western end of Harney Lake.

Maheur Lake Salt Bed. In attempting to trace out the line on the map, one will be misled unless something is known about these lakes. Maheur Lake is in no proper sense a lake, at least no such lake as is shown on the map, where it apparently covers 75 square miles.

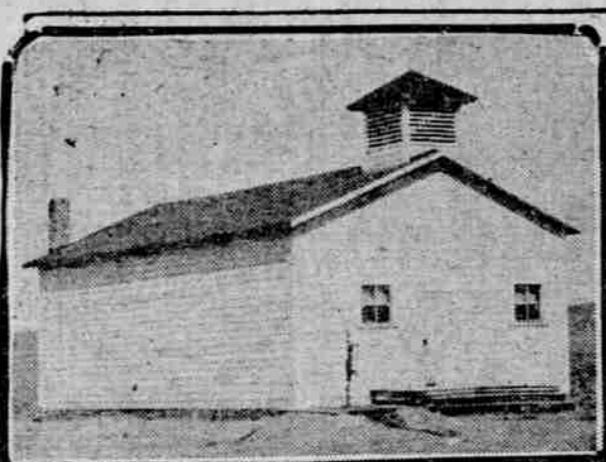
Long ago Harney Lake flowed into Malheur Lake, or they were both a part of a great inland sea, covering all of Harney Valley. At that time there was an outlet to the east, and the waters from this sea flowed into the Snake River, through the south fork of the Malheur, which leads east from the end of the lake.

Arden (Humb of 2000 Feet. The difference in the altitude between Arden and Vale is practically 2000 feet, or 2100 at Vale and 4100 at Arden. As the distance is 140 miles, it will be seen that the average grade is about 14.28 feet to the mile.

At Riverside the advance guard of the railway builders is encountered, as an engineers' camp is just being established there, the picture showing them about to reach the camping site a few rods above the store and postoffice.

No actual construction has as yet reached Riverside, but blasting may be heard down the river,

SCENES ALONG SOUTH OF RAILROAD EXTENSION IN SOUTHEASTERN OREGON.



School House At Harriman



Store At Harriman



Hot Lake, Near Harriman



Riverside, Oregon



Advance Guard Of Railroad Engineers On Way To Pitch Camp At Riverside

TWO REPORTS MADE

Majority Finds Everglades Policy Was Vacillating.

WILSON NOT ARRAIGNED

Secretary Escapes Personal Blame and Minority Holds Department Acted Wholly Within Its Legal Rights.

WASHINGTON, Aug. 19.—The Moss committee today presented to the House two reports of its investigation of the Everglades of the charges and the subsequent inquiry into the drainage division of the Department of Agriculture.

Policy Called Vacillating. Secretary Wilson escaped personal arraignment at the hands of the majority in the findings on the Everglades charges. The department's policy toward the Everglades was characterized as vacillating and "most unfortunate," as having subjected the department to much suspicion and criticism.

C.W. HOWARD NAMED

Taft Nominates Bellingham Man for Hanford's Place.

SENATOR JONES CONFERS

Recommendation Said to Have Been Made by President's Friends in State of Washington—Senior Senator Said to Agree.

OREGONIAN NEWS BUREAU, Washington, Aug. 19.—Clinton W. Howard, Bellingham, was today nominated United States District Judge for Western Washington, to succeed Judge Hanford, resigned.

BABIES MUST GO.

Two exquisite ones—a Knabe and one Lindeman Baby Grand, at bona fide reductions of \$214 and \$308, in the Reed-French Piano Co.'s closing-out sale, Sixth and Burnside streets. Pay cash or by the month.

DARROW LAWYERS LARGE DISMISSAL

Defense-Argues That Charges Have All Been Tried in Previous Case.

JUDGE TO DECIDE TODAY

Attorneys Not Interested in Issues Believe No Second Trial Will Be Had—Judge Admits He Has Opinion.

LOS ANGELES, Aug. 19.—A motion to dismiss the indictment of Clarence S. Darrow on the charge of having bribed Robert F. Bain, a McNamara juror, will be heard by Judge Hutton tomorrow afternoon.

Court to Study Authorities. Judge Hutton declared there was some foundation for the request, but he desired to look further into the authorities cited and continued the hearing until tomorrow afternoon.

Attorneys Predict Dismissal. Attorneys not interested in the case predict a dismissal of the second indictment against Darrow. They cited the action of Judge Willis in the recent hall of records dynamiting case, when the indictments against Maple and Bender were dismissed after Bert Conners' case ended in a mistrial.

DEFENSE FUND BEING RAISED

San Francisco Labor Council to Aid Defendants in Indianapolis.

SAN FRANCISCO, Aug. 19.—With the trial of Olaf A. Tveitmo, secretary of the California State Building Trades Council, Anton Johannsen, Eugene A. Clancy and 49 other prominent labor leaders who are charged with a conspiracy in the transporting of dynamite in connection with the destruction of the Los Angeles Times building, drawing near, a movement has been started to raise funds for the defense of the indicted men.

Aunt Sally's Advice to Beauty-Seekers

W. C. D. says: "My elbows are so thick-skinned, gooselimp and muddy, I can't wear dresses. What can I do to get this condition overcome? Don't use elms as props. Use the cream recommended to Minnie L. It will make your elbows quite presentable."

POSLAM BRINGS SKIN COMFORTS ALL SUMMER

In the Summer the numerous overnight uses of Poslam easily demonstrate its rare power to clear and heal affected skin.

When nothing else will start dirt You KNOW

SAPOLIO WILL DO IT

Works Without Waste CLEANS-SCOURS-POLISHES

Only 5 Days Left Take Advantage of the Closing Days of the Removal Sale Everything in the Store Sacrificed Everything Must Be Sold Sale Ends Saturday Night Lipman, Wolfe & Co. Merchandise of Merit Only..

Through August and September EXCURSION TICKETS Can be purchased for numerous dates to the East via Northern Pacific Railway

Yellowstone National Park

Gardiner Gateway is the Official Government Entrance to the Park. Thence Park coaches take guests to Mammoth Hot Springs Hotel.

ZEROLENE The Best Automobile Oil In The Handiest Can

Your Next Trip East Is Your Opportunity to Try The "OLYMPIAN" The "Milwaukee's" Superb Train Between THE PACIFIC NORTHWEST AND CHICAGO

When nothing else will start dirt You KNOW SAPOLIO WILL DO IT Works Without Waste CLEANS-SCOURS-POLISHES