

TWO STEAMERS ON RIVER IN ACCIDENTS

Todd Breaks Steering Gear and Drifts Against North Coast Bridge.

HARVEST QUEEN VESTRAYS

Superstructure of Small Carrier is Shattered by Impact—Passengers Without Delay.

Two accidents were reported on the Columbia River yesterday. The steamer W. R. Todd... The Harvest Queen, which was in charge of Captain Turner...

The Todd was a small carrier, having had a capacity for about 50 tons and operated between Pasco and Priest Rapids. Considerable freight originating here for Ringold, White Bluff, Richland and other points in that territory was handled by her on a transfer from the Open River line.

The Harvest Queen, which was in charge of Captain Turner, was damaged by a heavy fog, that was encountered by several vessels on the lower river Thursday night, and after getting into the Slough went to ground. Her passengers were transferred to a small vessel plying to Astoria and they suffered little delay.

MORE GRAIN SHIPS ENGAGED

Killarney and Galgate Will Load New Crop Cereal Here.

One addition made to the new crop grain fleet yesterday was the British bark Killarney, which was taken by the Portland Flouring Mills Company.

Another fixture announced was that of the British ship which was chartered by an old trader here. She was chartered at \$75 60, the top notch rate of the season.

ACTIVITY AMONG COASTERS

Lumber Movement for First Part of July to Be Heavy.

On the arrival of the steamer Carlos last night from San Francisco, bringing cement and general cargo, her master received orders to load lumber here and at Rainier to Portland.

HERCULES COMES FOR RAFT

Benson Plant Will Float Initial Tow of Season.

To tow the first log raft of the season to San Diego tug Hercules sailed from San Francisco late yesterday evening, and will get underway at the headquarters of the Benson Logging Company.

TROTT ON INSPECTING TOUR

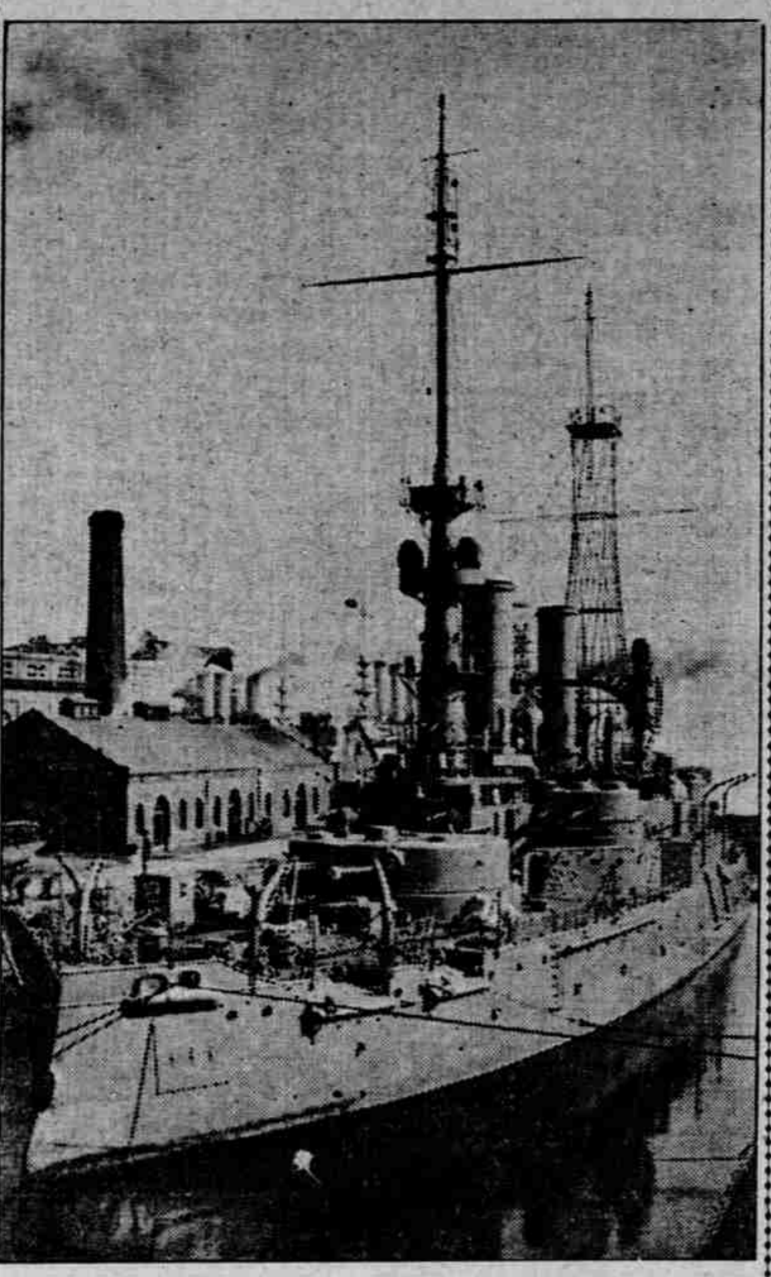
Loss of Armeria is Looked Into by Bureau Official.

Captain E. M. Trott, inspector-general of the Bureau of Lighthouses, is expected in Portland on route to Francisco from Alaska, where he has been called north to investigate the loss of the lighthouse tender Armeria, which was wrecked last month.

MARSHFIELD, Or. June 28.—(Special.)

Portland, June 28.—Arrived—Steamer Carlos, from San Francisco; steamer Rosecrans, from Astoria; steamer Patsy, from Bandon.

FAMOUS SEA FIGHTER DRESSING UP FOR TRIP TO ELKS' GRAND LODGE.



Late information concerning the coming of the battleship Oregon, which is on drydock at the Bremerton Navy-Yard, is that she will sail from Tacoma July 5 and is due in the Columbia Sunday, July 7.

Petitions are being circulated for the purpose of again presenting to the vote of the people the question of forming another port district in the Coos Bay country. The old port of Coos Bay was declared void by a decision of the Supreme Court, there having been technical errors in its formation.

TWO BOATS FOR BRITAIN

PORTLAND GRAIN WILL GO TO ENGLAND AT 368 3D.

Harlesden Comes From San Diego to Load Lumber Here and in North for Australia.

SAN FRANCISCO, June 28.—(Special.)—In addition to the British ship Galgate reported yesterday chartered to load grain at Portland for the United Kingdom, two more vessels have been taken on for the same business.

The British steamer Harlesden, now at San Diego, has been taken on the charter by Davies & Fenton to load lumber and iron from Philadelphia to Australia.

The steamer schooner Carlos, Columbia River steamer schooner, is being loaded for Portland today and the Bear arrived.

The Pacific Mail liner Mongolia sailed for the Orient today and the City of Panama, of the same line, arrived from Panama.

The steamer schooner Carlos, Columbia River steamer schooner, is being loaded for Portland today and the Bear arrived.

The steamer schooner Carlos, Columbia River steamer schooner, is being loaded for Portland today and the Bear arrived.

The steamer schooner Carlos, Columbia River steamer schooner, is being loaded for Portland today and the Bear arrived.

The steamer schooner Carlos, Columbia River steamer schooner, is being loaded for Portland today and the Bear arrived.

The steamer schooner Carlos, Columbia River steamer schooner, is being loaded for Portland today and the Bear arrived.

The steamer schooner Carlos, Columbia River steamer schooner, is being loaded for Portland today and the Bear arrived.

The steamer schooner Carlos, Columbia River steamer schooner, is being loaded for Portland today and the Bear arrived.

CONFIDENCE IS GROWING

Nearly All the Leading Cities Report Improvement in Trade Conditions—Larger Consumption of Finished Steel Products.

NEW YORK, June 28.—R. G. Dun & Co.'s weekly review of trade will say: The first half of the year closes with much actual achievement in the attainment of business promises.

The actual achievement is chiefly in the increase in industrial activity, due to the need of replenishing depleted stocks and of supplying the pressing wants of a growing population.

The promise held out for the remainder of the year is a temporary clearing of some mills and factories. Aggregate transactions, however, continue to expand over the past year.

Some letting up is noted in the railroad demand for steel, but this is largely compensated for by the consumption of plates, bars, and structural material, so that higher prices for certain steel products are announced.

Reports from nearly all the leading cities indicate a conservative betterment, both in volume of activity and in business confidence.

Business failures for the week ending June 27, 1912, 237 in the U. S. against 268 last week, 227 in the U. S. against 191, 197 in 1910, 215 in 1909 and 236 in 1908.

Business failures for the week in Canada number 28, which contrasts with 23 last week and 32 the week of last year.

Wheat, including flour, exports from the United States for the week ending June 27 aggregate 3,187,327 bushels, against 4,734,034 last week and 2,078,405 the week before.

Corn exports for the week are 149,835 bushels, against 30,583 last week and 413,848 the week before.

Corn exports for the week are 149,835 bushels, against 30,583 last week and 413,848 the week before.

Corn exports for the week are 149,835 bushels, against 30,583 last week and 413,848 the week before.

Corn exports for the week are 149,835 bushels, against 30,583 last week and 413,848 the week before.

Corn exports for the week are 149,835 bushels, against 30,583 last week and 413,848 the week before.

Corn exports for the week are 149,835 bushels, against 30,583 last week and 413,848 the week before.

Corn exports for the week are 149,835 bushels, against 30,583 last week and 413,848 the week before.

Corn exports for the week are 149,835 bushels, against 30,583 last week and 413,848 the week before.

Corn exports for the week are 149,835 bushels, against 30,583 last week and 413,848 the week before.

Corn exports for the week are 149,835 bushels, against 30,583 last week and 413,848 the week before.

Corn exports for the week are 149,835 bushels, against 30,583 last week and 413,848 the week before.

Corn exports for the week are 149,835 bushels, against 30,583 last week and 413,848 the week before.

Corn exports for the week are 149,835 bushels, against 30,583 last week and 413,848 the week before.

Corn exports for the week are 149,835 bushels, against 30,583 last week and 413,848 the week before.

Corn exports for the week are 149,835 bushels, against 30,583 last week and 413,848 the week before.

Corn exports for the week are 149,835 bushels, against 30,583 last week and 413,848 the week before.

Corn exports for the week are 149,835 bushels, against 30,583 last week and 413,848 the week before.

Corn exports for the week are 149,835 bushels, against 30,583 last week and 413,848 the week before.

Corn exports for the week are 149,835 bushels, against 30,583 last week and 413,848 the week before.

Corn exports for the week are 149,835 bushels, against 30,583 last week and 413,848 the week before.

Corn exports for the week are 149,835 bushels, against 30,583 last week and 413,848 the week before.

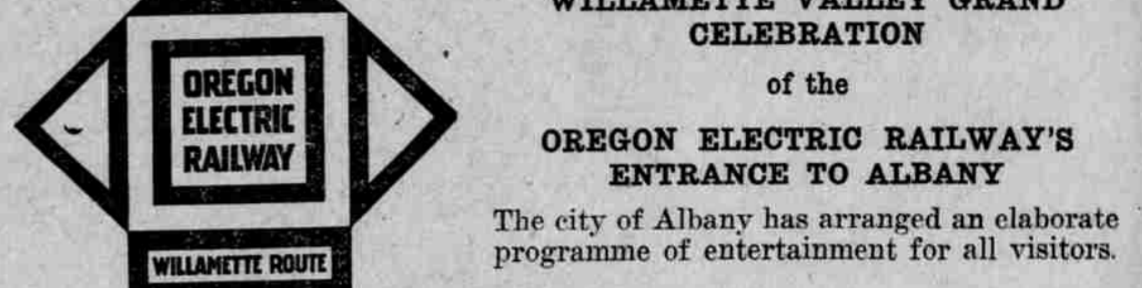
OPENING THE LINE OF THE OREGON ELECTRIC RY. TO ALBANY, OR., JULY 4TH

Portland Commercial Club Excursion, Special Train Leaves 7:50 A. M., Jefferson Street Station Only Arriving Albany 10:45 A. M., Returning in the Evening

ALBANY ROUND TRIP \$2.30 Going This Train Only—Returning Any Train July 4

To Join the Excursion Please call at City Ticket Office, Fifth and Stark Streets, or at Jefferson and Front-street Station.

For the WILLAMETTE VALLEY GRAND CELEBRATION of the OREGON ELECTRIC RAILWAY'S ENTRANCE TO ALBANY



REGULAR TRAIN SERVICE JULY 4 Five Daily Trains To and From Albany Two Limited and Three Local Trains on and after July 4.

Table with 5 columns: Local, Limited, Local, Limited, Local. Rows show departure and arrival times for Portland, Salem, and Albany.

The Portland time shown is from Jefferson-street Station; from North Bank Station twenty minutes earlier. Similar schedule northbound.

NOTE NEW LIMITED 5:00 P. M. TO SALEM AND ALBANY

Table of market prices for various commodities including steers, hogs, and sheep. Columns list item names and prices.

OMAHA Live Stock Market. Receipts, 1250; market steady. Native steers, \$4.00-4.25; cows and heifers, \$3.75-4.00.

CHICAGO, June 28.—Cattle—Receipts, 1200; market, strong. Beef steers, \$5.75-6.00; cows and heifers, \$5.00-5.25.

MISSION WORK DISCUSSED Mrs. Harlan Addresses Portland Federation of Auxiliaries.

Enlargement of the Christian Portland mission of the Christian Church and the establishment of an industrial school on the Atlantic Coast in Africa were the subjects presented yesterday by Mrs. M. E. Harlan, of Indianapolis.

Man and Wife Extol Its Merits

This honest, straightforward statement of Thos. L. Scarborough is convincing proof of the great merit of Duffy's Pure Malt Whiskey.

"My wife and I have used Duffy's Pure Malt Whiskey for three years and find it to be all that you recommend it to be. My wife used it for weakness and says it is the greatest strength builder she has ever found.

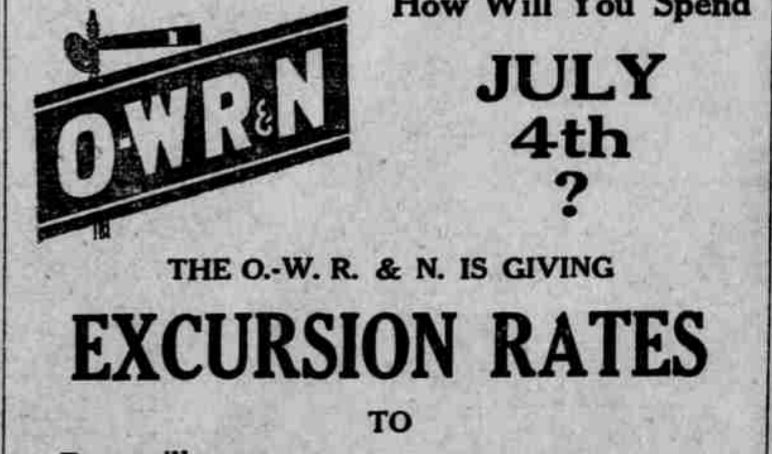
Duffy's Pure Malt Whiskey has to its credit over fifty years of success without a question as to its merits as a remedial agent.

When you ask your druggist, grocer or dealer for Duffy's Malt Whiskey be sure you get the genuine. It is an absolute pure malt whiskey and is sold in sealed bottles only.

THE O-W-R. & N. IS GIVING EXCURSION RATES TO Bonneville Cascade Locks Bridal Veil Hood River and Many Other Points

SPECIAL TRAIN leaves Portland Union Depot 9 A. M.; returning, leaves Hood River 5:30 P. M., arriving Portland 8:30 P. M., thus giving a full day of pleasure.

For particulars apply to City Ticket Office THIRD AND WASHINGTON STS., PORTLAND



How Will You Spend JULY 4th? THE O-W-R. & N. IS GIVING EXCURSION RATES TO Bonneville Cascade Locks Bridal Veil Hood River and Many Other Points SPECIAL TRAIN leaves Portland Union Depot 9 A. M.; returning, leaves Hood River 5:30 P. M., arriving Portland 8:30 P. M., thus giving a full day of pleasure. For particulars apply to City Ticket Office THIRD AND WASHINGTON STS., PORTLAND

SOCIALIST PROVES BOXER

Speaker at Doty, Wash., Bests Man Who Kicks Out Soapbox.

CENTRALIA, Wash., June 28.—(Special.)—Taking exception to the remarks of Joseph Jarvis, a Socialist speaker, at Doty last night, Will Jennings, foreman at the Doty mill, kicked the soapbox from under the speaker.

The meeting was violently transformed into a riotous encounter, in which Jarvis came out with colors flying and Jennings suffered the loss of two teeth.

CATTLE MARKET FIRMER

BETTER FEELING IN ALL LINES AT STOCKYARDS.

Choice Light Hogs Again Sell at Eight Cents—Good Run of Sheep, but No Sales.

There was a better undertone in the cattle market yesterday and a continuance of the firmness in hogs noted on the preceding day.

A load of steers was sold at \$6.25 and a few small lots brought \$6.75 and \$7. There was a good feeling also in other kinds of cattle.

A load of choice light hogs was disposed of in the forenoon at \$8.

Receipts yesterday were 111 cattle, 13 calves, 1241 sheep and 1000 horses.

Shippers were Sevier & Weed, by boat, 34 calves; J. E. Reynolds, Condon, 1 car of calves; C. E. Bohlsen, Moro, 1 car of cattle and calves; William Tatum, Dallas, 1 car of horses; F. B. Decker, Silverton, 2 cars of sheep; C. E. Lane, Camby, 4 cars of sheep; R. W. Gill, West Selo, 1 car of hogs; Hugh Cummings, Corvallis, and Albin, 1 car of calves, sheep and hogs; L. E. West, Oakland, 2 cars of sheep; C. F. Galvin, 1 car of sheep; J. O. H. 1 car of calves; Galbraith, Sumas, Wash., 1 car of horses; M. McCrow, Goldendale, 1 car of hogs, and Walter Tate, Stiles, Idaho, 1 car of cattle.

The day's sales were as follows: 112 hogs, 1241 sheep, 1000 horses, 13 calves, 1241 sheep and 1000 horses.