

# LAST CHANCE TO BUY LEE'S CREEK GOLD MINES AT 2½ CENTS PER SHARE

Only 300,000 Shares Left. The Price Will Positively Be Advanced to 5 Cents Per Share as Soon as the Water Is Turned Through the Main Ditch. Our Superintendent Assures Us that We Will Have Four Giants in Operation Before the First of May.

## Are You "From Missouri?"

Then let us show you. Come to the office and buy 5000 shares or more of this stock at 2½ cents per share and pay for same and we will buy you a round-trip ticket and pay all your expenses to and from the property; you to go and see the property immediately. If you do not find it is represented, and are not satisfied with your investment, come back to the office and tell us so, and we will promptly refund your money. Isn't that fair? It's the way we have built up and maintained our brokerage business. We never offer any stock to our clients that we have not put our money in first. We invest on our judgment backed by years of practical mining. Lee's Creek stock is an investment and not a speculation, for we have the gold and the water to wash it out.

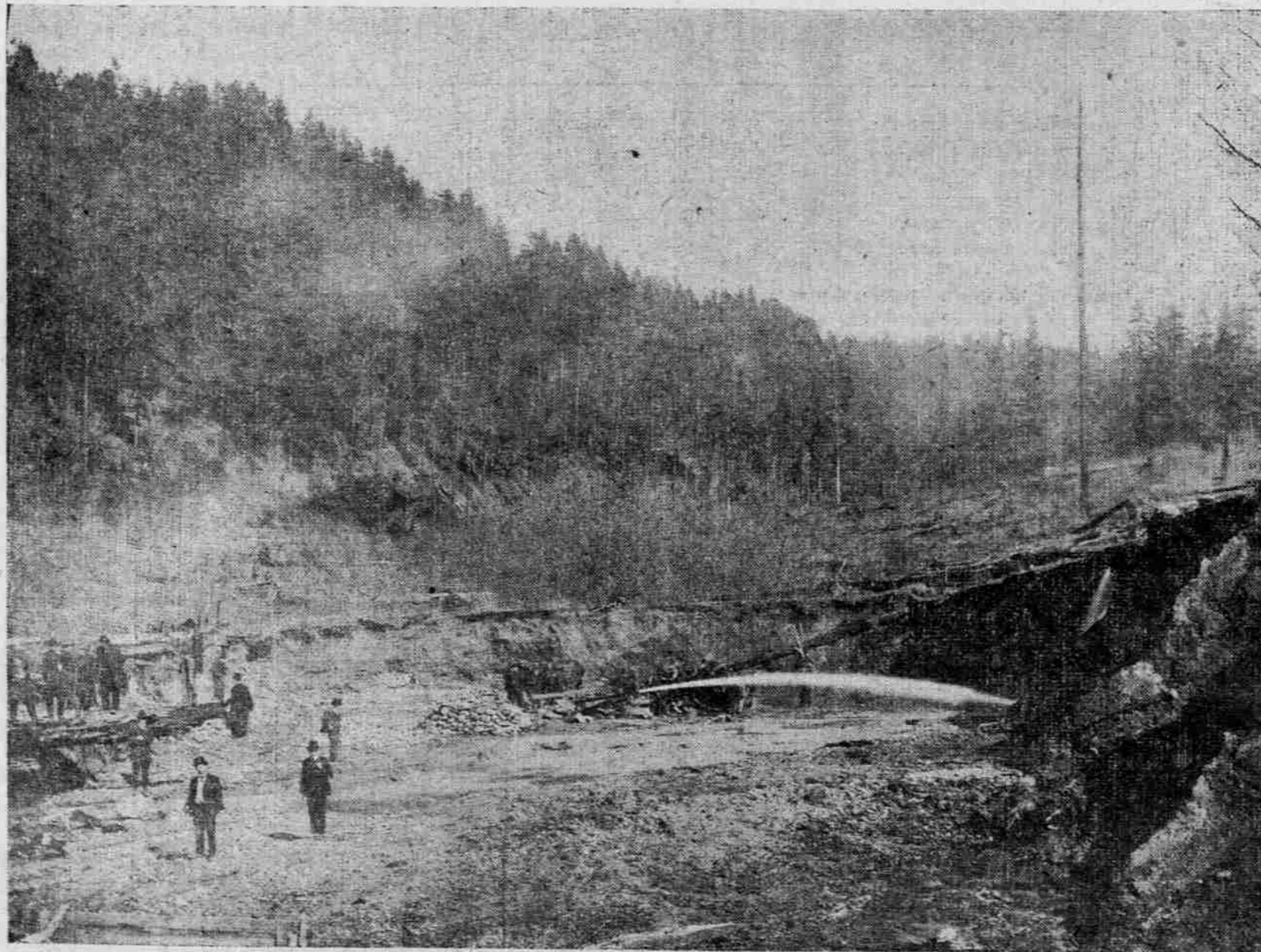


A BUNCH OF MISSOURIANS

That wanted to see before they put their money in. Fifty of them live in Portland. They visited the property at our expense; agreeing to take 5000 shares if they found the property as represented. They all found it better than represented, and many of them increased their subscriptions from 5000 to as high as 20,000 shares. If you don't recognize them in the picture come to the office and get their names and addresses and ask them about it. Many of them will show you souvenirs of gold that they panned out while on the ground.

## Management Practical

You wouldn't take your watch to a blacksmith to have it fixed. Neither would you take your horse to a jeweler to have him shod. Yet you would use as good judgment in either case as you would to buy mining stock in a mine that was managed by a farmer or a preacher or any other business or professional man who knew absolutely nothing about mining. It takes practical mining men with sufficient capital, energy and time to develop and operate a mine. The Lee's Creek Gold Mines are controlled, operated, and managed by practical mining men of years of experience.



This picture represents one of our Hydraulic Giants at work, operated by a small ditch from Lee's Creek under low pressure which will last until the water is turned into our main ditch. This Giant is now piling up \$100.00 per day in gold in our sluice boxes. Figure on from 3 to 5 of these giants running night and day under high pressure every day in the year, with sufficient ground to last 25 years and you will have some conception of this wonderful property.

## Our Property

About 1000 acres proven placer ground; a ditch 35 miles long, built at a cost of nearly \$75,000, carrying sufficient water to run from three to five giants every day in the year; gravel averaging 30 cents to the yard can be handled at a maximum cost of 4 cents per cubic yard; less than 5 acres of this ground has been worked in a crude way during the last 30 years, and has produced more than \$100,000. Pronounced by experts to be the largest deposit of placer gold on the Pacific Coast. Has from 15,000,000 to 20,000,000 feet fine saw timber and a very promising quartz prospect opened by 500 feet of tunnel. A good, honest buy at 5 cents per share. A bonanza at 2½ cents.

## Investigate Intelligently

You wouldn't go to a lawyer to have a tooth pulled. Neither would you go to a dentist for legal advice. Yet you would use as good judgment in either case as you would to buy mining stock from a promoter or broker who knows absolutely nothing about practical mining. Your broker may be scrupulously honest in what he tells you, and yet not know what he is talking about. Not one broker out of five ever saw the inside of a mine, and wouldn't know a crosscut from a winze, or a bedrock flume from a sluicelox if he met them in the street. We attribute our success to our practical knowledge of mining, and can give you reliable information on any stock we offer for sale. We can talk intelligently to your mining engineer and back it up by sending you to see the property. Mining offers a safe and legitimate field for investment when you investigate intelligently like you would when you buy a house and lot, a horse and buggy or a stock of goods.

Remember, Only 300,000 Shares Left. More Than 600,000 Shares Sold During the Last 20 Days. No Stock Sold on the Installment Plan After Monday of Next Week. Office Open Wednesday and Saturday Nights Until Nine O'clock and Sunday From 10 A. M. Until 2 P. M.

# Stock and Bond Department, Commonwealth Trust Company

Sixth and Ankeny Sts.