

# RUMBLINGS OF WAR

## Aroused by Mitchell's Plan of Reorganization

### COMMITTEE SEEMS UNWILLING

Senator's Plan of Concentrating Republican Power May Stir Up Strife and Strike a Nail in Senatorial Ambition of Carey.

Mutterings and rumblings are heard in the Republican county central committee. Members of that body sniff at every breeze to find out what part they will play in the assumption of their powers by an executive or managing committee. The gentlemen are thinking a whole lot of these good old summer days and the color of their thoughts reveals that a number of worriers don't take kindly to the scheme of reorganization.

The programme is to centralize the powers of the county central committee in a committee of seven or 11 members. The smaller committee is to be composed of influential citizens, men who have a name in the community for integrity and political sagacity. The appointment of the smaller committee is authorized by law, but a question more vital to the success of the scheme is whether the reorganization will be authorized by the central committee. Several of the 70 councilors are already voicing against the new arrangements, others are "kicking and still others are quietly thinking of such as: "But what's there in it for us?"

The scheme has the putative stamp of Senator Mitchell upon it. Its ostensible purpose is to dispense with "one-man power," which the advisors of the Senator say has of late years convulsed the politics of this county. "One-man power" as would be substituted "two-man power." Whereas the foundations of the organization would be strengthened, the superstructure would be widened and lightened, and the wheels of the political fortress of the dominant faction in the fight next Spring.

All this sounds well, looks well and tastes well for philippic purposes, but the visual demonstration of the scheme in many minds by incredulity, which will be dispelled only by the actual performance.

Down deep, the scheme has for its purpose the placing of new wheels where Senator Mitchell and his friends can use it. The power is not now lodged where the Senator is absolutely sure of its faithful exercise. He has to trust to the good faith of its leaders. As it would stand if he could effect reorganization, he would have his own thumb on it instead of the other fellow's. The Senator has been long enough in power to know that, while the promise of loyalty is good, the possession of authority is better.

Furthermore, the scheme in the reorganization movement say that Senator Mitchell will gain by retiring Matthews and Carey from the front of the line. They believe that the reorganization, to whom these two men are distasteful, could be induced to render faithful service under a changed leadership.

But shrewd eyes are in the streets that the reorganization is not only a change of dress for the present regime and that the soul, the body and the members will be just the same under the new coat as would be substituted "two-man power." Whereas the foundations of the organization would be strengthened, the superstructure would be widened and lightened, and the wheels of the political fortress of the dominant faction in the fight next Spring.

Matthews and Carey in Control. The Matthews-Carey influence in the committee is believed to be impregnable. Out of the 70 members, 56 are said to be indisposably attached to Matthews and his friends. It is not strange, when one remembers that Mr. Matthews named the committee in the convention. Though he may be out of active politics, his spirit abides with the 56 and his name is written upon the tablet of their hearts.

A suspicion stalks abroad that Senator Mitchell, in his desire to get full control of the county central committee, is endeavoring to ask the central committee to elect an executive committee of his own choosing. This suspicion haunts the central committee. Mind you, the Senator would not have the authority to ask the central committee to elect who he had named. The Senator would stay in "50" and his close friends, who wish to see him re-elected in 1907, and who do not want to see the five State Senators nominated next Spring in his interest, would do the outside work.

All this makes jealous certain ones of the 20. If there is going to be any politics, they say they want to be in the executive committee instead of letting out the enjoyment by proxy. Senator Mitchell is reported to have gained the assent of C. H. Carey, chairman of the county committee, and also of Mr. Matthews.

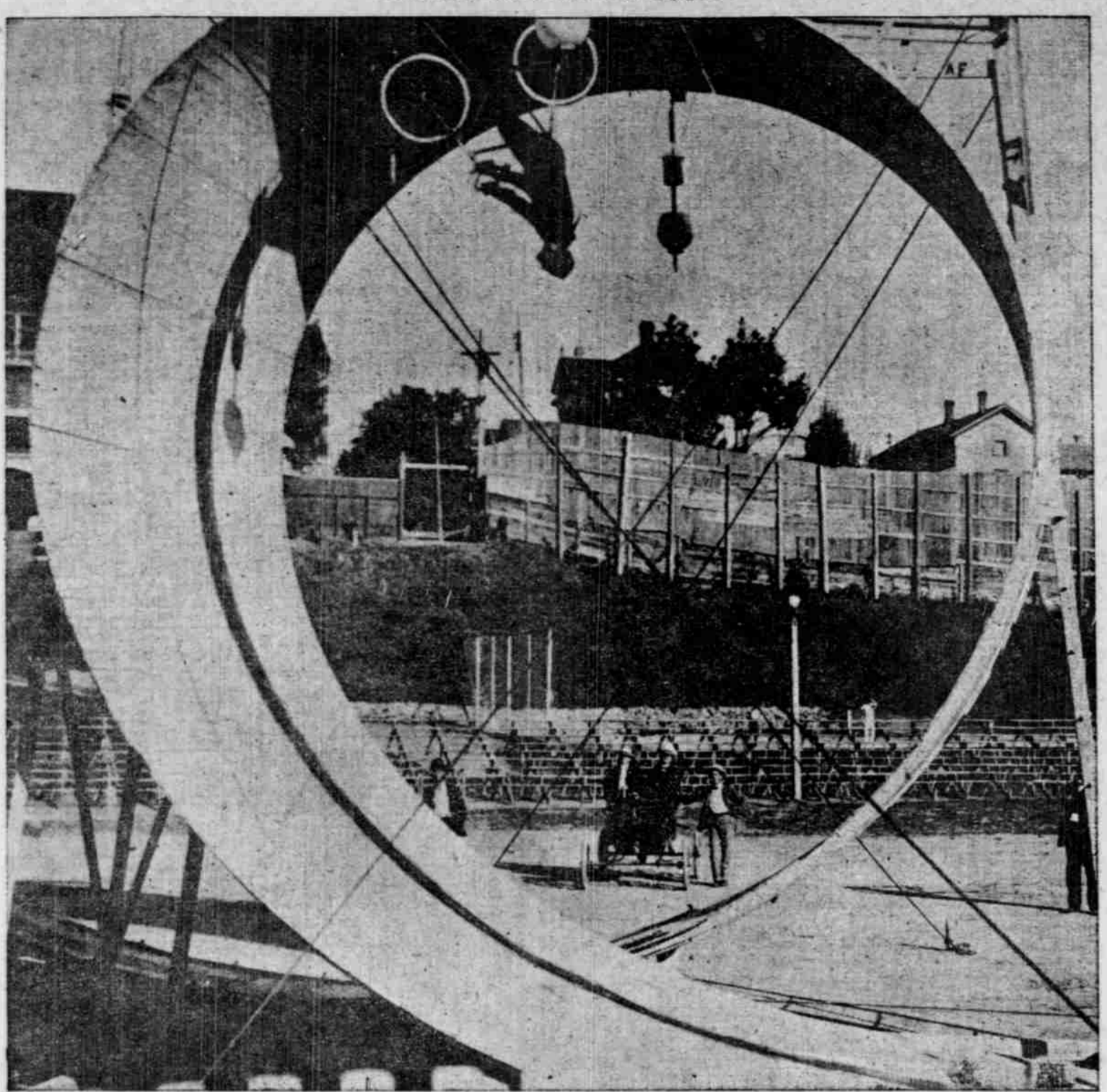
But the promise may not mean all that the Senator wishes. To be sure, the big men of the 70 may be willing to turn over the scepter, but might they not lend that it be wielded by their own executive committee? Might they not say "If 70 of us are too many for the Senator, let him take 11 of us" or "If we want to see the political power in this county, would you not better keep hold of it" or "If the Senator does not wish to take the power away from us, why should he object to leaving it in our hands?"

May Be Blood on the Moon. These doubts and fears have made a commotion in the central committee. "There'll be blood on the moon," declared one of the elect yesterday, "whenever Senator Mitchell or anybody tries to take the management away from the county committee."

It's all moonlight on the lake," declared another gentleman of quality, referring to a political metaphor of Jonathan Bourne. "It's all moonlight on the lake to talk about the central committee's willingness to transfer the authority against its determination to keep the reins of power."

"Can you make an anti-Matthews executive committee," asked a reprobate Simon politician, "out of a pro-Matthews central committee? Can the leopard change his spots?"

## DIABALO LOOPING THE LOOP



THE DARING RIDER PERFORMED HIS FEAT YESTERDAY AFTERNOON FOR THE OREGONIAN WHEN THE ABOVE PHOTOGRAPH WAS TAKEN BY STAFF PHOTOGRAPHER H. M. SMITH

## TOURISTS FLOCK WEST

### LOW RATES STIMULATE TRANSCONTINENTAL TRAVEL

Grand Army Convention, Trans-Mississippi Congress and Corbett-Jeffries Fight the Attractions.

River points show the rush is increasing. Hot weather in Eastern cities has had an effect in inducing travel to the Pacific Coast. Though the journey by rail is not very comfortable during a large portion of the ride, the general understanding of the balmy climate on the Coast has induced hundreds to come West to escape the climbing thermometer in Eastern cities.

The class of travelers now being brought to the Coast is of the very best. While many of them are drawn out of curiosity by others are coming for the purpose of looking over the country, and since they are a people with money to invest railroad men expect good results from the travel.

Will Ask Franchise. Southern Pacific Railway Wants to Build Through Milwaukee. The Southern Pacific Railway Company will ask the Milwaukee County Board for a franchise to run through that place in a short time, and the Council will ask that a good station be built and maintained in Milwaukee.

The engineer says that the depot will be provided. The building of this new line means a complete change of the system between Portland and Oregon City and Hillsboro. The surveys have completed their work at and around Milwaukee, and yesterday Engineer McCleod was at the Clackamas to complete that portion of the work. It is thought at Milwaukee that these changes will be the making of Milwaukee. The present line passes too far to the east to be of much benefit to the place.

Rush to Sea Coast on. Hot Weather Stimulates Travel to Summer Resorts. Hot weather is having an appreciable effect upon the travel to and from the Summer resorts along the seacoast. Traffic officials connected with both the rail and steamboat lines are handling crowds only limited by their capacity.

Hot weather is having an appreciable effect upon the travel to and from the Summer resorts along the seacoast. Traffic officials connected with both the rail and steamboat lines are handling crowds only limited by their capacity. Both from Portland and Puget Sound the steamship sailings are limited, and the rates put into effect provide for returning passengers by a different route should they prefer it, and traffic men expect a great number to take advantage of the opportunity to make a rail and sea trip.

Hot weather is having an appreciable effect upon the travel to and from the Summer resorts along the seacoast. Traffic officials connected with both the rail and steamboat lines are handling crowds only limited by their capacity. Both from Portland and Puget Sound the steamship sailings are limited, and the rates put into effect provide for returning passengers by a different route should they prefer it, and traffic men expect a great number to take advantage of the opportunity to make a rail and sea trip.

Hot weather is having an appreciable effect upon the travel to and from the Summer resorts along the seacoast. Traffic officials connected with both the rail and steamboat lines are handling crowds only limited by their capacity. Both from Portland and Puget Sound the steamship sailings are limited, and the rates put into effect provide for returning passengers by a different route should they prefer it, and traffic men expect a great number to take advantage of the opportunity to make a rail and sea trip.

Hot weather is having an appreciable effect upon the travel to and from the Summer resorts along the seacoast. Traffic officials connected with both the rail and steamboat lines are handling crowds only limited by their capacity. Both from Portland and Puget Sound the steamship sailings are limited, and the rates put into effect provide for returning passengers by a different route should they prefer it, and traffic men expect a great number to take advantage of the opportunity to make a rail and sea trip.

Hot weather is having an appreciable effect upon the travel to and from the Summer resorts along the seacoast. Traffic officials connected with both the rail and steamboat lines are handling crowds only limited by their capacity. Both from Portland and Puget Sound the steamship sailings are limited, and the rates put into effect provide for returning passengers by a different route should they prefer it, and traffic men expect a great number to take advantage of the opportunity to make a rail and sea trip.

Hot weather is having an appreciable effect upon the travel to and from the Summer resorts along the seacoast. Traffic officials connected with both the rail and steamboat lines are handling crowds only limited by their capacity. Both from Portland and Puget Sound the steamship sailings are limited, and the rates put into effect provide for returning passengers by a different route should they prefer it, and traffic men expect a great number to take advantage of the opportunity to make a rail and sea trip.

Hot weather is having an appreciable effect upon the travel to and from the Summer resorts along the seacoast. Traffic officials connected with both the rail and steamboat lines are handling crowds only limited by their capacity. Both from Portland and Puget Sound the steamship sailings are limited, and the rates put into effect provide for returning passengers by a different route should they prefer it, and traffic men expect a great number to take advantage of the opportunity to make a rail and sea trip.

Hot weather is having an appreciable effect upon the travel to and from the Summer resorts along the seacoast. Traffic officials connected with both the rail and steamboat lines are handling crowds only limited by their capacity. Both from Portland and Puget Sound the steamship sailings are limited, and the rates put into effect provide for returning passengers by a different route should they prefer it, and traffic men expect a great number to take advantage of the opportunity to make a rail and sea trip.

## WILL GO TO OLYMPIA,

### Elks Go Out of State for Clambake as Result of Competition.

Portland Elks have decided to hold their clambake at Olympia on August 22, and will go from this city by special train. Olympia and Portland lodges are to act as joint hosts and Olympia has invited Aberdeen, Seattle, Tacoma and other Northwest lodges to join them.

The decision to go to Olympia was reached after a sharp fight between the Astoria & Columbia River Railroad and the Northern Pacific for the excursion. Both roads quoted a rate of \$2.50 for the round trip, and the lodge added 50 cents to this fare to pay incidental expenses.

There is a story in railroad circles to the effect that the Northern Pacific sought to get the excursion, stood willing to meet any rate the seashore line might make. This story, though, is not confirmed.

In any event there will be considerable disappointment among Portland Elks because of the inability to go to the seashore and join with Astorians in the celebration. Astoria and Portland lodges have heretofore been close to each other, and Astoria has assisted royally in aiding every Portland enterprise.

Secretary E. W. Rowe, of Portland lodge, stated last night that it was the original intention of the lodge to join with Astoria in the celebration. "We had planned to make the excursion on August 22, the day following the Astoria regatta, and had arranged the plans with Astoria lodge. At the last moment we received a letter from the local agent of the Astoria & Columbia River Railroad stating that it would be impossible to furnish us cars, and we had to make other arrangements."

Apparently the car shortage situation was bettered for local representatives of the Astoria & Columbia River have been making a strenuous effort to secure the excursion. Added to the pressure from this source is that of Astoria Elks, who would be glad to join with the Portland lodge in taking the outing.

## PERSONAL MENTION

G. Muecke, one of the leading hopmen of Astoria, is at the Belvedere. M. O. Reed, an attorney of Colfax, arrived in town yesterday and is at the Perkins.

M. M. Godman, the Democratic politician of Dayton, Wash., is a guest of the Perkins. Mrs. D. W. Standrod came in from Pocatello, Idaho, yesterday and is at the Perkins.

Mrs. John Noyes, of Butte, and Mrs. M. M. Kirkman, of Evanston, Ill., are at the Perkins. Mrs. C. W. Hess and her son, of Colfax, who have been visiting Mr. and Mrs. J. J. Read, returned home yesterday.

Mrs. Joseph McCabe, Miss Olive McCabe and Miss Mabelle Brents, of Walla Walla, are among the arrivals at the Perkins. James McKean, of the Northern Pacific ticket office at Seattle, passed through the city yesterday on his way to Southern California on a vacation.

F. H. Crowell, a business man from Hillsboro, who has been at the Portland for several days, left yesterday for Seattle where he will engage in business. F. W. Watson, son of J. Frank Watson,

Hot weather is having an appreciable effect upon the travel to and from the Summer resorts along the seacoast. Traffic officials connected with both the rail and steamboat lines are handling crowds only limited by their capacity. Both from Portland and Puget Sound the steamship sailings are limited, and the rates put into effect provide for returning passengers by a different route should they prefer it, and traffic men expect a great number to take advantage of the opportunity to make a rail and sea trip.

Hot weather is having an appreciable effect upon the travel to and from the Summer resorts along the seacoast. Traffic officials connected with both the rail and steamboat lines are handling crowds only limited by their capacity. Both from Portland and Puget Sound the steamship sailings are limited, and the rates put into effect provide for returning passengers by a different route should they prefer it, and traffic men expect a great number to take advantage of the opportunity to make a rail and sea trip.

Hot weather is having an appreciable effect upon the travel to and from the Summer resorts along the seacoast. Traffic officials connected with both the rail and steamboat lines are handling crowds only limited by their capacity. Both from Portland and Puget Sound the steamship sailings are limited, and the rates put into effect provide for returning passengers by a different route should they prefer it, and traffic men expect a great number to take advantage of the opportunity to make a rail and sea trip.

Hot weather is having an appreciable effect upon the travel to and from the Summer resorts along the seacoast. Traffic officials connected with both the rail and steamboat lines are handling crowds only limited by their capacity. Both from Portland and Puget Sound the steamship sailings are limited, and the rates put into effect provide for returning passengers by a different route should they prefer it, and traffic men expect a great number to take advantage of the opportunity to make a rail and sea trip.

Hot weather is having an appreciable effect upon the travel to and from the Summer resorts along the seacoast. Traffic officials connected with both the rail and steamboat lines are handling crowds only limited by their capacity. Both from Portland and Puget Sound the steamship sailings are limited, and the rates put into effect provide for returning passengers by a different route should they prefer it, and traffic men expect a great number to take advantage of the opportunity to make a rail and sea trip.

Hot weather is having an appreciable effect upon the travel to and from the Summer resorts along the seacoast. Traffic officials connected with both the rail and steamboat lines are handling crowds only limited by their capacity. Both from Portland and Puget Sound the steamship sailings are limited, and the rates put into effect provide for returning passengers by a different route should they prefer it, and traffic men expect a great number to take advantage of the opportunity to make a rail and sea trip.

Hot weather is having an appreciable effect upon the travel to and from the Summer resorts along the seacoast. Traffic officials connected with both the rail and steamboat lines are handling crowds only limited by their capacity. Both from Portland and Puget Sound the steamship sailings are limited, and the rates put into effect provide for returning passengers by a different route should they prefer it, and traffic men expect a great number to take advantage of the opportunity to make a rail and sea trip.

Hot weather is having an appreciable effect upon the travel to and from the Summer resorts along the seacoast. Traffic officials connected with both the rail and steamboat lines are handling crowds only limited by their capacity. Both from Portland and Puget Sound the steamship sailings are limited, and the rates put into effect provide for returning passengers by a different route should they prefer it, and traffic men expect a great number to take advantage of the opportunity to make a rail and sea trip.

Hot weather is having an appreciable effect upon the travel to and from the Summer resorts along the seacoast. Traffic officials connected with both the rail and steamboat lines are handling crowds only limited by their capacity. Both from Portland and Puget Sound the steamship sailings are limited, and the rates put into effect provide for returning passengers by a different route should they prefer it, and traffic men expect a great number to take advantage of the opportunity to make a rail and sea trip.

Hot weather is having an appreciable effect upon the travel to and from the Summer resorts along the seacoast. Traffic officials connected with both the rail and steamboat lines are handling crowds only limited by their capacity. Both from Portland and Puget Sound the steamship sailings are limited, and the rates put into effect provide for returning passengers by a different route should they prefer it, and traffic men expect a great number to take advantage of the opportunity to make a rail and sea trip.

Hot weather is having an appreciable effect upon the travel to and from the Summer resorts along the seacoast. Traffic officials connected with both the rail and steamboat lines are handling crowds only limited by their capacity. Both from Portland and Puget Sound the steamship sailings are limited, and the rates put into effect provide for returning passengers by a different route should they prefer it, and traffic men expect a great number to take advantage of the opportunity to make a rail and sea trip.

Hot weather is having an appreciable effect upon the travel to and from the Summer resorts along the seacoast. Traffic officials connected with both the rail and steamboat lines are handling crowds only limited by their capacity. Both from Portland and Puget Sound the steamship sailings are limited, and the rates put into effect provide for returning passengers by a different route should they prefer it, and traffic men expect a great number to take advantage of the opportunity to make a rail and sea trip.

# HE LOOPS THE LOOP

## Diavalo Performs Hazardous Feat Unharmd

### WHILE TEN THOUSAND CHEER

In Four Seconds the Great Deed is Done at Multnomah Field—Other Dangerous Tricks on Bicycles Raise Spectators' Hair.

He looped it. Diavalo, who is known to his tailor as John Ruel, went round Kilpatrick's man-killing bicycle chute last night in four seconds in safety, and before 3000 spectators who gathered at Multnomah field to view the spectacle.

Looping the loop is not likely to become a popular pastime, nor is it a spectacle often presented to the public. Kilpatrick's loop stood for many months in Minneapolis before Diavalo turned up to ride it. There was no lack of aspirants, but although each rider was compelled to undergo a course of training and preliminary practice many of them forebore ever to attempt the final feat, while of those who did two were killed and numerous others were crippled for life.

The multitude of people who visited the spectacle last evening, its opening night, certainly had a new sensation, and while the act itself with all the preliminaries and announcements occupies less than two minutes the crowd was satisfied, if cheering and applause indicates satisfaction.

The cycle dangle with which the show was opened was another daring exhibition in which three men and one woman dashed round the walls of a 30-foot basin at a speed which meant sudden and certain death if any of the riders should swerve six inches from his perilous path.

Prof. Hunt's dog and monkey show followed, and then the Francellias appeared in an excellent act far superior to that of the average strong man turns of the vaudeville stage. Francella's feat of holding in his teeth a chair on which his 25-pound wife is seated and cackawalking with her up and down the stage made the hit it deserved with the audience.

A troupe of Arabs followed the Francellias, and after the whirling dervish had whirled more than 250 times in ten minutes the rest of the Orientalists did some fantastic tumbling and acrobatic work.

But the people had come out to see the hazardous bicycle feats, the acts in which the performers get killed from time to time and which are always calculated to make the collective hair of the spectators stand on end while they hold their breath and their hearts stop beating.

All of these sensations were experienced even before Diavalo looped the loop, when Charles G. Kilpatrick, the one-legged bicyclist, mounted a 300-foot staircase and, jumping on his wheel, shot like a comet down the incline, a hundred feet from the bottom his wheel swerved and ran within four inches of the edge. A moan went up from the crowd, but before it was fully uttered the rider was speeding across the level ground unharmd.

And then Diavalo looped the loop.

PERSONAL MENTION. G. Muecke, one of the leading hopmen of Astoria, is at the Belvedere. M. O. Reed, an attorney of Colfax, arrived in town yesterday and is at the Perkins.

M. M. Godman, the Democratic politician of Dayton, Wash., is a guest of the Perkins. Mrs. D. W. Standrod came in from Pocatello, Idaho, yesterday and is at the Perkins.

Mrs. John Noyes, of Butte, and Mrs. M. M. Kirkman, of Evanston, Ill., are at the Perkins. Mrs. C. W. Hess and her son, of Colfax, who have been visiting Mr. and Mrs. J. J. Read, returned home yesterday.

Mrs. Joseph McCabe, Miss Olive McCabe and Miss Mabelle Brents, of Walla Walla, are among the arrivals at the Perkins. James McKean, of the Northern Pacific ticket office at Seattle, passed through the city yesterday on his way to Southern California on a vacation.

F. H. Crowell, a business man from Hillsboro, who has been at the Portland for several days, left yesterday for Seattle where he will engage in business. F. W. Watson, son of J. Frank Watson,

Hot weather is having an appreciable effect upon the travel to and from the Summer resorts along the seacoast. Traffic officials connected with both the rail and steamboat lines are handling crowds only limited by their capacity. Both from Portland and Puget Sound the steamship sailings are limited, and the rates put into effect provide for returning passengers by a different route should they prefer it, and traffic men expect a great number to take advantage of the opportunity to make a rail and sea trip.

Hot weather is having an appreciable effect upon the travel to and from the Summer resorts along the seacoast. Traffic officials connected with both the rail and steamboat lines are handling crowds only limited by their capacity. Both from Portland and Puget Sound the steamship sailings are limited, and the rates put into effect provide for returning passengers by a different route should they prefer it, and traffic men expect a great number to take advantage of the opportunity to make a rail and sea trip.

Hot weather is having an appreciable effect upon the travel to and from the Summer resorts along the seacoast. Traffic officials connected with both the rail and steamboat lines are handling crowds only limited by their capacity. Both from Portland and Puget Sound the steamship sailings are limited, and the rates put into effect provide for returning passengers by a different route should they prefer it, and traffic men expect a great number to take advantage of the opportunity to make a rail and sea trip.

Hot weather is having an appreciable effect upon the travel to and from the Summer resorts along the seacoast. Traffic officials connected with both the rail and steamboat lines are handling crowds only limited by their capacity. Both from Portland and Puget Sound the steamship sailings are limited, and the rates put into effect provide for returning passengers by a different route should they prefer it, and traffic men expect a great number to take advantage of the opportunity to make a rail and sea trip.

Hot weather is having an appreciable effect upon the travel to and from the Summer resorts along the seacoast. Traffic officials connected with both the rail and steamboat lines are handling crowds only limited by their capacity. Both from Portland and Puget Sound the steamship sailings are limited, and the rates put into effect provide for returning passengers by a different route should they prefer it, and traffic men expect a great number to take advantage of the opportunity to make a rail and sea trip.

Hot weather is having an appreciable effect upon the travel to and from the Summer resorts along the seacoast. Traffic officials connected with both the rail and steamboat lines are handling crowds only limited by their capacity. Both from Portland and Puget Sound the steamship sailings are limited, and the rates put into effect provide for returning passengers by a different route should they prefer it, and traffic men expect a great number to take advantage of the opportunity to make a rail and sea trip.

Hot weather is having an appreciable effect upon the travel to and from the Summer resorts along the seacoast. Traffic officials connected with both the rail and steamboat lines are handling crowds only limited by their capacity. Both from Portland and Puget Sound the steamship sailings are limited, and the rates put into effect provide for returning passengers by a different route should they prefer it, and traffic men expect a great number to take advantage of the opportunity to make a rail and sea trip.

Hot weather is having an appreciable effect upon the travel to and from the Summer resorts along the seacoast. Traffic officials connected with both the rail and steamboat lines are handling crowds only limited by their capacity. Both from Portland and Puget Sound the steamship sailings are limited, and the rates put into effect provide for returning passengers by a different route should they prefer it, and traffic men expect a great number to take advantage of the opportunity to make a rail and sea trip.

Hot weather is having an appreciable effect upon the travel to and from the Summer resorts along the seacoast. Traffic officials connected with both the rail and steamboat lines are handling crowds only limited by their capacity. Both from Portland and Puget Sound the steamship sailings are limited, and the rates put into effect provide for returning passengers by a different route should they prefer it, and traffic men expect a great number to take advantage of the opportunity to make a rail and sea trip.

Hot weather is having an appreciable effect upon the travel to and from the Summer resorts along the seacoast. Traffic officials connected with both the rail and steamboat lines are handling crowds only limited by their capacity. Both from Portland and Puget Sound the steamship sailings are limited, and the rates put into effect provide for returning passengers by a different route should they prefer it, and traffic men expect a great number to take advantage of the opportunity to make a rail and sea trip.

Hot weather is having an appreciable effect upon the travel to and from the Summer resorts along the seacoast. Traffic officials connected with both the rail and steamboat lines are handling crowds only limited by their capacity. Both from Portland and Puget Sound the steamship sailings are limited, and the rates put into effect provide for returning passengers by a different route should they prefer it, and traffic men expect a great number to take advantage of the opportunity to make a rail and sea trip.

Hot weather is having an appreciable effect upon the travel to and from the Summer resorts along the seacoast. Traffic officials connected with both the rail and steamboat lines are handling crowds only limited by their capacity. Both from Portland and Puget Sound the steamship sailings are limited, and the rates put into effect provide for returning passengers by a different route should they prefer it, and traffic men expect a great number to take advantage of the opportunity to make a rail and sea trip.

and a senator at Columbia College, N. Y., has been appointed by Mayor Williams a delegate for Portland to the American Mining Congress, which meets at Deadwood, S. D., September 7 to 12.

Major H. Huston, now in command of the Nineteenth Regiment, United States Infantry, at Vancouver, Wash., as Lieutenant-Colonel, has been notified that he will be promoted to the rank of Colonel on August 16, and assigned to the Nineteenth Regiment.

NEW YORK, Aug. 10.—(Special.)—Northwestern people registered at New York hotels today as follows:

From Portland—S. E. Struets, at the Manhattan; C. H. Korrell, at the Herald Square.

From Baker City, Or.—J. K. Romig, at the Herald Square.

HAS NO USE FOR REFORM. Captain Samuel Paul, of Salt Lake, Approves Portland Police Methods.

Captain Samuel Paul, for a number of years Chief of Police in Salt Lake City, is in the city on a visit. The captain is favorably impressed with Portland and its officers, and while, as he says, he has not taken occasion to look into the Portland police department, and its system, he believes the officers have a very liberal and correct idea of "how to run things," especially in the Tenderloin district. He is not a believer in reform waves, having resigned from the head of the Salt Lake department at the end of a period of municipal reform which he says would have taxed the nerves of a sane man.

"You can't suppress gambling and things of that sort, and it is doing much even to control those evils," the captain stated.

"I hope Portland doesn't catch a severe attack of the reform mania while I'm here," he added. "I'm here for a rest and a change from all that sort of thing."

Declines London Call. ST. PAUL, Aug. 10.—A letter was read at the People's Church Sunday from his pastor, Dr. Samuel G. Smith, who is now abroad, stating he had declined a call extended to him some months ago by Westminster Chapel, London.

Vesuvius Once More in Eruption. NEW YORK, Aug. 10.—Vesuvius has had a recrudescence of activity, says a Herald dispatch from Naples. The central crater hurled scoria to an unusual height, accompanied by loud rumblings.

**A.B.C. BOHEMIAN**  
"King of all Bottled Beers."  
Brewed from Bohemian Hops.  
Order from Fleckenstein-Mayer Co.

DID HE LOOP THE LOOP? HE DID

**WOMAN'S CROWNING GLORY**  
Imperial Hair Regenerator  
THE STANDARD HAIR COLORING. It is the standard hair coloring, used by the world's leading beauticians. It is the only hair coloring that is safe and does not injure the hair. It is the only hair coloring that is permanent and does not wash out. It is the only hair coloring that is used by the world's leading beauticians.

# Sunstroke Insurance

When the summer's heat gets about 90 degrees, you are liable to be sunstruck any time you are out in the sun, unless you take proper precautions. Several years ago, the writer of this, who has spent much of his life in the tropics, thought he was safe from sunstroke. One day he collapsed, remained unconscious for five hours, and at times his life was despaired of. As a matter of fact, any person whose stomach and bowels are in bad shape in the summer time, is liable to be sunstruck in temperature that would be harmless under normal conditions. That's all there is to it. Stomach and bowels full of fermenting refuse that forms acids and gases, raise the heat of the body and blood many degrees. Scientists have found that natives of the South Sea Islands, living on laxative fruit, bananas, coconuts, bread-fruit, have a temperature 20 degrees lower than that of white men who are careless about their food or their bowels. It has been found in years of experience, that a CASCARET Candy Cathartic taken at bed-time every night will keep the body clean and cool inside all day, and forms a safe and thoroughly reliable form of sunstroke insurance.

**KINGSFORD'S OSWEGO CORN STARCH**  
Purest and Best for Puddings, Custards, Blanc Mange, Etc.  
For sale by all first-class grocers.