

HEAVY LUMBER TRAFFIC

AUGUST SHIPMENTS FROM RIVER WERE 8,500,000 FEET.

Several Vessels Due for September Loading - Wholesale Descriptions From Ships at San Francisco.

The schooner G. W. Watson, a 600,000-foot carrier, has been chartered to load lumber at this port for Hilo, and will sail from San Francisco for Portland in a few days. The lumber business by sea from Portland for the first eight months of the present year has already exceeded that of any previous 12 months in the history of the port, and the record will be maintained for the remainder of the year.

BROUGHT HOME FOR BURIAL

Remains of the Late Captain Waud Arrive From Dawson. The remains of the late Captain Orrin S. Waud, who died in Alaska about two years ago, were brought to this city yesterday, and will be buried at Lone Fir Thursday.

GALE AT PORT ELIZABETH

Eighteen Vessels Driven Ashore and Crews Lost. CAPE TOWN, Sept. 1.—Eighteen vessels, mostly sailing craft, have been driven ashore in a gale at Port Elizabeth.

Baldwin Supply-Ship Spoken.

TROMSOE, Norway, Sept. 1.—The Baldwin supply-ship Frithjof, which left here July 1 for Franz Josef Land, was spoken August 18. She reported all well on board, and said she had prevented her from reaching Franz Josef Land.

Many French Ships.

According to statistics published in a French paper, 103 ships of a total of 263,384 tons were built in France in the first half of this year, while for the whole of 1901 the output was only 177,543 tons.

Warren to Go to Manila.

SEATTLE, Wash., Sept. 1.—The Government transport Warren will undergo repairs at Moran Bros' shipyard prior to a trip to Manila. The repairs will not be general, several thousand dollars will be expended. The Warren will take a full cargo of supplies to the Philippines.

San Francisco Crimps.

Desertions in the Bay City More Numerous Than in Portland. Every time the nation's deep-water ships in Portland are involved over the side in the belief that they are bettering their condition by leaving the ship, a roar goes up from a set of well-meaning but uninformed individuals.

Marine Notes.

Captain W. P. Day, lighthouse inspector, has just returned from an inspection trip along the Washington coast. The British brig Cyrenus, owned by St. Helena at 5:30 last evening, will reach Portland some time today.

Domestic and Foreign Ports.

ASTORIA, Sept. 1.—Sailed at 2 P. M.—British ship Cyrenus for Queenstown. Condition of the bar at 4:30 P. M. smooth; wind north-west; weather clear.

Warren to Go to Manila.

SEATTLE, Wash., Sept. 1.—The Government transport Warren will undergo repairs at Moran Bros' shipyard prior to a trip to Manila. The repairs will not be general, several thousand dollars will be expended.

San Francisco Crimps.

Desertions in the Bay City More Numerous Than in Portland. Every time the nation's deep-water ships in Portland are involved over the side in the belief that they are bettering their condition by leaving the ship, a roar goes up from a set of well-meaning but uninformed individuals.

SWALLOW TAKES THE RACE

DISTANCES THE SKYLARK IN YACHT CLUB REGATTA.

Owyhee Carries Off Honors in Class B, and Wauna in Special Class C.

The last race of the season for the members of the Oregon Yacht Club took place yesterday afternoon. Boats of three classes contended for the prize, a silk pennant given by the club to the winner in each class.

STRANDED ANITA TOWED IN.

GALE AT PORT ELIZABETH. Eighteen Vessels Driven Ashore and Crews Lost. CAPE TOWN, Sept. 1.—Eighteen vessels, mostly sailing craft, have been driven ashore in a gale at Port Elizabeth.

Baldwin Supply-Ship Spoken.

TROMSOE, Norway, Sept. 1.—The Baldwin supply-ship Frithjof, which left here July 1 for Franz Josef Land, was spoken August 18.

Many French Ships.

According to statistics published in a French paper, 103 ships of a total of 263,384 tons were built in France in the first half of this year, while for the whole of 1901 the output was only 177,543 tons.

Warren to Go to Manila.

SEATTLE, Wash., Sept. 1.—The Government transport Warren will undergo repairs at Moran Bros' shipyard prior to a trip to Manila. The repairs will not be general, several thousand dollars will be expended.

San Francisco Crimps.

Desertions in the Bay City More Numerous Than in Portland. Every time the nation's deep-water ships in Portland are involved over the side in the belief that they are bettering their condition by leaving the ship, a roar goes up from a set of well-meaning but uninformed individuals.

Marine Notes.

Captain W. P. Day, lighthouse inspector, has just returned from an inspection trip along the Washington coast. The British brig Cyrenus, owned by St. Helena at 5:30 last evening, will reach Portland some time today.

Domestic and Foreign Ports.

ASTORIA, Sept. 1.—Sailed at 2 P. M.—British ship Cyrenus for Queenstown. Condition of the bar at 4:30 P. M. smooth; wind north-west; weather clear.

Warren to Go to Manila.

SEATTLE, Wash., Sept. 1.—The Government transport Warren will undergo repairs at Moran Bros' shipyard prior to a trip to Manila. The repairs will not be general, several thousand dollars will be expended.

San Francisco Crimps.

Desertions in the Bay City More Numerous Than in Portland. Every time the nation's deep-water ships in Portland are involved over the side in the belief that they are bettering their condition by leaving the ship, a roar goes up from a set of well-meaning but uninformed individuals.

Marine Notes.

Captain W. P. Day, lighthouse inspector, has just returned from an inspection trip along the Washington coast. The British brig Cyrenus, owned by St. Helena at 5:30 last evening, will reach Portland some time today.

Downing, Hopkins & Co.

WHEAT AND STOCK BROKERS

Room 4, Ground Floor Chamber of Commerce

tired at end of second round on account of accident. "C" Class. Swallow, sailed by Wolff and Marlett. Time, 55 minutes.

EASTERN LIVESTOCK.

CHICAGO, Sept. 1.—Cattle.—Receipts, 15,000, including 300 Texas, 3000 Westerns. Market steady; good to prime steers, \$1 75@80; poor to medium, \$4 10@70; stockers and feeders, \$2 50@40; cows, \$1 50@25; heifers, \$2 50@30; calves, \$2 75@35; Texas fed steers, \$3@35; Western steers, \$4@5.

Money, Exchange, Etc.

LONDON, Sept. 1.—Consols for money, 94; do for account, 94 1/2. Money—2 1/2% per cent. The rate of discount in the open market for short bills is 2 1/2 per cent; for three months' bills, 2 1/2 per cent.

Stocks at London.

LONDON, Sept. 1.—Closing quotations: Anaconda, 5 1/2; Norfolk & Western, 7 1/2; do pd, 7 1/2; Ontario & Western, 27 1/2; Bilt & Ohio, 118 1/2; Pennsylvania, 115 1/2; Can. Pacific, 147 1/2; Rand Mines, 120 1/2; Ches. & Ohio, 87 1/2; Reading, 36 1/2.

Downing, Hopkins & Co. WHEAT AND STOCK BROKERS Room 4, Ground Floor Chamber of Commerce

tired at end of second round on account of accident. "C" Class. Swallow, sailed by Wolff and Marlett. Time, 55 minutes.

EASTERN LIVESTOCK.

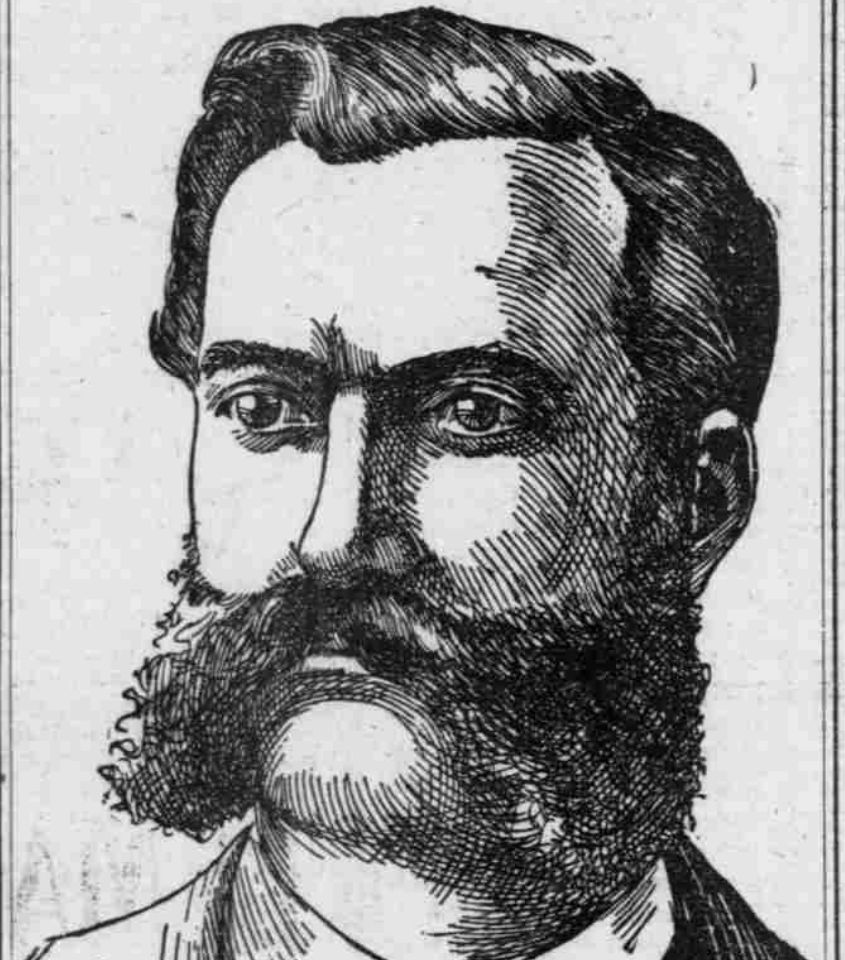
CHICAGO, Sept. 1.—Cattle.—Receipts, 15,000, including 300 Texas, 3000 Westerns. Market steady; good to prime steers, \$1 75@80; poor to medium, \$4 10@70; stockers and feeders, \$2 50@40; cows, \$1 50@25; heifers, \$2 50@30; calves, \$2 75@35; Texas fed steers, \$3@35; Western steers, \$4@5.

Money, Exchange, Etc.

LONDON, Sept. 1.—Consols for money, 94; do for account, 94 1/2. Money—2 1/2% per cent. The rate of discount in the open market for short bills is 2 1/2 per cent; for three months' bills, 2 1/2 per cent.

Stocks at London.

LONDON, Sept. 1.—Closing quotations: Anaconda, 5 1/2; Norfolk & Western, 7 1/2; do pd, 7 1/2; Ontario & Western, 27 1/2; Bilt & Ohio, 118 1/2; Pennsylvania, 115 1/2; Can. Pacific, 147 1/2; Rand Mines, 120 1/2; Ches. & Ohio, 87 1/2; Reading, 36 1/2.



J. HENRI KESSLER, M.D. MANAGER THE OLD ST. LOUIS DISPENSARY Cor. Second and Yamhill Sts., Portland, Or.

Don't wait any longer, but call or write this old doctor today. He has been curing men, old and young, for 28 years—young men who are suffering from the effects of excesses, already feeling and showing some of the following afflictions: Nervous debility, varicocele, losses, weakened vitality, confusion of the mind, dull-looking eyes and countenance, despondency, pimples, on forehead, face and body, loss of energy.

J. HENRI KESSLER, M.D. Cor. 2d and Yamhill Sts., Portland, Or.

P. S.—Always inclose ten 2-cent stamps when writing and a prompt answer will be made.

MEN DR. TALCOTT & CO. 250 1/2 Alder Street. The Leading Specialists of the Coast.

TRAVELERS GUIDE THE PALATIAL OREGONIAN BUILDING

O.P. & N. OREGON SHORT LINE AND UNION PACIFIC THREE TRAINS DAILY FOR ALL POINTS EAST

Scott's Santal-Pepsin Capsules A POSITIVE CURE FOR INFLAMMATION OF CATARRH OF THE BLADDER AND DISORDERED KIDNEYS.

Yes, It's the Best of all TRAINS, when traveling between THE THREE BIG CITIES, Minneapolis, St. Paul and Chicago.

WHITE COLLAR LINE PORTLAND-ASTORIA ROUTE. Round trip daily except Sunday.

THE GREAT NORTHERN Ticket Office 122 Third St. Phone 680

ASTORIA & COLUMBIA RIVER RAILROAD CO. LEAVES DEPOT FIFTH AND ARRIVES

THE PALATIAL OREGONIAN BUILDING Not a dark office in the building; absolutely fireproof; electric lights and artificial water; perfect sanitation and thorough ventilation.

AINSLIE, DR. GEORGE, Physician. ANDERSON, GUSTAV, Attorney-at-Law. ASSOCIATED PRESS, E. L. Powell, Mgr.

EAST VIA SOUTH SOUTHERN PACIFIC COMPANY

TIME CARD OF TRAINS PORTLAND

MEN NO CARE THE MODERN APPLIANCE—A positive way to perfect method. THE VACUUM TREATMENT cures you without medicine.

WINE OF CARDUI FOR WOMEN