

# Gearhart FIRST SATURDAY

## ART WALK

June

6

2 to 5 p.m.

GEARHART — Summer at the North Oregon Coast is in full swing. Don't miss the wealth of talent and unique decorating ideas from Gearhart ArtWalk merchants. Look for the "Welcome to the SHORE" flags indicating participating merchants and the updated ArtWalk map.

### A Great Gallery

576 Pacific Way

Gallery owner/artist Susan Thomas will introduce her latest work, "Misty Morning," depicting an early morning walk to Gearhart Beach, the first in her new dunes series. Thomas' daughter Ashley will have her latest photography on display venturing into the world of black and white. New jewelry, pottery, hand knits and driftwood pieces are on display, and of course ArtWalk would not be complete without chocolate.

### By The Way

564 Pacific Way

Celebrate a first anniversary. It's been one year since By The Way opened, and

looks forward to a wonderful year ahead. The gallery features a mix of artists, and new and fun summer items. Come by, have a look and toast the coming year.

### Cougar Ridge Knife Company

3348 Highway 101 N.

To kick off summer, Cougar Ridge will feature 20 percent off wine and enjoy \$1 off any coffee drink from 2 to 5 p.m. by mentioning Artwalk. Stop and see the latest knives that are out with other vintage items. It's the ultimate man cave.

### Gearhart Ironwerks

1368 Pacific Way

Are you ready to make some-

thing of those indoor or outdoor custom ideas that have been tucked away for months and years? Let John Emmerling help you bring those ideas to life in "Ironwerks." Stop by, take a look and talk about how Ironwerks can create for you at the June ArtWalk.

### Natural Nook

738 Pacific Way

The Natural Nook should be your resource for everything new and different in your garden.

### Pacific Crest Cottage

726 Pacific Way

We are ready for June ArtWalk with décor from artists in many different styles and trends. The Cottage always shares a featured artist with customers at ArtWalk.

### Romancing the Home

3350 Highway 101 N.

Summer is alive and on display with a selection of artists during the June Gearhart Artwalk. Experience works from the featured artist of the month.

### Trails End Art Association

656 A St.

Kitty Paino is the featured artist.

See related article.



Submitted photo

"Misty Morning" by Susan Thomas is on display at A Great Gallery.

## 'The Journey is the Reward' opens at Trails End Saturday

### Kitty Paino uses paper for creations

GEARHART — Kitty Paino is the featured artist for June at Trails End Art Gallery, 656 A St. The show, "The Journey is the Reward," includes her most recent work in acrylic, mixed media and collage, using paper in organic way with subjects from nature.

The opening reception is from 2 to 5 p.m. Saturday, May 6 during the Gearhart Art Walk. Along with other members' work, the show will be open through the month of June.

Paino grew up in Seaside and lives in Astoria. She was influenced by local artists and teachers like Sally Steidel and Lynda Campbell,

and most recently the paper art of Linda Rothchild Ollis from Scapoose, and California artist Gerald Brommer. She holds an undergraduate degree in art education and graduate degrees in art education, and another in curriculum and instruction/community education. Paino taught ceramics, weaving, spinning and dyeing, drawing, metal smithing/jewelry and stained glass in her first years out of college. However, as with many people, life shifted away from art for many years due to life circumstances.

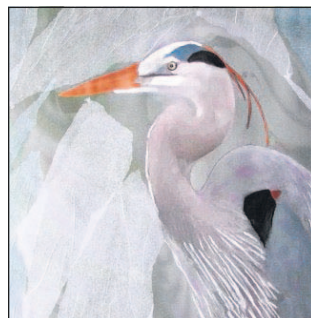
When she retired, as dean of Continuing Educa-



Submitted photo

"Tortured Migration," a collage and acrylic painting by Kitty Paino.

tion from Clatsop Community College, a friend, after seeing some of her earlier work, convinced her to try painting again. In the same gentle nudge to find a different kind of creativity, she was convinced to join Trail's End Art Association in Gearhart and with the encouragement of members there began painting in earnest. Currently, she works primarily in acrylics and handmade papers – but will use any medium necessary once she decides what she



Submitted photo

"Great Blue," a collage and acrylic painting by Kitty Paino.

wants to create.

In the last 10 years, she has received Best of Show awards and also People's Choice awards twice at Trail's End's annual juried show; and an honorable mention at the international Au Natural competition among several other awards including her work at the permanent display of Oregon Coast artists at the Oregon Coast Arts Commission

Visual Arts Center Showcase in Newport.

Paino answered some questions regarding her art.

### What or who most inspired you to be an artist?

I think for a lot of us, things like art and music pick us rather than the other way around. I always wanted to do art, and most children yearn to do it as well. Unfortunately it is often discouraged rather than nourished. But my mother took me to a Trail's End Art Center children's class when I was 10 years old, and around the same time, a friend of the family gave me a wooden box filled with oil paint to stop me from stealing my aunt's begonias to crush and make watercolors.

### What medium do you prefer and why?

I like to work with acryl-

ics when doing realism. But right now I am fascinated with creating a palette of colors on different papers, and then painting with those papers along with acrylics on canvas or paper. If I pay attention to the journey that design can take me, it takes a chaos of a flurry of papers, and makes it into patterns that are more about the natural world than the nonorganic world. It is about that journey more than the result that has personal meaning.

### What do you like best about your work?

The process is what I like best. It's why I think of it as a journey. I love being in a state where coffee gets cold and I forget to do the dishes. It's a nice place to go, but it is also gratifying and energizing when someone else likes what I'm doing, too.