

CAMP KID SCOOP

BUG-A-PALOOZA

www.kidscoop.com

Find Kid Scoop on Facebook

© 2015 by Vicki Whiting, Editor Jeff Schinkel, Graphics Vol. 31, No. 25

Beauty in Flight

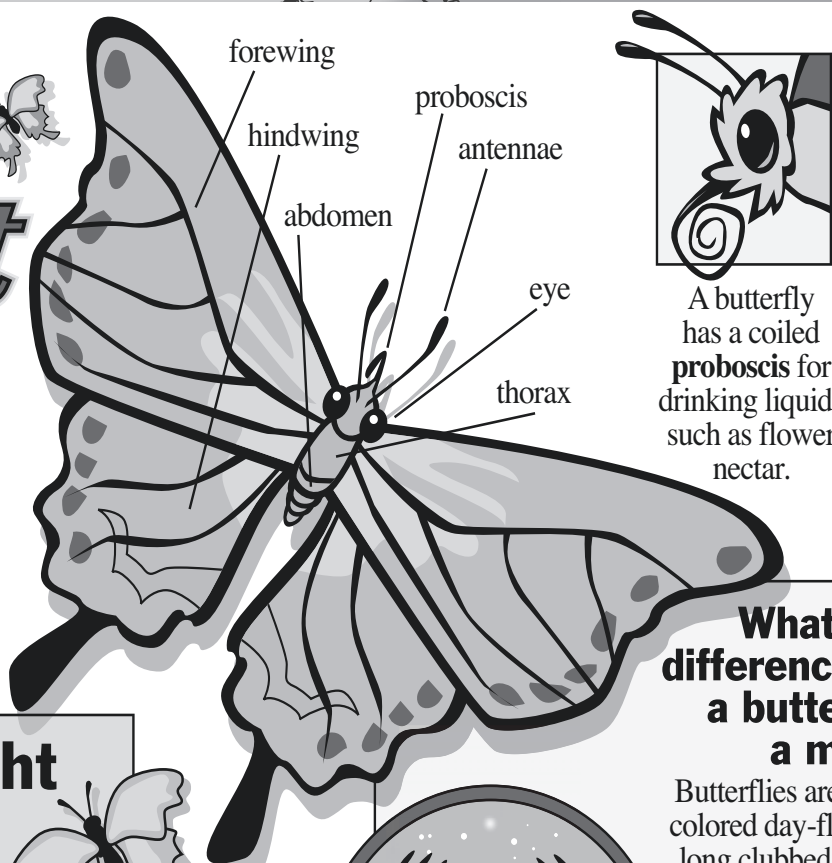
It's a flower! It's a bird! It's a butterfly!



Butterflies may look like flying flowers but they are living insects.

Like all insects, a butterfly has a head, thorax, abdomen, two antennae and six legs.

Standards Link: Life Science: Students know that organisms have distinct structures that serve specific functions in survival.



A butterfly has a coiled proboscis for drinking liquids such as flower nectar.

Butterfly wings are covered with colored scales.

What is the difference between a butterfly and a moth?

Butterflies are mostly brightly colored day-flying insects with long clubbed antennae, while moths fly at night and lack clubs at the end of their antennae. Some moths have antennae that look almost like feathers.

A World of Delight

Scientists estimate there are some 12,000 – 15,000 species of butterflies.

Butterflies can be found on all continents except one. Write the letter that comes before each letter to find that continent.

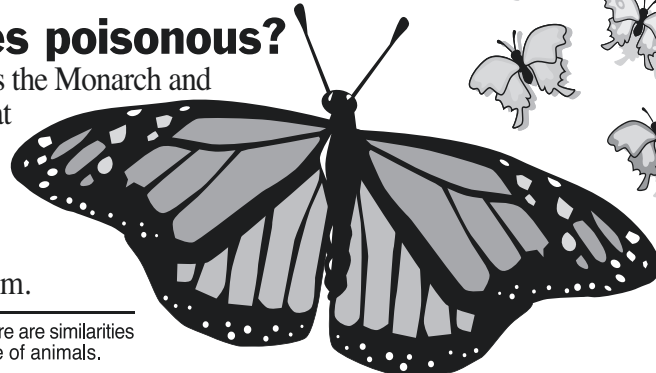
A _ B _ O _ U _ B _ S _ D _ U _ J _ D _ B _

Standards Link: Reading Comprehension: Follow simple written directions.

Are butterflies poisonous?

Some butterflies, such as the Monarch and Pipevine Swallowtail, eat poisonous plants as caterpillars and are poisonous themselves as adult butterflies. Birds learn not to eat them.

Standards Link: Life Science: There are similarities and differences in the appearance of animals.



Not So Fast

A butterfly can fly at a top speed of $6 + 3 + 5 - 2$ miles per hour.

Standards Link: Math/Number Sense: Calculate sums to 20.

Mimics

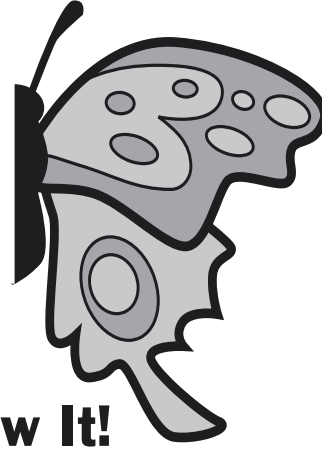
Some good-tasting butterflies are disguised to look like poisonous ones causing birds to stay away from them as well.

Look closely at these butterflies to find the one that is different.

Standards Link: Life Science: Understand relationships among organisms and their physical environment; know the organization of simple food chains and food webs.

Draw It!

Draw the other half of this butterfly.



Extra! Extra!

More Than One

One butterfly is spelled b-u-t-t-e-r-f-l-y. More than one is spelled b-u-t-t-e-r-f-l-i-e-s. To make butterfly plural, you change the y to i and add -es.

Look through the newspaper for five nouns that end in y. Change each from singular to plural. Then, look for five plural nouns, and change them to singular nouns.

Standards Link: Spelling: Use the conventions of spelling.

Kid Scoop Puzzler

With the help of her grandfather, a little girl makes a house for a larva and watches it develop before setting it free. Every summer after that, butterflies come to visit her.

Unscramble the title of this book. Then, check it out at your local library this summer!



- Bert Bookworm

Catch the reading bug at your library this summer!

Standards Link: Reading Comprehension: Follow simple written directions.

Double Double Word Search

- BUTTERFLY
- INSECTS
- MOTHS
- BIRDS
- ABDOMEN
- LARVA
- COILED
- SCALES
- PIPEVINE
- CLUBS
- NECTAR
- ADULT
- BUG
- SPEED
- NIGHT

Find the words in the puzzle, then in this week's Kid Scoop stories and activities.

| | | | | | | | | | |
|---|---|---|---|---|---|---|---|---|---|
| N | B | D | U | S | S | D | R | I | B |
| E | N | E | G | B | T | H | T | U | T |
| C | E | E | U | R | H | T | C | F | |
| T | M | P | L | L | B | T | G | O | Y |
| A | O | S | T | C | E | S | N | I | M |
| R | D | L | A | R | V | A | B | L | N |
| E | B | A | F | S | C | A | L | E | S |
| U | A | L | T | Y | T | L | U | D | A |
| O | Y | E | N | I | V | E | P | I | P |

Standards Link: Letter sequencing. Recognized identical words. Skim and scan reading. Recall spelling patterns.

EMERALD HEIGHTS APARTMENTS
Affordable Place to Call Home
Astoria, OR Call 325-8221 for more information

Astoria Forest Products, LLC
10 Pier 1 • Suite 301
Astoria, Oregon 97103

KOA Astoria, Warrenton, & Seaside
1100 Northwest Ridge Road
Hammond OR 97121
reservations 800-562-8506
info 503-861-2606

Northwest West Inc. Income Tax Preparation
762 Avenue G, Seaside, OR 97138
503-738-3480

Tires LES SCHWAB WARRENTON 861-3252
1167 S.E. MARLIN SEASIDE 738-9243
MCCALL TIRE CENTER 2155 S ROOSEVELT

Heather's COUNTRY HAVEN AFHS
503-325-2438
87943 Highway 202, Astoria, OR 97103

MOBERG & RUST ATTORNEYS AT LAW
842 BROADWAY STREET SEASIDE, OR 97138 (503) 738-6380

LOWER COLUMBIA CLINIC
FAMILY PRACTICE
Thomas S. Duncan, MD
Susan L. Skinner, CNM, CFNP
595 18th, Astoria • 325-9131
Emergency Office Hours: 503-861-5515

MARTIN L ALVEY P.C.
Astoria office • 10 Pier One, Ste 303
Astoria, OR 97103
Phone: 503-325-5509 • Toll Free: 866-509-3516

Home Furnishings
1033 Commercial Street
Astoria, Oregon 97103
(503)325-5620

Morgan Civil Engineering
PO Box 358 • Manzanita
503-368-6186

MARITIME TEXACO
1701 Marine Dr
Astoria, OR 97103
1-503-325-7812

10 Pier 1 Ste. 308 | Astoria
503-741-3300
PORT OF ASTORIA

Classic BODYWORKS
503.325.0411
34747 Hwy 101 Bus.
Astoria
AND TOWING

LEWIS & CLARK OREGON TIMBER, LLC
Managed by the Campbell Group, LLC

RE/MAX River & Sea

TERRY'S PLUMBING
(503) 325-5180
2095 Marine Drive | Astoria

Pacific Sleep Program
Portland & Astoria | Setting the standard in sleep medicine for over 30 years
2120 Exchange St | Suite 302 | Astoria
503.325.3126

Teerin Bros. LAND & TIMBER CO.
ASTORIA | 503-556-0410

at The Hallmark Resort
1400 S Hemlock,
Cannon Beach, OR
503-436-0366

COLUMBIA RIVER BAR PILOTS
Providing safe passage since 1846

CLATSOP POWER EQUIPMENT INC.
34912 HWY. 101 BUSINESS
ASTORIA | (503) 325-0792

AstoriaPointe
263 W Exchange • Astoria | (877) 435-7790

Rosebriar
at Astoria Pointe

NEWSPAPER CARRIERS NEEDED The Daily Astorian has several routes available in the Astoria area. Call 503-325-3211 for more information.

Thanks to the following businesses for supporting Newspapers In Education
www.dailyastorian.com/site/newspapers_in_education/

- Appelo Archives Center
- Sam's Seaside Café
- Hees Enterprises, Inc
- Quackenbush Builders Inc.
- Bridgewater Bistro
- Clatsop Truck & Equipment
- Clatsop Behavioral Healthcare

- Le's Income Tax
- Kuuma Saavi Works
- Bergerson Construction
- Diane Barendse, CPA
- Lazerquick Seaside/Astoria
- Mark J. Lang, Attorney at Law
- Premium Adjustable Beds

- Suzanne Elise Assisted Living
- Solum Roofing & Gutters
- Astoria Marine Construction
- Jonathon's LTD
- Seaside Oregon Visitors Bureau

Great Ocean
Da Yang Seafoods LTD.
DA YANG

Rosebriar
at Astoria Pointe