

Trail's End opens 'Coastal Art for All Seasons' May 2

GEARHART — Gheri Fours is the featured artist for May at Trail's End Art Gallery. The show, titled "Coastal Art for All Seasons," will include her works in watercolor, mixed-media and collage. The opening reception will be held from 2 to 5 p.m. Saturday, May 2 during Gearhart's First Saturday ArtWalk.

Along with other members' work, the show will be open through the month of May. The public is welcome to browse the gallery and gift shop featuring an all new monthly exhibit of oil paintings, watercolors, acrylics, photography, collage, cards and gifts. The gallery and gift shop is open 11 a.m. to 3 p.m. Wednesdays through Sundays. The gallery is located at 656 A St. Visit the Trail's End web-

site at <http://trailsendart.org> for more information about the organization, and find out about the events TEAA has planned for the summer.

Come visit on May 2 and ask Fours any questions you might have about how she develops her art.

Born and raised in Chicago, Fours has lived in Canada and Hawaii and is now retired on the Oregon Coast. "In the '50s and '60s, my sister and I used to go to the Art Institute in Chicago once a month to see the change in exhibits and watch the new trends," Fours recalls. "When we went to the university, she majored in art, and I majored in chemistry. When I retired she bought me a paint brush and encouraged me to paint."

Fours answered some questions about her art.



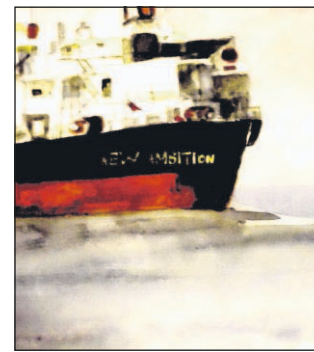
Submitted photo

"Study in Red," a mixed-media piece by Gheri Fouts.

What Medium do you prefer?

The medium I prefer is watercolor. I am happy with the challenge. Watercolor presents obstacles every time I paint. It is loose, it travels on the paper, it mingles and mixes well with colors or rejects

them. Oftentimes it is out of control half way through the process. It teaches me to be patient and contend with fleeting moments of chaos. Each painting



Submitted photo

"New Ambition," a watercolor by Gheri Fouts.

becomes a learning experience.

Where do you get your inspiration?

When I am painting, I ask the question "Do you see what I see?" This question becomes my inspiration for my work. It could be a crowded street in Seaside, a pilot boat chasing a ship in a storm,

a quiet landscape, or just a capture of melancholy on a toned paper.

Where do you paint?

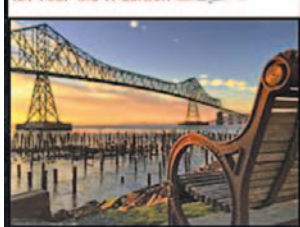
I have a studio, but drawing and painting outside is alluring to me despite the oftentimes wet weather. I carry a small sketchbook that gives me comfort just knowing I can draw at anytime. Spontaneity is often the preface to many deliberate paintings that I finish in my studio.

Do you have other hobbies or interests?

In my other life outside of painting, I work with wool: spinning, knitting and weaving. It is working with my hands in another way. There is a certain element of history and utility in working fiber from the very beginning of its origin to a finished product. Fiber arts inspires my creativity.



astoriaregatta.com
121 Year Old Tradition



2015
ASTORIA REGATTA
Rockin' on the River!

Save The Date!
AUGUST 5TH - 9TH, 2015



Casual Fine Dining
LUNCH & DINNER
Seafood • Steaks • Pastas
Salads • Chowder

**Bring this ad in to receive
10% OFF
FOOD PURCHASES**
(does not include beverages)

**SILVER SALMON
GRILLE**
DOWNTOWN ASTORIA
1105 COMMERCIAL ST. ASTORIA
503.338.6640

BANQUETS • CATERING
OREGON LOTTERY

2008
"GOLDEN FORK AWARD"
Gerry Frank, The Oregonian

Reservations Accepted
Visa • Mastercard
American Express • Diners Club

Find Us On Facebook!
www.silversalmongrille.com

tjs
AUTO REPAIR

"Where Quality Counts"
1085 Alt. Hwy 101, Warrenton
OPEN MON-FRI 8-5
503-861-AUTO
www.tjsautorepair.com

6 Months Same As Cash O.A.C.

25 Years Same Location • Family Owned/Operated • 63 Years Experience

- AIR CONDITIONING
- ENGINE DIAGNOSTICS
- ELECTRICAL
- DIFFERENTIAL OVERHAUL
- ALIGNMENTS
- MOTOR HOMES
- ENGINE DIAGNOSTICS
- CLUTCHES • BRAKES
- ENGINE/TRANSMISSION

Welcome to the 33rd Annual
Crab, Seafood, & Wine Festival

**Del's OK
TIRE FACTORY**

35359 Hwy. 101 Business • (503) 325-2861 • tirefactory.com/astoria
For Emergencies: 503-325-0233