

1250 Cattle-Beef

(1) Registered Black Angus Bull: AI stock, 18 months old, semen tested and vaccinated, \$2450. Beaver-creek, OR. 503-313-4158

(30) Yearling and 2 Year Old Bulls: Noah's Angus Ranch, Angus Cattle Since 1955. Cambridge, ID. 208-257-3686, www.noahsangusranch.com

(4) Young, Nice, Whiteface Calves: 10 to 12 months. Salem, OR. 503-508-0601

(75) Corriente Cows: fall calving, mixed ages, bred to Charolais bulls, calving Aug 20th to Nov 10th, \$900 OBO. Prineville, OR. 541-771-0586

(80) Head of Registered Heifers: Noah's Angus Ranch, Angus cattle since 1955. Cambridge, ID. 208-257-3686, www.noahsangusranch.com

(80) Salers Bulls: All ages from yearlings to 2 year olds. Red and Black calving ease polled bulls developed on our eastern Oregon ranch for 36 years. Quiet temperament, delivery available. Flying T Ranch Sprague River, OR. 541-533-2416, cattle@flyingtsalers.com

1 to 100 Spring Calved Registered Angus Pairs: starting at \$1650/ pair. Noah's Angus Ranch, Angus Cattle Since 1955. Cambridge, ID. 208-257-3686, www.noahsangusranch.com

1-800-238-2934 Yearling Black Angus Bulls: Upward, Aberdeen, Final Answer genetics. Semen tested, virgin, delivery available, starting at \$2500. Rolfe Angus Acres, Grass Valley, OR.

2 Ropers: 1 heifer, 1 steer, good horns, \$600 OBO. Prineville, OR. 541-771-0586

6 Fresh Corriente Ropers: \$600 each. Ready to rope. Lebanon, OR. 541-401-2350, 541-409-4743

Angus/ Limousin Cross Bulls: easy calving, fast gain. Elgin, OR. 541-437-8181

BLACK ANGUS BULLS: Quality, Purebred, 2 years, gentle disposition, best of care, delivery available. Eugene, OR. 541-484-9054

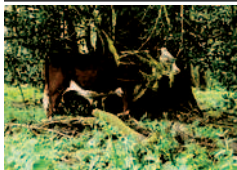
Black Angus Seedstock: Excellent Genetics: Pairs with February calves, \$1500. Replacement heifers, 16 months, \$1200. Roseburg, OR. 541-825-3352

Breeding Age Virgin Registered Red Angus Bull: halter broke and gentle, Division Champion Red Western Classic Show. Sire Firestorm, Dam Pie Code Red daughter, \$3500. Canby, OR. 503-484-5960

Bulls / Polled Herefords: 18-24 months, price from \$1,500 to \$2,000 all shots. Portland, OR. 503-789-1531

FAT CATTLE: ONLY 3 LEFT Angus, Angus/ Hereford cross 2 year old fat cattle. No Hormones, \$1.25/pound OBO, FOB. Gaylord, OR. 541-953-2405

Five Year Old Polled Hereford Bull: proven, \$1100. Eleven month old polled Hereford bull calf, \$700. Jefferson, OR. 541-981-0202



Hereford Bull: purebred, 2 years old, 900- 1000 pounds, \$1500. Harvey Koski, Dora, OR. 541-290-9482

1250 Cattle-Beef



Mastel Family Murray Greys: Grass fed, cows, heifers and bulls. Roseburg, OR. 541-679-0677

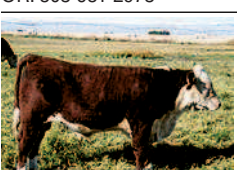


Model 125 Hesston Manure Spreader: in excellent shape, \$6,300 or partial trade for beef cattle. Silverton, OR. 503-932-2037

Moderate Frame • Calm Disposition • Maternal Qualities • Balanced Traits. SE Oregon born and raised, reasonably priced. Murray Grey bulls are ready to improve your herd in so many ways! Princeton, OR. 541-493-2076, suemrainsay@aol.com

Opportunity to Own Excellent Quality Polled Hereford Cow/ Calf Pairs: cows AI'd to top Nation bull. Bred heifers, bulls. All gentle. Cox Herefords, Jefferson, OR. 541-327-2458

POLLED HEREFORD BULL: 3 years old, gentle, halter broke, great pedigree. Calves are moderate birth weight and fast growing, \$2500. Give us a call. Hanan Family Farm, Molalla, OR. 503-651-2973



Polled Hereford Bulls: 14 months old, easy calving bloodlines, very gentle, \$1800. Possible delivery. Quincy, WA. 509-785-6291

Polled Hereford Bulls: Top Quality, lots of muscle and testicle, halter broke, ready for work. Also cow calf pairs. Can deliver. Vollstedt Farms, Albany, OR. 541-926-5640, 541-990-8038

Registered Black Angus Bulls: Approximately 18 months. Low birth weights, great dispositions. Reedsport, OR. 541-271-4940.

Registered Polled Hereford Cows: ready for breeding, excellent bloodlines, gentle, halter trained. Cow, 5 years, \$1400. Heifer, 23 months, \$1200. Oldtown, ID. 208-920-3202

Shorthorn Bulls: March-April Yearlings, Selected for length, width, depth and muscling. Mothers sound, thick, calm, good milk. Good carcass data. Coulee-City, WA. Call 509-632-8709, 509-683-3272

Washington State University has 3 registered Angus bulls for sale, \$2500 each: See bulls, more details and contact info at www.ansci.wsu.edu/cattle-for-sale, or contact Brent at 509-335-3777.

Looking for CATTLE RANCHES?
Go to Class. 356
Capital Press
www.capitalpress.com
1250-152-4/#13

1250 Cattle-Beef

Purebred Charolais Long Yearling Bulls: Brownsville, OR. 541-466-3377 or 541-466-3187

USDA Certified Organic: feeder cattle for sale. Oregon 541-846-7175

Yearling Black Sim-Angus: Bulls for Sale. Yearling weights 1100 lbs. No grain, just grass and hay, docile, easy calving. Elkflat Cattle Company, Caldwell, ID. 208-454-3790.

YEARLING LIMOUSIN BULLS

Purebred, Registered, Genomic EPDS, \$2000. Mesa, WA. Kaleb 509-528-7353, www.whitbybroscattleco.com

1280 Livestock Equipment

(2) Square Bale Feeder: for sheep, goats, calves, 3x4 bales, covered, self feeder, saves hay, \$250/ each. Burns, OR. 541-589-1363

Livestock Panels: 16' (6) rail, (3) brace, \$116 each, 12 panels, (6) rail, (2) brace, \$93. Bow gates, all lengths and sizes. These panels are new Green color, hundreds available. Heavy 16' Feeder Panels, \$300 each. La Grande, OR. 541-805-9279, 541-963-6258

Powder River Portable Loading Chute: like new, \$2600. Yakima, WA. 509-961-5542

Priefert Model 91 Head Catch, \$500. Powder River, squeeze chute, old but working good, \$500. Ilwaco, WA. 503-791-7116

Sheep Camp: excellent condition, all the bells and whistles: hydraulic brakes all 4 wheels, rubber tires, propane stove with oven, running water, led lights, 12v battery, solar charger, pull with team or 3 across, many other additions, 2400 pounds dry, \$8000. Caldwell, ID. 208-453-2601

Priefert Authorized Dealer
BISON PIPE & SUPPLY
800.764.7473

1310 Dairy Eq. & Supplies

Complete Double 8 Parallel Parlor: all machines and pulsators, 2000 gallon dairy cool milk tank with chiller, variable speed vacuum pump and milk pump All stainless pipeline. Great condition, \$10,000 for all. Vancouver, WA. 360-904-8509

D-H Separator De-watering Machine: stainless steel with roller, stands and catwalk, \$10,500. Amboy, WA. 360-606-6348

Double Manual Bottler: with capper, type B40 of serial 3633, \$1500 OBO. Green Steam Kettle, model E30200L, \$450. Toledo, WA. 360-703-4510

Kiln Dried Shavings: truck-load/ minimum 18 unit load, Forest Grove, OR. 503-849-0216

Polydome Calf Nursery: Hutches available for various climates. Western Polydome, Inc. Monroe, WA. 800-822-5837

SIGN UP TODAY FOR FREE WEEKLY DAIRY E-NEWSLETTER: access.capitalpress.com/newsletter.php

NEW MANURE SPREADER
400 bu. • BUY OR RENT Call Scott at Barr-Tech Compost/Organics Recycling
509-590-0437
www.Barr-Tech.net
Sprague, WA

1320 Tanks & Storage

(1) 1000 Gallon Stainless Steel Tank: open top with covers, \$2000. (2) 1500 gallon stainless steel milk tanks, \$4500 each. (1) 13,000 gallon stainless steel vertical tank with mild steel shell, \$15,000. Boardman, OR. 541-314-8568



1973 Peerless Tanker: Aluminum, 2 compartments, 2600 gallons, PT Leasing DBA Pro Truck and Equipment, Portland, OR. \$2950. 503-816-4390.

5000 Gallon DW Tank. 5000 Gallon DW 2 compartment tank (2500/2500). 4000 Gallon DW tank. Salem, OR. 503-881-9803

Diesel Fuel Tanks: 10,000 and 4,000 gallons, molasses tank and miscellaneous tanks. Sublimity, OR. 503-769-6681



Feed Storage Tank: (1) 8 ton, great condition, galvanized, ladder, \$1180 OBO. Yelm, WA. 253-377-3674

1380 Irrigation Equipment

Your Leading Source for Irrigation Supplies
H₂O Pipe & Supply
• Drip Irrigation • Filtration • Design
598 Baseline, Cornelius, OR 97113
Phone (503) 357-4217
www.hspipe.com
rickw@hspipe.com

1330 Generators



GENERATORS: Low hour takeouts, 20kW to 2000kW, diesel, propane, & natural gas. Cooperstown, ND. We ship nationwide. 701-371-9526 or 701-367-4305. www.abrahamindustrial.com

1380 Irrigation Equipment

(2) Wheel lines: 4" Western, 7" wheels, 26 sections per wheel line, hydraulic movers, \$1,800/ line. Eltopia, WA. 509-727-5073, nathan@victoryagllc.com

(6) ¼ Mile Wheel Lines: western style pipe with levers. Also 5000' of 6" and 8" ring lock mainline for 60 foot sets. Otis-Orchards, WA. 509-924-9365

(75) Used Pivots: Engines, pumps. Garden Valley, ID. Call Mike at 208-420-1480, or see www.pivotsplus.com

1998 Ernst Irrigation Model 90: Hard hose traveler with Nelson 150 sprinkler head, 1100' of 3" hose, \$11,000. Amity, OR. 503-437-1031

2" Irrigation Pipes: (17) pipes 40' long, (3) pipes 20' long, (1) 16', \$700. Silverton, OR. 503-873-4471

2", 3" and 4" Sprinkler Pipe: 30' and 40' lengths. 5000 in stock. Located in California. We Buy and Sell Irrigation Equipment. Call 559-779-4798 or 806-637-9523



40 HP Vertical Irrigation Pump: no bores, 3 phase, 460V, 52AMP, with control panel, \$2500. Trout Lake, WA. 360-901-3804

6", 8" and 10" Mainline: 4" and 5" reconitioned side rolls. 30 available. Located in California. We Buy and Sell Irrigation Equipment. Call 559-779-4798 or 806-637-9523

CENTER PIVOTS: (2) full length brand new pivots, 14.9X24 pivot tires, drops and sprinklers included, extra heavy duty, 4X4 legs, extra bracing on towers and pivot points, \$30,000 each. 775-217-0438 or jeanilcrowe@gmail.com

Diesel Irrigation Pump ● 400gpm at 140psi ● Kohler 4 cylinder: 78hp ● 125 gallon fuel tank ● Suction crane ● Engine/pump panel: \$ 22,900
www.idrofogliusa.com
360-393-4923



Evergreen Hose Reel: 1,600', 4.6" hose, power turn table, has computer, hydraulic anchors, Isuzu booster pump, 3 axle \$40,000. Brooks, OR. 503-580-4261

HDPE Plastic Pipe: 8", 12", 21" available. Call for prices. Cornelius, OR. Jeff 503-341-4289

Irrigation Pump: 60 hp, Cornell, model 6YRB, great shape, \$4000. Clatskanie, OR. 503-369-4353

Irrigation Travelers ● Idrofoglia Reels Made in Italy ● Wide Selection of Sizes ● Stocked in Lynden, WA
Special Prices: 3.7" x 1320' with Gun: \$31,600 3" x 985' with Gun: \$17,900 2" x 650' with Gun: \$9600
www.idrofogliusa.com
360-393-4923

K-LINE: 50 pods of K-Line, complete set-up, \$135 per pod unit. 3 big gun sprinklers, \$135 per unit. 3 wheel lines, complete, \$1600 per unit. Prescott WA 509-749-2361

¼ mile Wade Rain Wheel line: \$6500. Amity, OR. 503-437-1031

Pivots: all brands, various lengths, good & late models. No rust. Plus some pivot parts, and buried wire. Call Keizer, OR. 503-881-3232, 503-390-3210

Portable Aluminum Irrigation Main Line: 40 foot sections- (40 pieces) 6 inch clamp style, (30 pieces) 5 inch western latch style, (12 pieces) 4 inch western latch style, \$2.25 per foot. Eltopia, WA. 509-727-5073 nathan@victoryagllc.com

Selling All Ranch Irrigation Equipment: Miscellaneous sizes of gated pipe, aluminum hand lines, main lines and Wade wheel lines. All currently in use. Redmond, OR. 541-480-2471

Several Used Wheel Lines: 7" wheels, spline and wade connections, some head levers. Connell, WA. 509-707-3377

Sold Nursery 125 acres solid set: 30"x2" pipe with spike couplers, 24" risers with 2.5 GPM Nelson Rotators. 1 to 100 pipes, \$25 each. Over 100, \$20 each. Sublimity, OR. 503-769-7127

1380 Irrigation Equipment

Used Aluminum Mainline: 6", 8" and 10", 10,000 feet available. Call for prices and details. Bonanza, OR. 541-810-8280



Wacker: 6" trash or irrigation pump, diesel, 400 actual hours. On trailer. Very good condition, \$7900. Twin Falls, ID. 208-934-6533

Wanted: vertical lift single stage propeller pump, 16 to 24" diameter, 10 to 15' long. 208-267-5297, 208-267-7414

High Quality Brass Vyrsa Impact Sprinklers
½" Part Circle \$15.12
½" Full Circle \$11.70
¾" Part Circle \$24.38
¾" Full Circle \$13.89
Call For Bulk Pricing and FREE Brochure!
WaterTec
(360) 393-4923
www.watertecna.com
Lynden, WA
25-3#11D

IRRIGATION EQUIPMENT BOUGHT. SOLD. RENTAL.
Design of Effluent Handling Systems - Gates, Valves & Aerators
New & Used Parts.
• Aluminum Pipe
• Certalok
• Siphon Tubes • HDPE
• Sand Media Filters
• Wheel Lines • Pumps
PACIFIC NORTHWEST IRRIGATION
Office: (209) 460-0450
Fax: (209) 982-1832
www.pacsouthwestirrig.com
Carlos (209) 481-7677
Jim (209) 986-0099
1380-23-4-2/#18



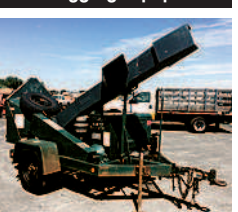
1470 Heavy & Indust. Equip.

Packing line for sale: 4 lane PSI color sorter/ sizer. OMS camera system, 22 drops with tray feeders, 16 bagging drops, recently upgraded chain and solenoid exit ramps, all cross belts included, plus nice 14x4 hydraulic sorting table. SW, ID. 208-250-4279



Rainier Cherry/ Fruit Packing Line: all stainless steel, has a variety of uses, \$30,000 OBO. The Dalles, OR. 541-980-4594

1410 Logging Equipment



1997 Woodchuck Chipper: 12" drum, gas, exceptionally clean, one owner, low hours, \$7500. Twin Falls, ID. 208-934-6533

1380 Irrigation Equipment

1410 Logging Equipment

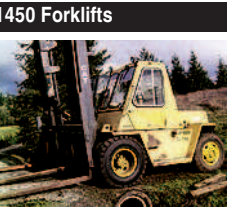


1994 D5H TSK: Fixed grapple with winch, excellent undercarriage, 10' six way blade, \$75,000. Monroe, OR. 541-424-2033

Older Machinery: Chippers, Vans, debarker, new rock blade, John Day, OR. 541-575-1525

1440 Sawmill Equipment

CASH FOR SAWMILLS: We buy Wood-Mizer, Mobile Dimension, Mighty Mite, and more. Portland, OR. Call 971-271-8070.

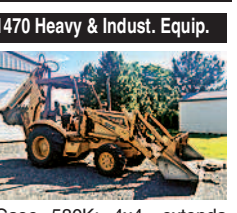


CAT Forklift V180B: 212" up right, slide shift 2- stage mast, good rubber, 3208 CAT diesel, 3 speed automatic, good brakes and emergency brake, runs out good, 8' forks, full cab, hydraulic fork positioners, would make great hay squeeze, \$18,500. Gaston, OR. 503-789-3726

Gnuse F-40: 3 point/ hydraulic fork lift, 4000 lb. capacity, never used, \$1250. Long Creek, OR. 541-421-5300

Yale 1997 Electric Forklift: 3000 lb. with charger, \$9500. Hubbard, OR. 503-981-3557, 503-981-7517

Used Lift Trucks
Also New & Used Parts
All sizes, makes & prices
LIFT TRUCK SERVICE
888-890-1450
forkliftsales.com
Ellensburg, WA
1380-23-4-2/#18



Case 580K: 4x4, extendable, 2370 hours, 4 buckets, great shape, \$25,000. The Dalles, OR. 541-980-2115



631D and 633 Cat Scrapers: (3) available, \$28,000 each. Ontario, OR. Call Dale 541-212-6159

1470 Heavy & Indust. Equip.

1995 John Deere 310D Backhoe: 2WD, 4300 hours, runs and works well, \$14,000. Call 208-983-8100

CAT 613-B: Self-loading scraper, good condition, \$29,500. D-6 H U-dozer with tilt and ripper, near new engine and hydraulic pump, \$86,500. Kenworth water truck, 3800 gallon, commercially built, many new repairs, \$39,500. Salem, OR. 503-362-3055

CAT D-8 46A AND CAT 80 SCRAPER

D-8 runs good, in fair condition. Scraper is in good condition, 22 yard capacity. Asking \$6000 for the D-8 and \$6000 for the scraper, or \$10,000 for the pair. Monmouth, OR. 503-932-4979

Diesel Engines For Sale: came from hyster lift trucks. Yanmar, 3.3L, 2012, less than 100 hours, \$1950. Kubota V3600-T, 2011, tier 3 with SAE3 housing, approximately 2000 hours, \$1850. Kubota 3.8L engines, low hours, no engine control unit- use as parts. Oregon City, OR. 503-631-8487

Mitsubishi BD2G Dozer: fresh off the job, only 500 hours, 6 way blade, job ready, \$14,500. McMinnville, OR. 503-550-7625

Mitsubishi WS-300 Loader: 9' 6" reach, diesel, power shift, fresh off the job, ready to work, \$12,500. McMinnville, OR. 503-550-7625

503-668-5024 • 503-407-9062

"We Buy Equipment"

HEAVY & INDUSTRIAL EQUIPMENT

Komatsu 220-6 Excavator Dig and Clean up buckets. Asking \$29,500

Case 570 XLT Skidloader 4X4 Box Scraper, Asking \$16,500

Case 530 Wheel Tractor Rear PTO, Front Broom, Forward reverse angle, Runs Excellent \$6,500

300-1 Komatsu Wheel Loader rebuilt eng. oversized bucket, clean unit \$28,500

CAT CL Thumb, 2 Buckets, Hyd. Quick Change \$44,950

Case 95XT Skidsteer Extra pump for mower or grinder, no-puncture tires. \$10,500

Kobelco SK220 LC thumb, dig bucket \$22,500

Case 580K Backhoe 4x4 4in1 extendahoe, enclosed cab \$19,500

buzzardequipment.net
25-4/#8

RIVERBROOK FARM • HAULING SERVICE
Brooks, OR

WE HAUL!

- Building Supplies • Farm Equipment
- Construction Equipment • Heavy Equipment
- Granular Fertilizer • Grain/Wheat

888-393-1819 • www.riverbrooktrucking.com
25-11#7

MARKET SCHEDULE

- June 24: Livestock Sale
- July 1: Closed for 4th of July
- July 8: Livestock Sale
- July 9: Monthly Horse Sale

Monthly Market Report for 6/17/2017
Total Head Count: 392
Top cows high dressers: \$60.00-\$70.50
Top cows avg.: \$64.20
Top bulls high dressers: \$80.00-\$98.50

Choice Steers:	Choice Heifers:
med. to lrg frame #1 & #2's	med. to lrg frame #1 & #2's
300-400 lbs \$125.00-\$152.50	300-400 lbs \$110.00-\$130.00
400-500 lbs \$115.00-\$137.50	400-500 lbs \$115.00-\$134.00
500-600 lbs \$130.00-\$138.50	500-600 lbs \$120.00-\$133.00
600-700 lbs \$114.00-\$133.00	600-700 lbs \$115.00-\$130.00
700-800 lbs \$110.00-\$134.50	700-800 lbs \$115.00-\$122.00
800-900 lbs \$113.00-\$128.00	800 & up No Test

EUG